

Progress Report for March 2013

MERCED - FRESNO SUBSECTION

AECOM Transportation ♦ CH2M HILL

Tasks 1 – 8 Progress Report

Environmental Milestone Schedule

| Section/Activity | Plan Actual/Forecast % complete | Scoping Report | Board Briefing to Approve Release of the AA Report | Release Preliminary AA Report | Board Briefing to Approve Supplemental AA Report | Release Supplemental AA Report | Technical Reports | Admin Draft EIR/EIS | 15% Design | Draft EIR/EIS | Final EIR/EIS | NOD/ROD | Percent Complete Toward NOD/ROD |
|------------------|---------------------------------|----------------|--|-------------------------------|--|--------------------------------|-------------------|---------------------|------------|---------------|---------------|-----------|---------------------------------|
| Merced - Fresno | Plan | Mar. '10 | Apr. 8, 2010 | Apr. '10 | Jun. 3, 2010 | June '10 | Aug. '10 | Aug. '10 | Sept. '10 | Mar. '11 | Feb. '11 | April '12 | |
| 65 miles | Actual/Forecast | Mar. 10 A | Apr. 8, 2010 | Apr. '10 A | Aug. 5, 2010 | Aug. '10 | Dec '10 | Sept. '10 | Aug '11 | Aug '11 | May '12 | Sept '12 | |
| | % Complete | 100% | 100% | 100% | 100% | 100% | 100% | 100% | 100% | 100% | 100% | 100% | 100% |

Major / Key Issues and Areas of Concern

SCOPE:

Environmental:

Refinement of the scope for all of the permit applications and mitigation strategies was completed, and the RC received approval for the scope of work and associated budgets as amended by AWP v4.1 from the Regional Manager on March 15. In addition, the PMT requested a number of new scope items (or items that have expanded from their original scope) that have required immediate attention. Among these are developing work plans for the parcels for which permission to enter (PTE) is being sought to conduct cultural & bio surveys, expanding the number and revising the content of the preliminary environmental evaluations of design refinements suggested by others, assisting the PMT and Authority with mitigation planning at the targeted off-site mitigation sites (including a Supplemental EIR for Grasslands), and assisting the PMT and Authority with refinements to the Programmatic Agreement governing compliance with Section 106.

15% Engineering: This work was completed by April 9, 2012, with the inclusion of the revisions to the Merced Station 15% Design.

30% Engineering:

- COE and CVFPB H&H and 408/208.10 permit requirements beyond authorized scope.
- Agency agreements with Caltrans and Flood Agencies are critical to completion of Package 1 and permitting.
- Hydraulic analysis of Duck Slough (on hold) depends on coordination with USACE on feasible alternatives and likely “major” 408 review. Additionally, coordination on 404 requirements is important. Recommend meetings in the near future that include both 404 and 408 USACE staff to ensure a proactive and inclusive solution is considered for Duck Slough.
- Direct UPRR design coordination and agency agreements are critical to the design and are currently lacking.

- Coordination with Caltrans on State Highway impact north of SJ River-to-Chowchilla and Chowchilla-to-Merced (independent of Wyes) are critical for Caltrans concurrence and future contract packages. Very preliminary concepts have been coordinated to date.
- Ongoing 3rd-party master agreements may lead to design features beyond those provided in construction package.

Procurement Package Design: Completed.

Engineering Support for Environmental Permitting: The AECOM Engineering Team continued providing engineering support as required for the preparation of numerous Environmental Permits for construction of CP1A.

Annual Work Plan FY13/14: This process needs to be initiated soon for the timely development of work anticipated beyond June 30, 2013.

SCHEDULE:

Environmental:

- The team is on schedule in support of the Authority to provide permits to the DB contractor within 90 days after NTP. The team is supporting the PMT's and Authority's efforts to obtain mitigation assurance.
- SHPO comments on the addenda for the Findings of Effect, the Built Environment Treatment Plan, and the Archaeological Treatment Plan were received on March 13 and revisions of these reports will complete the Section 106 documentation for the Fresno Station area. The team is performing identification archaeological surveys, subject to PTE, that need to be completed prior to DB contractor commencing construction.
- The team prepared and posted for PMT review memoranda evaluating the potential environmental impacts resulting from design changes at Olive, Belmont, McKinley, Golden State Blvd, Ave 15 ½, Pine/West and Straddle Bent. (Phase 1 memos) Work at additional sites (e.g., stormwater basins) is anticipated. In light of the planned design refinements, lead agencies and PMT are preparing a strategy and timeline for preparation of CEQA/NEPA documentation, requiring potential modification of the memoranda.
- It is critical to finalize agency agreements with the City of Fresno, Caltrans and UPRR to complete Construction Package 1 per schedule.

Engineering:

Realignment of Golden State Boulevard (GSB) study is completed, including comparative cost estimates, as is the alignment refinement of Chowchilla-to-Merced.

BUDGET

Budget: On March 29th the Limited Notice to Proceed (LNTP-01B) was issued for Tasks 1-8 au-

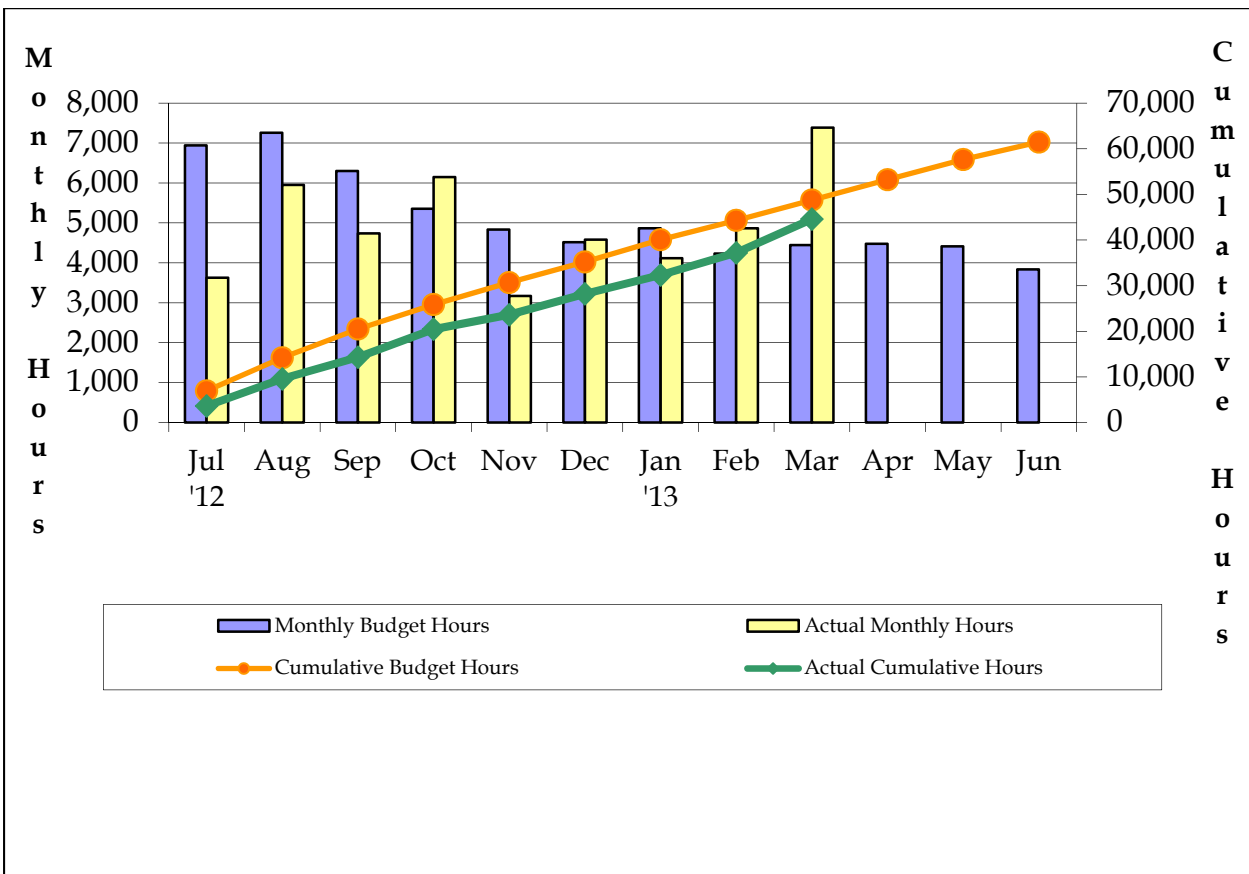
thorizing the AWP v4.1 value of \$7,795,796.

Financial Reporting

Fiscal Year Hours

The staff hours worked for Task 1 thru Task 8 total to 7,386 labor hours for the month of March, which was 66.2% above the monthly budgeted hours of 4,443 for March. Cumulative labor hours worked (44,583) from July 1st to date are 8.5% below the budgeted labor hours (48,748) for the fiscal year to date.

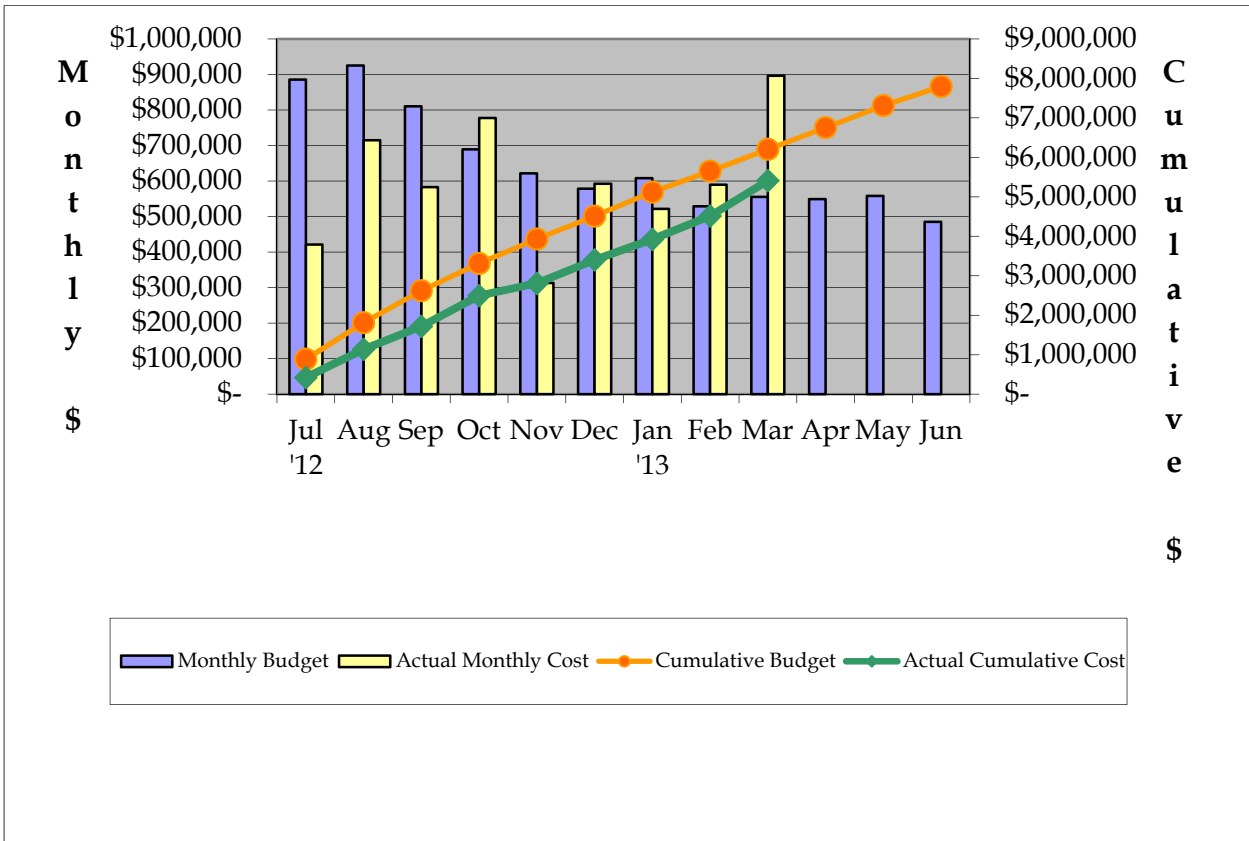
Hours Summary FY 2012 - 2013



Fiscal Year Dollars

As of March 29, 2013, NTP#01B authorized the full value of the AWP Rev 4.1 budget for FY12/13 for Merced – Fresno Task 1-8 at \$7,795,797. Tasks 1-8 expenditures for the month of March were \$895,915, which was 61.3% above the budget of \$555,310. Tasks 1-8 cumulative dollars (\$5,409,563) from July 1 to date were approximately 12.8% below the cumulative budget (\$6,203,635) to date.

Cost Summary FY 2012 – 2013



Fiscal Year Total Hours / Dollars,

| Section: | | Merced to Fresno | | | | | | | | | | | | |
|--------------------------------|----------------------|--------------------|--------------------|--------------------|--------------------|--------------------|--------------------|--------------------|--------------------|--------------------|-------------------|-------------------|-------------------|--|
| Regional Consultant | | AECOM | | | | | | | | | | | | |
| Hour Summary | | FY 2012 -2013 | | | | | | | | | | | | |
| HOURS | | | | | | | | | | | | | | |
| Budgeted | Total | July | August | September | October | November | December | January | February | March | April | May | June | |
| Project Management | 9,425 | 957 | 1,001 | 870 | 900 | 861 | 817 | 788 | 685 | 719 | 618 | 647 | 562 | |
| Public / Agency Participation | 3,578 | 313 | 328 | 273 | 314 | 301 | 287 | 314 | 273 | 287 | 301 | 314 | 273 | |
| Alternative Analysis | - | - | - | - | - | - | - | - | - | - | - | - | - | |
| Engineering | | | | | | | | | | | | | | |
| 15% Preliminary Engineering | - | - | - | - | - | - | - | - | - | - | - | - | - | |
| 30% Preliminary Engineering | 11,657 | 1,737 | 1,816 | 1,579 | 1,223 | 880 | 829 | 664 | 577 | 606 | 591 | 618 | 537 | |
| EIR / EIS Analysis | - | - | - | - | - | - | - | - | - | - | - | - | - | |
| Station Area Planning | - | - | - | - | - | - | - | - | - | - | - | - | - | |
| Draft & Final EIR/EIS | - | - | - | - | - | - | - | - | - | - | - | - | - | |
| Certification of EIR/EIS & ROD | 37,308 | 3,737 | 4,029 | 3,504 | 2,833 | 2,710 | 2,638 | 3,157 | 2,746 | 3,069 | 3,215 | 3,087 | 2,583 | |
| ROW EIR/EIS Process | - | - | - | - | - | - | - | - | - | - | - | - | - | |
| ROW Activities | 53,395 | 5,127 | 5,360 | 4,661 | 5,360 | 5,635 | 5,610 | 4,423 | 3,846 | 3,470 | 3,636 | 3,351 | 2,916 | |
| ODCs | - | - | - | - | - | - | - | - | - | - | - | - | - | |
| Totals | 115,363 | 11,871 | 12,534 | 10,887 | 10,630 | 10,387 | 10,181 | 9,346 | 8,127 | 8,151 | 8,361 | 8,017 | 6,871 | |
| 20,508 | | | | | | | | | | | | | | |
| Actual / Forecast | Total | July | August | September | October | November | December | January | February | March | April | May | June | |
| Project Management | 8,065 | 471 | 815 | 743 | 1,010 | 564 | 678 | 691 | 606 | 660 | 618 | 647 | 562 | |
| Public / Agency Participation | 4,021 | 230 | 734 | 246 | 303 | 148 | 653 | 199 | 264 | 356 | 301 | 314 | 273 | |
| Alternative Analysis | - | - | - | - | - | - | - | - | - | - | - | - | - | |
| Engineering | | | | | | | | | | | | | | |
| 15% Preliminary Engineering | - | - | - | - | - | - | - | - | - | - | - | - | - | |
| 30% Preliminary Engineering | 8,619 | 552 | 716 | 875 | 882 | 1,149 | 541 | 499 | 723 | 936 | 591 | 618 | 537 | |
| EIR / EIS Analysis | - | - | - | - | - | - | - | - | - | - | - | - | - | |
| Station Area Planning | - | - | - | - | - | - | - | - | - | - | - | - | - | |
| Draft & Final EIR/EIS | - | - | - | - | - | - | - | - | - | - | - | - | - | |
| Certification of EIR/EIS & ROD | 37,225 | 2,375 | 3,685 | 2,883 | 3,965 | 1,309 | 2,710 | 2,732 | 3,247 | 5,434 | 3,215 | 3,087 | 2,583 | |
| ROW EIR/EIS Process | - | - | - | - | - | - | - | - | - | - | - | - | - | |
| ROW Activities | 55,701 | 3,727 | 5,128 | 4,629 | 4,738 | 5,193 | 5,493 | 5,580 | 4,804 | 6,506 | 3,636 | 3,351 | 2,916 | |
| ODCs | - | - | - | - | - | - | - | - | - | - | - | - | - | |
| Monthly Totals | 113,632 | 7,355 | 11,078 | 9,376 | 10,898 | 8,363 | 10,075 | 9,701 | 9,644 | 13,892 | 8,361 | 8,017 | 6,871 | |
| Cumulative Totals | | 7,355 | 18,433 | 27,810 | 38,708 | 47,071 | 57,146 | 66,847 | 76,491 | 90,383 | 98,744 | 106,761 | 113,632 | |
| Cost Summary | FY 2012 -2013 | | | | | | | | | | | | | |
| DOLLARS | | | | | | | | | | | | | | |
| Budgeted | Total | July | August | September | October | November | December | January | February | March | April | May | June | |
| Project Management | \$1,334,034 | \$136,637 | \$142,848 | \$124,215 | \$123,671 | \$118,294 | \$112,535 | \$114,876 | \$99,892 | \$104,887 | \$86,707 | \$90,648 | \$78,824 | |
| Public / Agency Participation | \$368,893 | \$32,282 | \$33,749 | \$28,173 | \$32,399 | \$30,991 | \$29,582 | \$32,399 | \$28,173 | \$29,582 | \$30,991 | \$32,399 | \$28,173 | |
| Alternative Analysis | \$0 | \$0 | \$0 | \$0 | \$0 | \$0 | \$0 | \$0 | \$0 | \$0 | \$0 | \$0 | \$0 | |
| Engineering | | | | | | | | | | | | | | |
| 15% Preliminary Engineering | \$0 | \$0 | \$0 | \$0 | \$0 | \$0 | \$0 | \$0 | \$0 | \$0 | \$0 | \$0 | \$0 | |
| 30% Preliminary Engineering | \$1,688,139 | \$242,189 | \$252,524 | \$226,537 | \$175,557 | \$130,055 | \$122,626 | \$101,064 | \$87,882 | \$92,276 | \$87,130 | \$91,090 | \$79,209 | |
| EIR / EIS Analysis | \$0 | \$0 | \$0 | \$0 | \$0 | \$0 | \$0 | \$0 | \$0 | \$0 | \$0 | \$0 | \$0 | |
| Station Area Planning | \$0 | \$0 | \$0 | \$0 | \$0 | \$0 | \$0 | \$0 | \$0 | \$0 | \$0 | \$0 | \$0 | |
| Draft & Final EIR/EIS | \$0 | \$0 | \$0 | \$0 | \$0 | \$0 | \$0 | \$0 | \$0 | \$0 | \$0 | \$0 | \$0 | |
| Certification of EIR/EIS & ROD | \$4,404,729 | \$445,895 | \$479,411 | \$416,879 | \$340,930 | \$326,107 | \$316,010 | \$362,153 | \$314,915 | \$352,733 | \$369,530 | \$369,704 | \$310,462 | |
| ROW EIR/EIS Process | \$0 | \$0 | \$0 | \$0 | \$0 | \$0 | \$0 | \$0 | \$0 | \$0 | \$0 | \$0 | \$0 | |
| ROW Activities | \$5,500,000 | \$523,375 | \$547,164 | \$475,795 | \$547,164 | \$577,645 | \$574,868 | \$477,402 | \$415,132 | \$353,619 | \$370,458 | \$340,923 | \$296,455 | |
| ODCs | \$0 | \$0 | \$0 | \$0 | \$0 | \$0 | \$0 | \$0 | \$0 | \$0 | \$0 | \$0 | \$0 | |
| Totals | \$13,295,795 | \$1,380,378 | \$1,455,696 | \$1,271,599 | \$1,219,721 | \$1,183,092 | \$1,155,621 | \$1,087,894 | \$945,994 | \$933,097 | \$944,816 | \$924,764 | \$793,123 | |
| \$2,093,498 | | \$857,003 | \$908,532 | \$795,804 | \$672,557 | \$605,447 | \$580,753 | \$610,492 | \$530,862 | \$579,478 | \$574,358 | \$583,841 | \$496,668 | |
| Actual / Forecast | Total | July | August | September | October | November | December | January | February | March | April | May | June | |
| Project Management | \$1,160,474 | \$76,042 | \$120,793 | \$110,119 | \$138,193 | \$84,596 | \$97,718 | \$99,019 | \$77,185 | \$100,630 | \$86,707 | \$90,648 | \$78,824 | |
| Public / Agency Participation | \$373,551 | \$20,548 | \$30,424 | \$25,231 | \$30,396 | \$13,586 | \$63,709 | \$26,881 | \$35,769 | \$35,444 | \$30,991 | \$32,399 | \$28,173 | |
| Alternative Analysis | \$0 | \$0 | \$0 | \$0 | \$0 | \$0 | \$0 | \$0 | \$0 | \$0 | \$0 | \$0 | \$0 | |
| Engineering | | | | | | | | | | | | | | |
| 15% Preliminary Engineering | \$0 | \$0 | \$0 | \$0 | \$0 | \$0 | \$0 | \$0 | \$0 | \$0 | \$0 | \$0 | \$0 | |
| 30% Preliminary Engineering | \$1,243,127 | \$77,123 | \$161,513 | \$117,237 | \$151,860 | \$55,238 | \$92,241 | \$77,444 | \$114,683 | \$138,359 | \$87,130 | \$91,090 | \$79,209 | |
| EIR / EIS Analysis | \$0 | \$0 | \$0 | \$0 | \$0 | \$0 | \$0 | \$0 | \$0 | \$0 | \$0 | \$0 | \$0 | |
| Station Area Planning | \$0 | \$0 | \$0 | \$0 | \$0 | \$0 | \$0 | \$0 | \$0 | \$0 | \$0 | \$0 | \$0 | |
| Draft & Final EIR/EIS | \$0 | \$0 | \$0 | \$0 | \$0 | \$0 | \$0 | \$0 | \$0 | \$0 | \$0 | \$0 | \$0 | |
| Certification of EIR/EIS & ROD | \$4,273,214 | \$247,289 | \$402,190 | \$323,325 | \$456,874 | \$159,726 | \$333,619 | \$319,530 | \$359,483 | \$621,482 | \$369,530 | \$369,704 | \$310,462 | |
| ROW EIR/EIS Process | \$0 | \$0 | \$0 | \$0 | \$0 | \$0 | \$0 | \$0 | \$0 | \$0 | \$0 | \$0 | \$0 | |
| ROW Activities | \$5,333,106 | \$313,380 | \$443,485 | \$446,662 | \$485,870 | \$483,949 | \$477,950 | \$597,673 | \$463,145 | \$613,156 | \$370,458 | \$340,923 | \$296,455 | |
| ODCs | \$0 | \$0 | \$0 | \$0 | \$0 | \$0 | \$0 | \$0 | \$0 | \$0 | \$0 | \$0 | \$0 | |
| Monthly Totals | 12,383,472 | \$734,382 | \$1,158,405 | \$1,022,574 | \$1,263,193 | \$797,095 | \$1,065,237 | \$1,120,547 | \$1,050,265 | \$1,509,071 | \$944,816 | \$924,764 | \$793,123 | |
| Cumulative Totals | | \$734,382 | 1,892,787 | 2,915,361 | 4,178,554 | 4,975,649 | 6,040,886 | 7,161,433 | 8,211,698 | 9,720,769 | 10,665,585 | 11,590,349 | 12,383,472 | |
| | Forecast in RED | | | | | | | | | | | | | |

Program Total Hours / Dollars

| Hour Summary | FY 2006 -2014 | | | | | | | | | |
|----------------------------------|----------------|----------------|----------------|----------------|----------------|----------------|----------------|----------------|----------------|--|
| HOURS | | | | | | | | | | |
| Budgeted | Total | 2006/07 | 2007/08 | 2008/09 | 2009/10 | 2010/11 | 2011/12 | 2012/13 | 2013/14 | |
| 1 Project Management | 38,017 | 410 | 145 | 1,200 | 3,784 | 6,276 | 7,807 | 9,425 | 8,970 | |
| 2 Public / Agency Participation | 24,701 | 143 | 1,163 | 3,372 | 2,277 | 3,242 | 6,007 | 3,578 | 4,919 | |
| 3 Alternative Analysis | 12,144 | 355 | 53 | 5,700 | 5,343 | 694 | - | - | - | |
| 4 Engineering | | | | | | | | | | |
| 15% Preliminary Engineering | 70,741 | 249 | - | 3,000 | 18,089 | 48,125 | 1,278 | - | - | |
| 30% Preliminary Engineering | 152,991 | - | - | - | - | - | 38,433 | 11,657 | 102,901 | |
| 5 EIR / EIS Analysis | 131,642 | 1,020 | 532 | 7,000 | 28,134 | 68,728 | 26,229 | - | - | |
| 6 Station Area Planning | 4,193 | - | - | 1,330 | 2,294 | 570 | - | - | - | |
| 7 Draft & Final EIR/EIS | 34,551 | - | - | - | 1,290 | 9,306 | 23,955 | - | - | |
| 8 Certification of EIR/EIS & ROD | 60,449 | - | - | - | - | 30 | 12,153 | 36,810 | 11,456 | |
| 9 ROW EIR/EIS Process | 5,446 | - | - | - | - | 42 | 5,404 | - | - | |
| 10 ROW Activities | 117,541 | - | - | - | - | - | 28,032 | 53,395 | 36,114 | |
| ODC ODCs | - | - | - | - | - | - | - | - | - | |
| Totals | 652,416 | 2,177 | 1,892 | 21,602 | 61,211 | 137,012 | 149,297 | 114,865 | 164,360 | |
| Actual / Forecast | Total | 2006/07 | 2007/08 | 2008/09 | 2009/10 | 2010/11 | 2011/12 | 2012/13 | 2013/14 | |
| 1 Project Management | 35,342 | 410 | 145 | 785 | 2,953 | 6,276 | 7,739 | 8,065 | 8,970 | |
| 2 Public / Agency Participation | 25,909 | 143 | 1,163 | 3,082 | 3,063 | 3,242 | 6,277 | 4,021 | 4,919 | |
| 3 Alternative Analysis | 16,594 | 355 | 53 | 4,287 | 11,206 | 694 | - | - | - | |
| 4 Engineering | | | | | | | | | | |
| 15% Preliminary Engineering | 62,837 | 249 | - | 271 | 12,914 | 48,125 | 1,278 | - | - | |
| 30% Preliminary Engineering | 143,556 | - | - | - | - | - | 32,036 | 8,619 | 102,901 | |
| 5 EIR / EIS Analysis | 137,986 | 1,020 | 532 | 1,743 | 33,768 | 68,728 | 32,197 | - | - | |
| 6 Station Area Planning | 3,093 | - | - | 552 | 1,972 | 570 | - | - | - | |
| 7 Draft & Final EIR/EIS | 41,749 | - | - | - | - | 9,306 | 32,444 | - | - | |
| 8 Certification of EIR/EIS & ROD | 55,538 | - | - | - | - | 30 | 7,451 | 36,601 | 11,456 | |
| 9 ROW EIR/EIS Process | 5,446 | - | - | - | - | 42 | 5,404 | - | - | |
| 10 ROW Activities | 119,847 | - | - | - | - | - | 28,032 | 55,701 | 36,114 | |
| ODC ODCs | - | - | - | - | - | - | - | - | - | |
| Monthly Totals | 647,898 | 2,177 | 1,892 | 10,719 | 65,874 | 137,012 | 152,856 | 113,008 | 164,360 | |
| Cumulative Totals | | 2,177 | 4,069 | 14,788 | 80,663 | 217,675 | 370,530 | 483,538 | 647,898 | |

| Cost Summary | | FY 2006-2014 | | | | | | | | |
|----------------------------------|---------------------|------------------|------------------|--------------------|---------------------|---------------------|---------------------|---------------------|---------------------|--|
| DOLLARS | | | | | | | | | | |
| Budgeted | Total | 2006/07 | 2007/08 | 2008/09 | 2009/10 | 2010/11 | 2011/12 | 2012/13 | 2013/14 | |
| 1 Project Management | \$5,695,744 | \$96,458 | \$35,642 | \$166,087 | \$526,999 | \$1,021,639 | \$1,156,364 | \$1,334,034 | \$1,358,521 | |
| 2 Public / Agency Participation | \$3,043,022 | \$29,776 | \$188,260 | \$341,001 | \$366,931 | \$355,898 | \$861,211 | \$368,893 | \$531,053 | |
| 3 Alternative Analysis | \$2,079,159 | \$33,819 | \$8,395 | \$522,722 | \$1,450,484 | \$63,739 | \$0 | \$0 | \$0 | |
| 4 Engineering | | | | | | | | | | |
| 15% Preliminary Engineering | \$8,210,722 | \$51,166 | \$0 | \$60,393 | \$1,858,126 | \$6,051,827 | \$189,210 | \$0 | \$0 | |
| 30% Preliminary Engineering | \$21,311,203 | \$0 | \$0 | \$0 | \$0 | \$0 | \$4,863,206 | \$1,688,139 | \$14,759,858 | |
| 5 EIR / EIS Analysis | \$16,223,046 | \$103,203 | \$84,576 | \$208,702 | \$4,382,677 | \$7,915,585 | \$3,528,303 | \$0 | \$0 | |
| 6 Station Area Planning | \$488,467 | \$0 | \$0 | \$78,660 | \$321,976 | \$87,831 | \$0 | \$0 | \$0 | |
| 7 Draft & Final EIR/EIS | \$4,219,725 | \$0 | \$0 | \$0 | \$0 | \$956,964 | \$3,262,761 | \$0 | \$0 | |
| 8 Certification of EIR/EIS & ROD | \$6,634,277 | \$0 | \$0 | \$0 | \$0 | \$7,954 | \$894,745 | \$4,404,728 | \$1,326,850 | |
| 9 ROW Effort EIR/EIS Process | \$509,645 | \$0 | \$0 | \$0 | \$0 | \$10,598 | \$499,047 | \$0 | \$0 | |
| 10 ROW Activities | \$12,367,583 | \$0 | \$0 | \$0 | \$0 | \$0 | \$3,237,325 | \$5,500,000 | \$3,630,258 | |
| ODC ODCs | \$0 | \$0 | \$0 | \$0 | \$0 | \$0 | \$0 | \$0 | \$0 | |
| Totals | \$80,782,593 | \$314,421 | \$316,872 | \$1,377,565 | \$8,907,194 | \$16,472,035 | \$18,492,172 | \$13,295,794 | \$21,606,540 | |
| Actual / Forecast | | | | | | | | | | |
| 1 Project Management | \$5,559,872 | \$96,458 | \$35,642 | \$166,087 | \$526,999 | \$1,021,639 | \$1,194,052 | \$1,160,474 | \$1,358,521 | |
| 2 Public / Agency Participation | \$3,132,541 | \$29,776 | \$188,260 | \$341,001 | \$366,931 | \$355,898 | \$946,072 | \$373,551 | \$531,053 | |
| 3 Alternative Analysis | \$2,079,159 | \$33,820 | \$8,395 | \$522,722 | \$1,450,484 | \$63,739 | \$0 | \$0 | \$0 | |
| 4 Engineering | | | | | | | | | | |
| 15% Preliminary Engineering | \$8,204,724 | \$51,167 | \$0 | \$60,393 | \$1,858,126 | \$6,051,827 | \$183,210 | \$0 | \$0 | |
| 30% Preliminary Engineering | \$20,491,954 | \$0 | \$0 | \$0 | \$0 | \$0 | \$4,488,969 | \$1,243,127 | \$14,759,858 | |
| 5 EIR / EIS Analysis | \$16,207,245 | \$103,203 | \$84,576 | \$208,702 | \$4,382,677 | \$7,915,585 | \$3,512,502 | \$0 | \$0 | |
| 6 Station Area Planning | \$488,467 | \$0 | \$0 | \$78,660 | \$321,976 | \$87,831 | \$0 | \$0 | \$0 | |
| 7 Draft & Final EIR/EIS | \$4,444,646 | \$0 | \$0 | \$0 | \$0 | \$956,964 | \$3,487,682 | \$0 | \$0 | |
| 8 Certification of EIR/EIS & ROD | \$6,383,596 | \$0 | \$0 | \$0 | \$0 | \$7,954 | \$838,286 | \$4,210,506 | \$1,326,850 | |
| 9 ROW EIR/EIS Process | \$509,645 | \$0 | \$0 | \$0 | \$0 | \$10,598 | \$499,047 | \$0 | \$0 | |
| 10 ROW Activities | \$12,200,689 | \$0 | \$0 | \$0 | \$0 | \$0 | \$3,237,325 | \$5,333,106 | \$3,630,258 | |
| ODC ODCs | \$0 | \$0 | \$0 | \$0 | \$0 | \$0 | \$0 | \$0 | \$0 | |
| Monthly Totals | \$79,702,538 | \$314,423 | \$316,872 | \$1,377,565 | \$8,907,194 | \$16,472,035 | \$18,387,145 | \$12,320,764 | \$21,606,540 | |
| Cumulative Totals | | \$314,423 | \$631,295 | \$2,008,860 | \$10,916,054 | \$27,388,089 | \$45,775,234 | \$58,095,998 | \$79,702,538 | |
| <i>Italics = Forecast</i> | | | | | | | | | | |

| Physical Percent Complete - Program Total* (Actual/Forecast) | | | | | | | | | | |
|--|-----------|-----------|-----------|------------|------------|------------|------------|-------------|--|--|
| | 2006/07 | 2007/08 | 2008/09 | 2009/10 | 2010/11 | 2011/12 | 2012/13 | 2013/14 | | |
| 1 Project Management | 2% | 2% | 5% | 15% | 33% | 55% | 76% | 100% | | |
| 2 Public / Agency Participation | 1% | 7% | 18% | 30% | 41% | 71% | 83% | 100% | | |
| 3 Alternative Analysis | 2% | 2% | 27% | 97% | 100% | 100% | 100% | 100% | | |
| 4 Engineering | | | | | | | | | | |
| 15% Preliminary Engineering | 1% | 1% | 1% | 24% | 98% | 100% | 100% | 100% | | |
| 30% Preliminary Engineering | 0% | 0% | 0% | 0% | 0% | 22% | 28% | 100% | | |
| 5 EIR / EIS Analysis | 1% | 1% | 2% | 29% | 78% | 100% | 100% | 100% | | |
| 6 Station Area Planning | 0% | 0% | 16% | 82% | 100% | 100% | 100% | 100% | | |
| 7 Draft & Final EIR/EIS | 0% | 0% | 0% | 0% | 22% | 100% | 100% | 100% | | |
| 8 Certification of EIR/EIS & ROD | 0% | 0% | 0% | 0% | 0% | 13% | 79% | 100% | | |
| 9 ROW Effort EIR/EIS Process | 0% | 0% | 0% | 0% | 2% | 100% | 100% | 100% | | |
| 10 ROW Activities | 0% | 0% | 0% | 0% | 0% | 27% | 70% | 100% | | |
| TOTAL Annual PROGRESS | 0% | 1% | 3% | 14% | 34% | 57% | 73% | 100% | | |
| *Physical Percent Complete = Actual Cost / (Actual Cost + Estimate Cost to Completion) | | | | | | | | | | |





California High Speed Rail Authority

Cost Performance Report
March 2013

Merced-Fresno

Planned Progress 70.0%
Actual Progress 68.8%

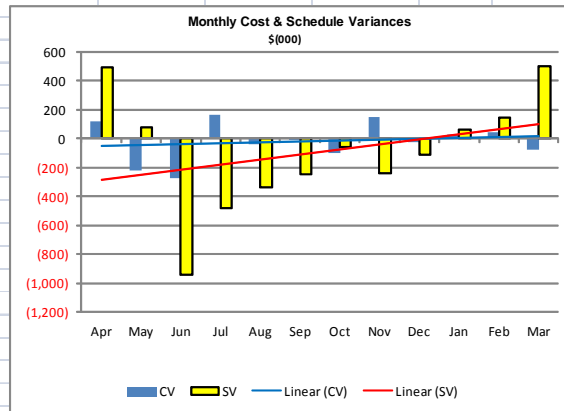
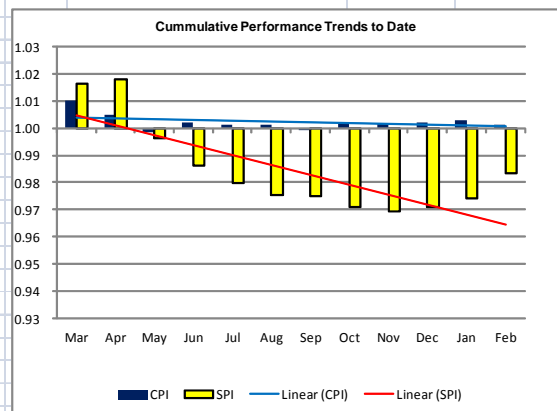
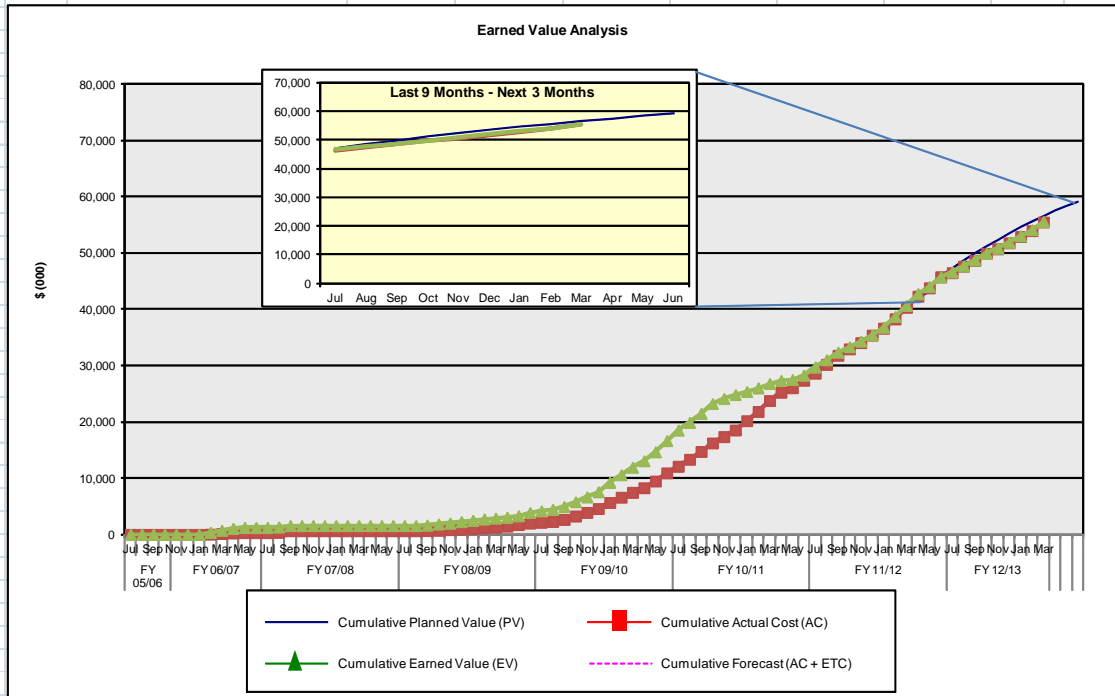


Dollar amounts in thousands

| WBS | Task | Total Labor Budget* (BAC) | Planned (PV) | Actual Cost (AC) | Earned (EV) | Forecast (ETC) | Total Cost (EAC) | CPI | SPI |
|--------------|----------------------------------|---------------------------|-----------------|------------------|-----------------|-----------------|------------------|-------------|-------------|
| 1 | Project Management | \$5,696 | \$4,081 | \$3,945 | \$3,927 | \$1,615 | \$5,560 | 1.00 | 0.96 |
| 2 | Public / Agency Participation | \$3,043 | \$2,420 | \$2,510 | \$2,495 | \$623 | \$3,133 | 0.99 | 1.03 |
| 3 | Project Definition | \$2,079 | \$2,079 | \$2,079 | \$2,079 | \$0 | \$2,079 | 1.00 | 1.00 |
| 4 | Preliminary Engineering | \$29,522 | \$14,505 | \$13,679 | \$13,816 | \$15,017 | \$28,697 | 1.01 | 0.95 |
| 4.1 | Infrastructure 15% | \$8,211 | \$8,211 | \$8,205 | \$8,211 | \$0 | \$8,205 | 1.00 | 1.00 |
| 4.11 | Infrastructure 30% | \$21,311 | \$6,294 | \$5,475 | \$5,605 | \$15,017 | \$20,492 | 1.02 | 0.89 |
| 5 | EIR/EIS Analysis | \$16,223 | \$16,223 | \$16,207 | \$16,229 | \$0 | \$16,207 | 1.00 | 1.00 |
| 6 | Station Area Planning | \$488 | \$488 | \$488 | \$489 | \$0 | \$488 | 1.00 | 1.00 |
| 7 | Draft and Final EIR/EIS | \$4,220 | \$4,220 | \$4,445 | \$4,221 | \$0 | \$4,445 | 0.95 | 1.00 |
| 8 | Certification of EIR/EIS and ROD | \$6,634 | \$4,258 | \$4,070 | \$3,649 | \$2,377 | \$6,446 | 0.90 | 0.86 |
| 9 | ROW EIR/EIS Process | \$510 | \$510 | \$510 | \$510 | \$0 | \$510 | 1.00 | 1.00 |
| 10 | ROW Activities | \$12,368 | \$7,729 | \$7,563 | \$8,163 | \$4,638 | \$12,201 | 1.08 | 1.06 |
| ODC | Other Direct Costs * | \$0 | \$0 | \$0 | \$0 | \$0 | \$0 | NA | NA |
| Total | | \$80,783 | \$56,513 | \$55,496 | \$55,576 | \$24,269 | \$79,765 | 1.00 | 0.98 |

* Total Labor Budget - is the planned cost of all work less Other Direct Costs (ODCs).

| | | | | |
|---|---------|--|-------|-----------------|
| Current Cost Variance (CV) to Date (EV - AC): | \$80 | Percent under (+) or over (-) budget | 0.1% | UNDER BUDGET |
| Current Schedule Variance (SV) to Date (EV - PV): | (\$938) | Percent ahead (+) or behind (-) schedule | -1.7% | BEHIND SCHEDULE |



Deliverables Status (Percent Complete)

| Task | Sub-task | Deliverable | Version | Start Date | Due Date | Date Delivered | Percent Complete | ProjectSolve Location |
|------|----------|------------------------------------|---------|------------|----------|----------------|------------------|---|
| 1 | 1.1 | Project Management Plan | Draft | 7/30/09 | 7/30/09 | 7/30/09 | 100% | |
| 1 | 1.1 | Project Management Plan | Revised | 8/21/09 | 10/1/09 | 8/25/09 | 100% | https://ww3.projectsolve2.com/eRoom/SFOF/CAHSRProgramMgmt/0_53641 |
| 2 | 2.1 | Public Participation Plan | Draft | 7/1/09 | 7/24/09 | 7/24/09 | 100% | |
| 2 | 2.1 | Public Participation Plan | Revised | 8/15/09 | 8/30/09 | 9/1/09 | 100% | https://ww3.projectsolve2.com/eRoom/SFOF/CHSTP-MercedtoFresnoSection/0_59376 |
| 2 | 2.2 | Agency Coordination Plan | Draft | 8/15/09 | 8/14/09 | 8/14/08 | 100% | |
| 2 | 2.2 | Agency Coordination Plan | Revised | 8/14/09 | 12/9/10 | 8/25/09 | 100% | https://ww3.projectsolve2.com/eRoom/SFOF/CHSTP-MercedtoFresnoSection/0_72ec1 |
| 3 | 3.1 | NOI/NOP | Revised | 2/2/09 | 3/10/09 | 3/10/09 | 100% | https://ww3.projectsolve2.com/eRoom/SFOF/CHSTP-MercedtoFresnoSection/0_5934e |
| 3 | 3.2 | Prior Studies Technical Memorandum | Draft | 1/1/09 | 4/27/09 | 9/11/09 | 100% | https://ww3.projectsolve2.com/eRoom/SFOF/CHSTP-MercedtoFresnoSection/0_60c87 |
| 3 | 3.2 | Scoping Report | Revised | 3/09 | 4/09 | 4/09 | 100% | https://ww3.projectsolve2.com/eRoom/SFOF/CHSTP-MercedtoFresnoSection/0_59351 |
| 3 | 3.3 | Refine Purpose and Need | Draft | 4/10 | 7/10 | 10/4/10 | 100% | https://ww3.projectsolve2.com/eRoom/SFOF/CHSTP-MercedtoFresnoSection/0_59a8a |
| 3 | 3.4 | Alternatives Analysis Report | Draft | 10/09 | 11/09 | 3/1/10 | 100% | |
| 3 | 3.4 | Alternatives Analysis Report | Revised | 11/09 | 3/29/10 | 4/7/10 | 100% | https://ww3.projectsolve2.com/eRoom/SFOF/CHSTP-MercedtoFresnoSection/0_59b95 |
| 3 | 3.4 | Supplemental AA Report | Draft | 4/7/10 | 7/29/10 | 7/29/10 | 100% | https://ww3.projectsolve2.com/eRoom/SFOF/CHSTP-MercedtoFresnoSection/0_9d43c |
| 3 | 3.5 | Project Description | Draft | 11/09 | 7/27/10 | 10/4/10 | 100% | https://ww3.projectsolve2.com/eRoom/SFOF/CHSTP-MercedtoFresnoSection/0_59a8a |
| 3 | 3.6 | Existing Transportation Conditions | Draft | 4/7/10 | 9/30/10 | 9/30/10 | 100% | https://ww3.projectsolve2.com/eRoom/SFOF/CHSTP-MercedtoFresnoSection/0_59a3e |
| 4 | 4.1.9 | 15% Draft Hydraulic & Floodplain | Draft | 7/1/10 | 10/28/10 | 12/9/10 | 100% | https://ww3.projectsolve2.com/eRoom/SFOF/CHSTP-MercedtoFresnoSection/0_b0f04 |
| 4 | 4.1.9 | 15% Draft SWDR | Draft | 7/1/10 | 12/10/10 | 12/9/10 | 100% | https://ww3.projectsolve2.com/eRoom/SFOF/CHSTP-MercedtoFresnoSection/0_b0f04 |
| 4 | 4.1.9 | 15% Draft SWMP | Draft | 7/1/10 | 12/10/10 | 12/9/10 | 100% | https://ww3.projectsolve2.com/eRoom/SFOF/CHSTP-MercedtoFresnoSection/0_b0f04 |
| 4. | 4.1.11 | Geotechnical Report BNSF & Wyes | Draft | 7/1/10 | 12/23/10 | 12/23/10 | 100% | https://ww3.projectsolve2.com/eRoom/SFOF/CHSTP-MercedtoFresnoSection/0_b0f04 |

| Task | Sub-task | Deliverable | Version | Start Date | Due Date | Date Delivered | Percent Complete | ProjectSolve Location |
|------|----------|---|-------------|------------|----------|----------------|------------------|---|
| 4. | 4.1.11 | Geotechnical Report BNSF & Wyes | Draft | 7/1/10 | 12/23/10 | 12/23/10 | 100% | https://ww3.projectsolve2.com/eRoom/SFOF/CHSTP-MercedtoFresnoSection/0_b0f04 |
| 4 | 4.1.11 | Geotechnical Report UPRR-SR99 | Draft | 7/1/10 | 12/23/10 | 12/23/10 | 100% | https://ww3.projectsolve2.com/eRoom/SFOF/CHSTP-MercedtoFresnoSection/0_b0f04 |
| 4 | 4.1.13 | Right Of Way Report | Draft | 7/1/10 | 12/23/10 | 12/23/10 | 100% | https://ww3.projectsolve2.com/eRoom/SFOF/CHSTP-MercedtoFresnoSection/0_b0f04 |
| 4 | 4.9.1 | 15% In-Progress Track Alignment Submittal | In-progress | 7/1/10 | 10/28/10 | 10/28/10 | 100% | https://ww3.projectsolve2.com/eRoom/SFOF/CHSTP-MercedtoFresnoSection/0_acad5 |
| 4 | 4.9.2 | 15% In-Progress Structure Plan Submittal | In-progress | 7/1/10 | 10/26/10 | 10/26/10 | 100% | https://ww3.projectsolve2.com/eRoom/SFOF/CHSTP-MercedtoFresnoSection/0_ad350 |
| 4 | 4.9.3 | 15% In-Progress Station Plan Submittal | In-progress | 7/1/10 | 10/26/10 | 10/26/10 | 100% | https://ww3.projectsolve2.com/eRoom/SFOF/CHSTP-MercedtoFresnoSection/0_ada7f |
| 4 | 4.9.3 | Maintenance Facilities Report | Draft | 7/1/10 | 12/23/10 | 12/23/10 | 100% | https://ww3.projectsolve2.com/eRoom/SFOF/CHSTP-MercedtoFresnoSection/0_b0f04 |
| 4 | 4.9.5 | 15% In-Progress Traction Power Plan Submittal | In-progress | 7/1/10 | 10/26/10 | 10/26/10 | 100% | https://ww3.projectsolve2.com/eRoom/SFOF/CHSTP-MercedtoFresnoSection/0_ada76 |
| 4 | 4.9.5 | 15% Utility Report Submittal | Draft | 7/1/10 | 10/28/10 | 12/23/10 | 100% | https://ww3.projectsolve2.com/eRoom/SFOF/CHSTP-MercedtoFresnoSection/0_b0f04 |
| 4 | 4.9.15 | 15% In-Progress Roadway Plan Submittal | In-progress | 7/1/10 | 10/26/10 | 10/26/10 | 100% | https://ww3.projectsolve2.com/eRoom/SFOF/CHSTP-MercedtoFresnoSection/0_ad12c |
| 4 | 4.9.7 | 15% Draft Design Full Package submittal | Draft | 10/26/10 | 11/23/10 | 12/23/10 | 100% | https://ww3.projectsolve2.com/eRoom/SFOF/CHSTP-MercedtoFresnoSection/0_59aed |
| 4 | 4.9.7 | Record Set 15% Draft Design Submittal | Record Set | 12/23/10 | 2/24/11 | 5/03/11 | 100% | CD |
| 4 | 4.9.9 | 15% Final Design Full Package submittal | Final | | 12/30/10 | 8/1/11 | 100% | https://ww3.projectsolve2.com/eRoom/SFOF/CHSTP-MercedtoFresnoSection/0_59ae4 |
| 4 | 4.9.9 | 15% Final Station Design Site C | Final | | 6/30/11 | 6/29/11 | 100% | https://ww3.projectsolve2.com/eRoom/SFOF/CHSTP-MercedtoFresnoSection/0_59ae4 |
| 4 | 4.19.1 | In-Progress Procurement Contract Package 1A | Draft | 7/1/11 | 8/30/11 | 8/30/11 | 100% | https://ww3.projectsolve2.com/eRoom/SFOF/CHSTP-MercedtoFresnoSection/0_cc5a1 |
| 4 | 4.19.1 | Draft Procurement Contract Package 1A | Draft | 9/1/11 | 9/30/11 | 9/30/11 | 100% | https://ww3.projectsolve2.com/eRoom/SFOF/CHSTP-MercedtoFresnoSection/0_59adb |
| | | | | | | | | |

| Task | Sub-task | Deliverable | Version | Start Date | Due Date | Date Delivered | Percent Complete | ProjectSolve Location |
|------|----------|---|-----------------|------------|----------|----------------|------------------|---|
| 4 | 4.19.2 | Draft /Final Procurement Contract Package 1A | Draft/ Final | 10/1/11 | 11/11/11 | 11/11/11 | 100% | https://ww3.projectsolve2.com/eRoom/SFOF/CHSTP-MercedtoFresnoSection/0_cfbe5 |
| 4 | 4.11.1 | Survey & Mapping- Trackway | final | 8/1/12 | 12/25/12 | 12/21/12 | 100% | |
| 4 | 4.11.1 | Survey & Mapping- Channels | final | 8/1/12 | 12/25/12 | | 85% | |
| 4 | 4.11.2 | Alignment –Plan & Profiles design files | draft | 12/25/12 | 2/28/13 | | 10% | |
| 4 | 4.11.5 | Structures- review with data | draft | 8/1/12 | 4/23/13 | | 0% | |
| 4 | 4.11.9 | H&H for permitting | draft | 8/5/12 | 1/2/13 | | 85% | |
| 4 | 4.11.10 | Utilities | draft | 8/1/12 | 12/28/12 | | 0% | |
| 4 | 4.11.11 | Geotech Baseline Report | final | 8/1/12 | 10/12/12 | | 99% | |
| 4 | 4.11.15 | Roadway facility review | draft | 10/9/12 | 4/15/13 | | 0% | |
| 5 | 5.2.1 | Transportation TR | Final | 6/1/11 | 8/30/11 | 8/12/11 | 100% | https://ww3.projectsolve2.com/eRoom/SFOF/CHSTP-MercedtoFresnoSection/0_596fe |
| 6 | 6.2 | Station Area Development Planning Document | Draft | 5/7/10 | 7/30/11 | 7/30/11 | 100% | |
| 7 | 7.1 | Prepare Admin Draft EIR/EIS | Draft | 7/1/10 | 9/30/10 | 10/5/10 | 100% | https://ww3.projectsolve2.com/eRoom/SFOF/CHSTP-MercedtoFresnoSection/0_598f3 |
| 7 | 7.2 | Prepare Draft EIR/EIS | Revised | 1/1/11 | 7/13/11 | 7/25/11 | 100% | https://ww3.projectsolve2.com/eRoom/SFOF/CHSTP-MercedtoFresnoSection/0_598f3 |
| 7 | 7.2 | Draft EIR/EIS | FINAL | 7/13/11 | 8/3/11 | 8/3/11 | 100% | https://ww3.projectsolve2.com/eRoom/SFOF/CHSTP-MercedtoFresnoSection/0_598f3 |
| 7 | 7.3 | Admin DRAFT/FINAL EIR/EIS | Draft | 10/15/11 | 12/30/11 | 12/30/11 | 100% | https://ww3.projectsolve2.com/eRoom/SFOF/CHSTP-MercedtoFresnoSection/0_59713 |
| 7 | 7.6 | Final EIR/EIS | Final | 2/1/12 | 4/9/12 | 4/10/12 | 100% | https://ww3.projectsolve2.com/eRoom/SFOF/CHSTP-MercedtoFresnoSection/0_59713 |
| 7 | 7.6 | Appendices | Final | 2/12/12 | 4/10/12 | 2/27/12 | 100% | https://ww3.projectsolve2.com/eRoom/SFOF/CHSTP-MercedtoFresnoSection/0_d4d50 |
| 7 | 7.6 | Volume III Plans | Final | 2/12/12 | 4/10/12 | 4/5/12 | 100% | https://ww3.projectsolve2.com/eRoom/SFOF/CHSTP-MercedtoFresnoSection/0_d7a15 |
| 8 | 8.4.1 | USACE 404 Permit | Final | 4/6/11 | 6/29/13 | | 50% | |
| 8 | 8.4.2 | SWRCB – 401 Certification | Final | 7/2/12 | 5/7/13 | | 50% | |
| 8 | 8.4.3 | CDFG – 1602 Agreements | Final | 6/1/12 | 4/30/13 | | 50% | |
| 8 | 8.4.4 | Section 106 Consultation | Final | 4/2/12 | 4/18/13 | | 50% | |
| 8 | 8.4.5 | CDFG 2081 Permit | Final | 3/26/12 | 6/7/13 | | 50% | |
| 8 | 8.4.7 | Permittee-Responsible Mitigation Site Survey | Final | 4/2/12 | 3/18/13 | | 50% | |
| 8 | 8.4.8.1 | FOE Addendum | Final | 2/13 | 3/13 | | 0% | |
| 8 | 8.4.8.2 | ATP Addendum | Final | 2/13 | 3/13 | | 0% | |
| 8 | 8.4.8.3 | BETP Addendum | Final | 1/13 | 3/13 | | 0% | |
| 8 | 8.4.8.4 | Monthly Progress Reports and Supplemental Section 106 Documents | Final | 1/13 | 6/13 | | 0% | |
| 8 | 8.4.8.5 | Identification Level Archaeological Surveys | Final | 1/13 | 6/13 | | 0% | |
| 8 | 8.4.8.6 | Geoarchaeological Surveys | Final | 1/13 | 4/13 | | 0% | |

| | | | | | | | | |
|---|----------|--|-------|---------|---------|--|-----|--|
| 8 | 8.4.8.7 | Preconstruction Conditions Assessments | Final | 1/13 | 4/13 | | 0% | |
| 8 | 8.4.8.8 | Plans for Protection and Stabilization | Final | 3/13 | 5/13 | | 0% | |
| 8 | 8.4.8.9 | Response Plans for Unanticipated Effects | Final | 3/13 | 5/13 | | 0% | |
| 8 | 8.4.8.10 | Plans for Noise/Vibration Effects | Final | 3/13 | 5/13 | | 0% | |
| 8 | 8.4.8.11 | HABS/HAER/HALS Documentation | Final | 4/13 | 5/13 | | 0% | |
| 8 | 8.4.8.12 | Historic Preservation Design Review | Final | TBD | TBD | | 0% | |
| 8 | 8.4.8.13 | Extended Phase I Archaeological Survey | Final | 1/13 | 5/13 | | 0% | |
| 8 | 8.4.8.14 | Intensive Level Archaeological Investigations | Final | 2/13 | 6/13 | | 0% | |
| 8 | 8.4.8.15 | Data Recovery Investigations | Final | 3/13 | 6/13 | | 0% | |
| 8 | 8.4.9 | Support for Litigation and Construction (MM+) | Final | 7/1/12 | 6/30/13 | | 50% | |
| 8 | 8.4.10 | Support for Additional Enviro Analysis (Design Refinements) | Final | 7/1/12 | 6/30/13 | | 25% | |
| 8 | 8.4.12 | 402 Waste Discharge Report | Final | 9/12 | FY13/14 | | 10% | |
| 8 | 8.4.13 | Administrative Record | Final | 12/1/12 | 6/30/13 | | 0% | |
| | | | | | | | | |
| | | | | | | | | |
| | | | | | | | | |

Key Developments and Accomplishments

Environmental:

All permit applications and the PRMP (Permittee-Responsible Mitigation Plan) (with the original five sites) were submitted to regulatory agencies.

Engineering: Continued support to PMT and Authority on CP1 and agency permitting. Continued to support CVFPB and USACE on hydraulic studies needed for 408/208.10 permits. Submitted the new alignment concept for GSB including a white paper on retention basins. Submitted the Arbolada-overcrossing exhibit for interface with Caltrans. Reviewing the impact to 3rd-party utilities associated with future-abandoned SR-99 segment north of Chowchilla. Submitted listing of non-waterway utilities impacted. Developing waterway-access-issues sample conditions for discussion.

Task 1. Project Management

- a) Monthly Progress Report covering February 2013 was prepared and transmitted to the Program Management Team (PMT) for review.
- b) Processed invoice and transmitted it to CHSRA.
- c) Requested to the PMT and PMO reinstatement of team staff, which had been struck-out on the Master Personnel Request (MPR) database. Received resolution and an updated MPR from the PMO on March 21st.
- d) Participated in several coordination meetings among task leaders.
- e) Participated in weekly meetings with Regional Program Manager.

- f) Participated in weekly Engineering meetings.
- g) Participated in bi-weekly joint ROW meetings with URS team and the Authority (i.e., Patricia Jones and her staff). These meetings will only be held first Wednesday of the Month moving forwards.

CH2M Hill

- a) Participated in weekly MF Management Team/PMT Coordination Meetings.
- b) Participated in monthly MF Management Team/PMT/PMO Status Meeting.
- c) Coordinated meetings and teleconferences with AECOM.
- d) Coordinated meetings and teleconferences with PMT.
- e) Prepared weekly schedule updates for internal task-tracking purposes.
- f) Prepared monthly schedule update for PMT.
- g) Conducted administrative activities including contract/subcontract management and task/budget reconciliation.

Task 1.6 Special Projects

Civil Site Design/Planning for Klein's Truck Stop

No activity.

Task 2. Public Participation Program

- a) Completed the following tasks related to regional and statewide communications:
 - Managed and responded to stakeholder inquiries and monitored CommentSense.
 - Identified and scheduled priority stakeholder meetings.
 - Participated in Statewide Communications and Outreach Call (3/27).
- b) Completed the following tasks related to project management:
 - Submitted CommentSense monthly report (3/15).
 - Managed stakeholder toll free phone number.
 - Submitted weekly outreach report and meeting log to Authority (3/1, 3/8, 3/15, 3/22, 3/29).
 - Submitted weekly Merced to Fresno Schedule Progress Report (3/5, 3/12, 3/19, 3/26).
 - Completed February progress report (3/5).
 - Participated in weekly environmental coordination calls (3/11, 3/18).
 - Conducted weekly M-F outreach team coordination calls (3/5, 3/12, 3/19, 3/26).
 - Participated in AECOM Management Team Weekly Conference Call (3/7, 3/21, 3/28).
 - Attended M-F Monthly Team Meeting (3/27).
- c) Completed the following tasks related to outreach:
 - Participated in Central Valley Wye Community Meetings Briefing Call (3/12).
 - Supported SJ-M planning efforts for Wye Public Information Meetings.
 - Scheduled stakeholder meetings:
 1. Madera County Supervisors Rodriguez and Nevarez (Jeff Morales and Diana Gomez) (3/27).

2. Madera Unified School District Presentation (Diana Gomez) (4/17).
 - o Attended stakeholder meetings:
 1. Central Valley Wye Public Information Meeting, Fairmead (3/20).
 2. San Joaquin Joint Powers Authority Board Meeting (3/22).
 3. Central Valley Wye Public Information Meeting, Chowchilla (3/27).

CirclePoint

- a) Coordinated with SJ-M team on Wye outreach conducted to date.
- b) Reviewed and provided input on Wye meeting summary developed by SJ-M team.
- c) Participated in Wye Public Information Meeting on 3/20 (Fairmead) and 3/27 (Chowchilla).
- d) Began review/update of Activate Direct database.
- e) Managed stakeholder toll free phone number and returned calls.
- f) Managed and responded to 29 new CommentSense inquiries.
- g) Continued to update the project mailing list.
- h) Completed February progress report and invoice.
- i) Participated in weekly M-F outreach team coordination calls (3/5, 3/12, 3/19, 3/26).
- j) Attended monthly M-F AECOM team meeting (3/27).

Task 3. Project Definition

Task completed.

Task 4. Preliminary Engineering

4.1 15% Engineering

Fifteen Percent Engineering activities were completed by April 11, 2012.

4.11 Preliminary Engineering for Procurement

4.11.1 Surveys & Mapping (PSOMAS)

- a) No activity

4.11.2 Alignment & Typical Sections

- a) Coordinate with City of Fresno for design refinements and Veteran's Blvd.
- b) Continued design refinements and coordination with Merced Evergreen Cemetery (MEC) for alignment impacts. Developing concept for access.
- c) Continued coordination with Caltrans District 10 on Merced – Chowchilla and Arboleda modifications. Meet with Caltrans to confirm proposed design of Arboleda overcrossing with SR 99 relocation related work, Plainsburg overcrossing, E. Merced overcrossing, and straddle bents near SJ River.
- d) Awaiting feedback on Merced-to-Sandy-Mush document showing areas outside environmental footprint sent out for review to PMT.
- e) Continued to provide traffic analysis for Fresno Zoo.

4.11.3 Temporary Construction Facilities

No Activity.

4.11.4 Stations

No Activity

4.11.5 Bridges and Elevated Structures

- a) Continue feasibility analysis for Duck Slough alternatives for bridging and/or rerouting of slough.

4.11.6 Tunnels

There are no HST tunnels in the M-F Segment of CP1.

4.11.7 Buildings

There are no HST buildings in the M-F Segment of CP1.

4.11.8 Grading & Drainage/Earthwork

No Activity.

4.11.9 Hydrology & Hydraulics (Floodplain Impacts) and Drainage (Storm Water)

- a) Coordinate with USACE, CVFPB on 408/208.10/404/402/401 hydraulics/hydrology/permits. Ongoing meetings.
- b) Review water crossings (channels, etc.) against HST profile to determine if possible need for siphons. Coordination will need to start quickly with agencies upon identifying affected channels.

4.11.10 Utilities

- a) Continue to study Chowchilla to Merced third party utilities affected by abandoned SR-99 – waterway access.

4.11.11 Geotechnical (PARIKH)

No Activity.

4.11.12 Seismic Analyses

No application / no activity.

4.11.13 Right of Way (ROW)

No Activity.

4.11.14 Construction Cost Estimate

- a) Submitted cost estimates associated with improvements for Madera County requested roadway improvements (Ave 7,8,9,12,15 and 15 ½ modifications)

4.11.15 Roadway Plans

See CH2M Hill update below.

4.12 30% Systems

No Activity.

4.13 through 4.16 & 4.18 – Not Used in Current Scope of Work (SOW)

4.17 Capital Cost Estimate 30%

This activity is already covered under Task 4.11.14.

4.19 30% Design Submittals

4.19.1 Design Deliverables Required for Design-Build RFP

No activity.

4.19.2 Issue-for-Review Submittals

Completed.

4.19.3 Issue-for-Record Submittals

The Final “Issue-for-Record” submittals were completed on December 8th, 2011.

4.19.4 Final Electronic Files Submittals

No activity.

4.19.5 CP1A Support

- a) Coordinated with PMT on further CP1 refinements as needed.
- b) Provided engineering support for Golden State Boulevard (GSB) realignment options.

CH2M Hill Effort

- a) Continued engineering support of permit applications.
- b) Participated in MF Management Team meetings. Participated in weekly PMT Coordination Meetings.
- c) Coordinated meetings and teleconferences with AECOM.
- d) Coordinated meetings and teleconferences with PMT.
- e) Supported design change memoranda for Golden State Boulevard and Straddle Bents.
- f) Provide design refinement options for access, utility easement, and systems/operation.
- g) Provided alignment refinements and quantities for cost estimates for Sandy Mush Ave, Arboleda Avenue, Plainsburg Avenue, Avenue 9, Avenue 12, and Golden State Boulevard (pump station avoidance alternative).
- h) Supported profile vertical realignment for Hybrid 21 & Hybrid 24.
- i) Completed feasibility analysis for Duck Slough 404/408 impacts.
- j) Received Merced OH CAD files from District 10.
- k) Updated and submitted Final Project Report to Caltrans District 6.

Task 5. Project Level Environmental Impact Analysis

This task is complete.

Task 6. Station Area Development Planning

This task is complete.

Task 7. Prepare Draft and Final Project Level EIR/EIS Document

No Activity.

Task 8 Certification of EIR/EIS Documents and Permitting

Participation in Standing Weekly Meetings

- a) PMT/HSRA/AG/FRA Environmental Coordination Update.
- b) PMT/HSRA Environmental Coordination.
- c) Design change TWG.
- d) Mitigation Assurance Task Force.
- e) Section 106 Programmatic Agreement TWG.
- f) Resource agency meeting.
- g) Permission-to-enter meeting.

Design Changes

- a) Continued to evaluate design refinements, as needed, in accordance with PMT's anticipated change-control process.
- b) Conducted reconnaissance surveys from publicly accessible roads for the design refinements.

Permitting

- a) Conducted cultural and biological surveys at impact sites and mitigation sites.
- b) Supported work on permit applications, including continuous planning for execution of work in FY12/13 (e.g., for change requests). The team continued work on permit applications and supported planning for implementation of mitigation at five mitigation sites. Administrative draft of the 2081 permit application and the 1602 permit application were submitted to the California Department of Fish and Wildlife (CDFW). The team participated in a meeting to receive CDFW's review comments and worked on addressing those comments.

Cultural Resources

- a) Following discussions with the PMT and Authority, the Built Environment Treatment Plan addendum will be modified into two separate addenda; the Finding of Effect and Archaeological Treatment Plan addenda may not require further work at this time.
- b) Completed archaeological investigation of potentially HST-JL-H-002 site. No intact archaeological resources were identified and no further investigation is warranted. An Archaeological Evaluation report will be prepared for the PMT and Authority.
- c) Continued to coordinate with the PMT/Authority in the review of the Programmatic Agreement to identify areas for clarification, guidance, and refinement.
- d) Coordination with Caltrans District 6 cultural resources staff on their SHPO consultation needs and agreed to complete DPR forms for five additional properties.

Other Environmental

- a) Provided litigation support to the AG's office.
- b) Provided support to obtain permission to enter.

Planned Activities Next Period

Task 1 Project Management

- a) Prepare, review and process Monthly Progress Report, Schedule updates, Earned Value Report and invoice.
- b) Prepare for and manage a project monthly status meeting on April 24th at AECOM's Sacramento offices.
- c) Hold weekly meetings with PMT.
- d) Hold discussion with PMT and Authority regarding FY13/14 scope of services.
- e) Hold monthly meeting with PMO.
- f) Attend weekly Engineering meetings.
- g) Attend monthly ROW meetings.
- h) Submit weekly project updates.
- i) Attend weekly Environmental coordination conference calls.

Task 1.6 Special Projects

Civil Site Design/Planning for Merced Evergreen Cemetery

- a) Waiting for PMT direction.

Task 2 Public Outreach and Communications

- a) Organize and update Authority's Activate Direct Database for the M-F section.
- b) Manage and respond to stakeholder inquiries and monitor CommentSense.
- c) Identify and schedule priority stakeholder meetings.
- d) Submit weekly outreach report and meeting log to Authority.
- e) Complete February progress report (3/5).
- f) Conduct weekly M-F outreach team coordination calls (4/2, 4/9, 4/16, 4/23, 4/30).
- g) Participate in AECOM Management Team Weekly Conference Call (4/4, 4/18, 4/25).
- h) Submit CommentSense Monthly Report to Authority (4/15).
- i) Participate in Statewide Communications and Outreach Call (4/24).
- j) Attend monthly M-F team meeting (4/24).

CirclePoint

- a) Monitor and process stakeholder inquiries via CommentSense.
- b) Conduct public outreach related activities.
- c) Coordinate with the Fresno to Bakersfield and San Jose to Merced teams as necessary.
- d) Update and organize Authority's Activate Direct Database for M-F section.
- e) Update and refine the project mailing list.
- f) Participate in monthly M-F team meeting (4/24).

Task 4 Preliminary Engineering

- a) Provide engineering support for GSB realignment option and other design changes. Awaiting potential meeting with the City of Fresno.

- b) Continue coordination with Caltrans District 10 on E Merced OH project, Arboleda, and Plainsburg as needed.
- c) Provide support for COE's H&H and 408/208.10 permit requirements as needed. Coordinate with City of Fresno for design refinements and Veteran's Blvd.
- d) Coordinate with USACE, CVFPB on 408/208.10/404/402/401 hydraulics/hydrology/permits.
- e) Review watercrossings (channels, etc.) against HST profile to determine if possible need for siphons.
- f) Coordination will need to start quickly with agencies upon identifying affected channels.
- g) Continue support of 3rd party master agreements.
- h) Continue coordination with City of Merced, as needed.
- i) Continue coordination with City of Fresno, as needed. Continue support for CP1A inquiries from PMT, Authority and AG.
- j) Continue 3rd Party design refinement effort.
- k) Continue design refinement and coordination with Merced Evergreen Cemetery (MEC) for alignment impacts. Developing concept for access.
- l) Continue feasibility analysis for Duck Slough alternatives for bridging and/or rerouting of slough.
- m) Awaiting feedback on Merced to Sandy-Mush document showing areas outside environmental footprint sent out for review to PMT.

- n) Continue to study Chowchilla-to-Merced third-party utilities affected by abandoned SR-99 – waterway access.

- o) Meet with Caltrans to confirm proposed design of Arboleda overcrossing with SR 99 relocation related work, Plainsburg overcrossing, E. Merced overcrossing, and straddle bents near SJ River.
- p) Continue to provide traffic analysis for Fresno Zoo.

CH2M Hill Effort

- a) Continue coordination with District 10 on the ongoing Caltrans projects between Downtown Merced and north of Chowchilla.
- b) Continue design alternatives analysis.
- c) Continue to support PMT for design alternatives at Duck Slough.
- d) Continue to assist as needed on review of H&H Reports.
- e) Support Authority in Merced property owner meetings.
- f) Continue to refine Golden State Boulevard and HST crossing as needed.
- g) Continue to support HST profile/alignment refinement.

Task 5 Environmental Review Work

- a) No activity anticipated.

Task 6 Station Area Development

- a) No activity anticipated.

Task 7 Prepare Project Level Draft and Final EIR/EIS Documents

- a) No activity anticipated.

Task 8 Certification of EIR/EIS Documents and Permitting

- a) Submit design refinement memoranda for all Phase 1 and 2 memos to the PMT. Address PMT, Authority, and FRA comments. Conduct field work for design refinements. Revise memoranda, as needed, in accordance with PMT's anticipated change-control process.
- b) Revise the addendum for the Section 106 BETP document for the downtown Fresno area.
- c) Continue pre-construction archaeological surveys and mitigation measures, in accordance with the Built Environment and Archaeological Treatment Plans.
- d) Support permitting efforts (e.g., respond to agency comments).
- e) Support and participate in consultation meetings with permitting agencies and internal meetings with HSRA, AG, FB, FRA, and PMT.
- f) Support Mitigation Assurance Task Force meetings.
- g) Commence work on an administrative record for permit applications.
- h) Commence work on CEQA/NEPA documents for Dutchman Creek and Grasslands.
- i) Provide litigation support.
- j) Continue to provide support for permission-to-enter.

Schedule and work product progress

Our Outreach effort continues to provide work sessions with the staff of each City, County, Water District and various other stakeholders to gain mutually acceptable solutions regarding mitigation of environmental impacts resulting from the Project. It is anticipated that permit applications and the mitigation plan will be submitted to regulatory agencies in early 2013.

| AECOM | | Section Summary Draft Schedule | | | | | | | | Merced to Fresno Section March 2013 | | | | | | | | | | | |
|--|-----------|--------------------------------|---------------------|--------------------------------|-----------------------------|-------------------------|---------------------------|-----------------------|----------------------|--|------|------|------|------|------|--|--|--|--|--|--|
| | | Planned Start Date | Planned Finish Date | Actual/Forecast Start Date | Actual/Forecast Finish Date | Total Planned To Date % | Total Physical % Complete | FY Planned % Complete | FY Actual % Complete | 2009 | 2010 | 2011 | 2012 | 2013 | 2014 | | | | | | |
| Task 1 - Project Management | | | | | | | | | | | | | | | | | | | | | |
| 1 - Project Management | 01-Jul-09 | 28-Jun-13 | 01-Jul-09 A | 28-Jun-13 | 94 | 94 | 75 | 75 | | | | | | | | | | | | | |
| Task 2 - Public Participation Program | | | | | | | | | | | | | | | | | | | | | |
| 2 - Public Participation Program | 01-Jul-09 | 25-Nov-11 | 01-Jul-09 A | 28-Jun-13 | 100 | 94 | 0 | 0 | | | | | | | | | | | | | |
| Task 3 - Project Definition / Alternatives Analysis | | | | | | | | | | | | | | | | | | | | | |
| 3 - Project Definition/Alternatives Analysis | 12-May-09 | 07-Sep-10 | 12-May-09 A | 07-Sep-10 A | 100 | 100 | 0 | 0 | | | | | | | | | | | | | |
| 3.1 - Notice of Preparation/Notice of Intent | 27-Jul-09 | 30-Nov-09 | 27-Jul-09 A | 30-Nov-09 A | 100 | 100 | 0 | 0 | | | | | | | | | | | | | |
| 3.2 - Project Scoping | 31-Aug-09 | 23-Oct-09 | 31-Aug-09 A | 23-Oct-09 A | 100 | 100 | 0 | 0 | | | | | | | | | | | | | |
| 3.3 - Refine Project Purpose & Need | 31-Aug-09 | 27-Jan-10 | 31-Aug-09 A | 27-Jan-10 A | 100 | 100 | 0 | 0 | | | | | | | | | | | | | |
| 3.4 - Alternatives Analysis | 12-May-09 | 07-Sep-10 | 12-May-09 A | 07-Sep-10 A | 100 | 100 | 0 | 0 | | | | | | | | | | | | | |
| 3.4.5 - Preliminary AA | 06-Jan-10 | 09-Apr-10 | 06-Jan-10 A | 09-Apr-10 A | 100 | 100 | 0 | 0 | | | | | | | | | | | | | |
| 3.4.7 - AA Board Meeting | 18-Nov-09 | 08-Apr-10 | 18-Nov-09 A | 08-Apr-10 A | 100 | 100 | 0 | 0 | | | | | | | | | | | | | |
| 3.4.9 - Supplementary AA | 01-Jun-10 | 10-Aug-10 | 01-Jun-10 A | 10-Aug-10 A | 100 | 100 | 0 | 0 | | | | | | | | | | | | | |
| Task 4 - Preliminary Engineering | | | | | | | | | | | | | | | | | | | | | |
| 4 - Preliminary Engineering | 31-Aug-09 | 29-Jun-12 | 31-Aug-09 A | 27-Dec-13 | 100 | 83 | 0 | 75 | | | | | | | | | | | | | |
| 4.9.7 Final 15% Design Submittal Full Package | | | 11-Aug-10 A | 18-Jul-11 A | 100 | 100 | 0 | 0 | | | | | | | | | | | | | |
| 4.19.1 Draft Procurement Contract Package 1 | 11-Apr-11 | 08-Dec-11 | 01-Jul-11 A | 09-Dec-11 A | 100 | 100 | 0 | 0 | | | | | | | | | | | | | |
| 4.19.2 Final Procurement Contract Package 1 | 09-Dec-11 | 09-Jan-12 | 12-Dec-11 A | 22-Feb-12 A | 100 | 100 | 0 | 0 | | | | | | | | | | | | | |
| Task 5 - EIR / EIS Analysis | | | | | | | | | | | | | | | | | | | | | |
| 5 - EIR/EIS Analysis | 20-Apr-10 | 09-Nov-11 | 20-Apr-10 A | 29-Jun-12 A | 100 | 100 | 0 | 0 | | | | | | | | | | | | | |
| 5.2 - Technical Reports | 20-Apr-10 | 06-Jun-11 | 20-Apr-10 A | 29-Jun-12 A | 100 | 100 | 0 | 0 | | | | | | | | | | | | | |
| 5.3 - EIR/EIS Baseline / Affected Environmental Analysis | 20-Apr-10 | 09-Jun-11 | 20-Apr-10 A | 20-Jun-11 A | 100 | 100 | 0 | 0 | | | | | | | | | | | | | |
| Task 6 - Station Area Planning | | | | | | | | | | | | | | | | | | | | | |
| 6 - Station Area Planning | 30-Apr-10 | 26-Apr-11 | 30-Apr-10 A | 29-Jul-11 A | 100 | 100 | 0 | 0 | | | | | | | | | | | | | |
| Task 7 - Draft and Final EIR / EIS | | | | | | | | | | | | | | | | | | | | | |
| 7 - Draft & Final EIR/EIS | 15-Jun-10 | 23-Jan-12 | 15-Jun-10 A | 27-May-12 A | 100 | 100 | 0 | 0 | | | | | | | | | | | | | |
| 7.1 - Prepare Administrative Draft EIR/EIS | 01-Nov-10 | 04-May-11 | 15-Jun-10 A | 06-May-11 A | 100 | 100 | 0 | 0 | | | | | | | | | | | | | |
| 7.2 - Prepare Draft EIR/EIS and Public Review | 16-Jun-11 | 02-Sep-11 | 02-Aug-11 A | 13-Oct-11 A | 100 | 100 | 0 | 0 | | | | | | | | | | | | | |
| 7.3 - Prepare Draft Final EIR/EIS | 24-Aug-11 | 04-Oct-11 | 14-Oct-11 A | 15-Dec-11 A | 100 | 100 | 0 | 0 | | | | | | | | | | | | | |
| 7.6 - Final EIR/EIS | 05-Oct-11 | 22-Dec-11 | 16-Dec-11 A | 27-May-12 A | 100 | 100 | 0 | 0 | | | | | | | | | | | | | |
| 7.6.11 Board Certifies Final EIR/EIS | | 30-Dec-11 | | 03-May-12 A | 100 | 100 | 0 | 0 | | | | | | | | | | | | | |
| Task 8 - Certification of EIR/EIS and ROD | | | | | | | | | | | | | | | | | | | | | |
| 8 - Certification of EIR/EIS & ROD | 02-Jan-12 | 21-Feb-12 | 27-Feb-12 A | 18-Sep-12 A | 100 | 100 | 0 | 0 | | | | | | | | | | | | | |
| 8.4 - Permitting | 06-Apr-11 | 16-Sep-13 | 06-Apr-11 A | 13-Dec-13 | 81 | 74 | 75 | 75 | | | | | | | | | | | | | |
| Task 10 - ROW Preservation and Acquisition | | | | | | | | | | | | | | | | | | | | | |
| 10 - ROW Activities | 29-Nov-10 | 28-Jun-13 | 01-Jul-11 A | 27-Dec-13 | 90 | 70 | 75 | 75 | | | | | | | | | | | | | |
| Total Section Progress Complete | | | | | | | | | | | | | | | | | | | | | |
| Total Section Progress Complete | 05-Nov-08 | 28-Jun-13 | 05-Nov-08 A | 27-Dec-13 | 95 | 85 | 75 | 75 | | | | | | | | | | | | | |
| Project ID: MF_AECOM | | Project Start: 05-Nov-08 | | Section Summary Draft Schedule | | | | Page 1 of 1 | | | | | | | | | | | | | |
| Layout Name: MF AECOM - RC PSS - R2 (AECOM) | | Project Finish: 30-Dec-13 | | | | | | 10-Apr-13 | | | | | | | | | | | | | |
| | | Data Date: 30-Mar-13 | | | | | | | | | | | | | | | | | | | |