

## Progress Report for December 2012

### MERCED - FRESNO SUBSECTION

#### Task 9 & 10 Progress Report

Segment 1 limits are defined from Ashlan Avenue to Avenue 7. (Fresno & Madera County)

Segment 2 limits are defined from Avenue 7 to Avenue 17. (Madera County)

#### *Major / Key Issues and Areas of Concern*

##### SCOPE:

**Right-of-Way (ROW):** Approximately 120 parcels of ROW are required for CP1 between Ashlan Avenue and Avenue 7 (Segment 1), including the ROW required for future Veterans Boulevard Phase 1 and the relocation of Golden State Boulevard to the north of Herndon Avenue. Additional preliminary ROW activities are underway for the CP1 Extension Option (Segment 2) from Avenue 7 to Avenue 17. Approximately 115 parcels are within this segment. ROW Engineering and Appraisal Activities progress to date include:

1. ROW boundary surveys (122/122 parcels completed for Segment 1, 100/116 parcels still continues for Segment 2);
2. ROW appraisal maps (~43 drawings at ~95% completion level Segment 1, ~41 drawings at 95% completion level for Segment 2);
3. ROW Title Reports (received 122/122 for Segment 1 parcels and 109/116 for Segment 2 parcels);
4. Initial Site Assessments (Haz-Mat investigations – started Segment 2 ISA Phase 1); Additional out of scope ISA Phase 1 is anticipated due to “parent” versus “children” parcels identification during the appraiser phase. The determination that adjacent and adjoining land is also owned by the same owners that are directly impacted by the CHSR train. This information is required as part of the appraisal report.
5. Received Appraisals for 41 parcels (Segment 1). See Appraisal table below for progress.
6. Assisting with the Cultural and Biological PTE as part of the ROW. (out of scope), but we are proceeding as approved by the Authority/PMT.
7. AECOM/CH2M Hill and BRI Program Management task, which is assisting the CHSRA ROW department on addressing guidance, policies, and procedures, is out of scope but is approved by Authority/PMT. .
8. Procurement support activities using modified appraisal maps for procurement exhibits. (Out of Scope).
9. Appraise 5 EA for proposed mitigation sites. (Out of Scope).
10. Need to update priority list from Authority/PMT with the addition of UPRR, mitigation land, procurement package, etc. Every addition is categorized as priority by Authority/PMT representatives. Need to re-define and re-categorize priority rankings.
11. Reviewing, supporting, and providing feedback to the Acquisition plans performed by Paragon Partners. (Out of Scope) AECOM is scoped to perform the appraisal component of this ROW

task. Acquisition Planning should be part of the acquisition component which is a separate ROW contract.

12. Appraise UPRR parcels. (Out of Scope).

Row Labels	Count of Appraisals	Count of NODA Request Approved	Count of NODA Sent	Count of Inspection Completed	Count of Draft AG Appraisal Complete	Count of External Review Complete	Count of Transmittal to AECOM complete
<b>AECOM</b>	<b>240</b>	<b>116</b>	<b>116</b>	<b>99</b>	<b>87</b>	<b>49</b>	<b>41</b>
1 (Ashlan-Ave 7)	124	116	116	99	87	49	41
2 (Ave 7-Ave 17)	116						

**SCHEDULE:**

**Right-of-Way (ROW):** The schedule of activities requires the “Notice of Determination to Appraise” (NODA) to be sent out to property owners and/or residents prior to the initiation of appraisal work. The Authority through a rigorous process developed the NODA in the latter part of FY11/12, later than had been anticipated by that year’s AWP. Further, permission to utilize the NODA is given on a parcel-by-parcel basis with the parcels being given clearance through another rigorous approval process which incorporates concurrence from the City of Fresno, when the parcel lies within the City. For these more-complex-than-initially-anticipated reasons, the clearances to issue NODAs were significantly delayed in FY11/12 for numerous parcels resulting in approximately 122 of these parcels in Segment 1 not having their appraisal work completed as initially anticipated within FY11/12. This delay is from approximately 4/2012 to 5/2012 which created a delay of approximately 8-9 weeks in the appraisal tasks. These approval-clearance delays have continued into the current FY12/13 impacting the schedule of delivery of the appraisal packages needed for CP1. NODAs are being granted for select parcels. Subsequently, the ROW team is working diligently to recapture the schedule.

Authority “Holds” such as the Golden State Boulevard between future Veterans Boulevard and Herndon were approved for release by Authority ROW manager on 12/26/2012.

The addition of mitigation parcels (5 EA) to address permitting requirements will impact schedule due to re-directing of efforts to this new priority from other previous priorities.

Engineering refinements will continue to impact ROW schedule. Without final improvement design details (horizontal and vertical), the ability to perform ROW appraisal becomes challenging.

Continued Authority NODA approval process is impacting ROW schedule. Duration from NODA submittal to approval has been between 4-8 weeks.

**BUDGET:**

**Right-of-Way (ROW):**

The delay of activities has impacted the rate at which the Team has expended the planned budget, with expenditures amounting to only 35% of the anticipated budget for the first month of FY 12/13. The Team will use every opportunity to efficiently and effectively accelerate work to recover the schedule and over the next few months bring the cumulative expenditures back in line with the original budget. However, the following areas of concern persist with the budget to date:

1. A to-be-determined amount of the unexpended budget of \$1.7M, which was allocated for the 122 parcels programmed but not completed within FY 11/12 due to the above-referenced delays, may be needed in addition to the fully identified FY 12/13 AWP budget to complete the CP1 ROW requirements prior to the initiation of construction. AECOM will continue to efficiently process all parcels to stretch FY12/13 funding to cover the uncompleted FY11/12 parcels along with the current FY12/13 ROW requirements. If these vigorous efforts are unable to fully cover the minimized, unfinished scope of work, then consideration should be given to increase the budget through the Change Request process to complete the required scope of work.
2. The Authority utilized BRI from the AECOM/CH2M Hill ROW Team to assist the Authority's program management in FY 11/12 (consuming \$275K of that year's budget, which was initially programmed for parcel appraisal work only). The Authority is continuing to utilize BRI for supplementing the Authority's ROW program management within FY 12/13. The AECOM/CH2M Hill ROW Team will do its best to efficiently incorporate these out-of-scope requirements within the FY12/13 AWP; but if these extra costs are unable to be fully covered, then consideration should be given to increase the budget through the Change Request process to cover the remainder of the required scope of work.
3. On Nov 19<sup>th</sup>, the Authority directed the M-F ROW team to include mitigation parcels as part of the ROW task. This additional task will impact the budget as it relates to deliverable prioritizing. Pending Authority/PMT official approval of a Change Request to begin this additional out-of-scope ROW work.
4. As we address these additional out-of-scope tasks, our Team will continue to use existing authorized LNTP budget. As a result of this budgeting approach, other planned scope of work could be delayed due to lack of funding.

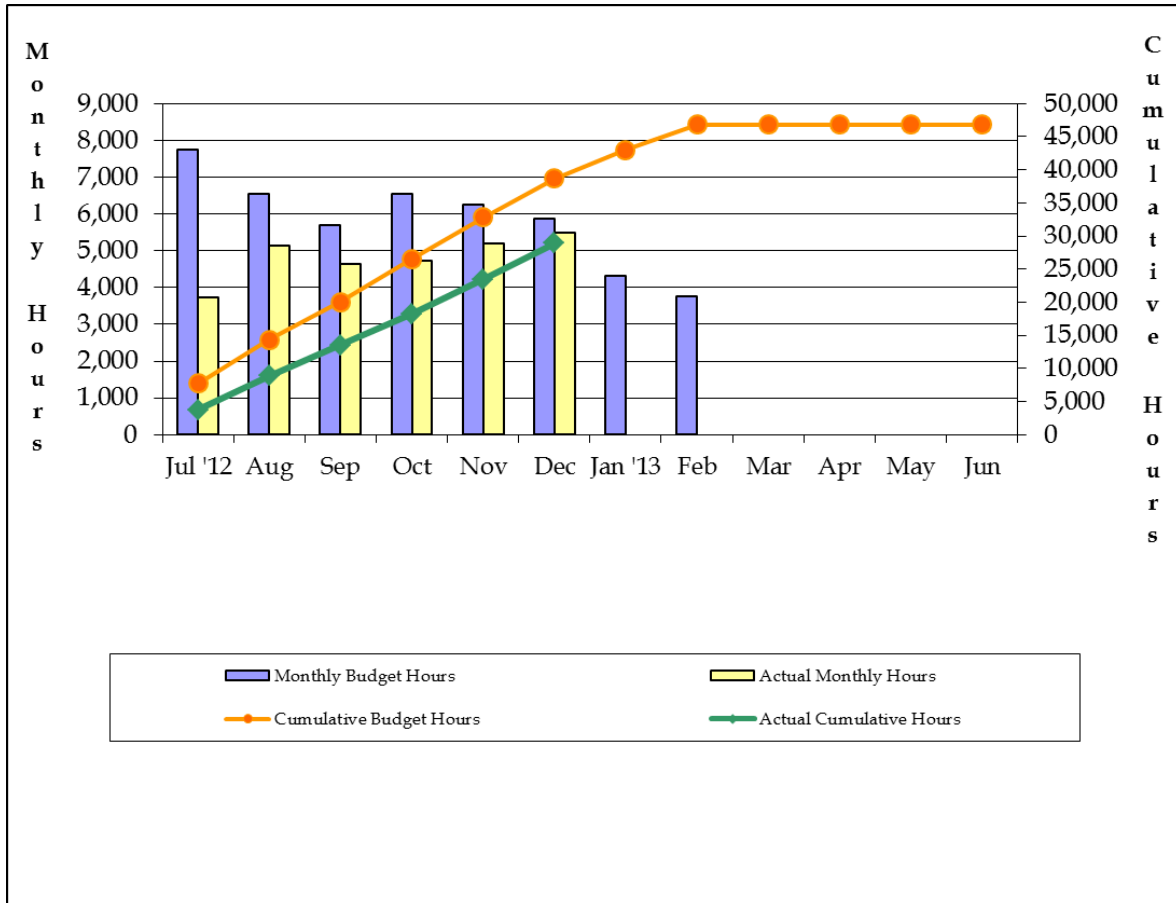
### ***Financial Reporting***

**Budget:** On July 27<sup>th</sup> the Limited Notice to Proceed 1 (LNTP-01) was issued for Task 10 for \$2,350,000. On November 16<sup>th</sup> Limited Notice to Proceed 1A (LNTP-01A) was issued for Task 10 for an additional \$1,778,378 for a total value of \$4,128,378. Per the AWP submitted June 21<sup>st</sup>, the LNTP-01 & LNTP-01A budgets issued represent 75% of the planned AWP Scope of work, if there are no changes to the schedule or to the priorities of the scoped tasks. It is anticipated that the remaining authorized, yet unexpended, budget will be exhausted in the second half of February 2013. Budgeted hours and dollars are based on submitted AWP. Currently, Change Request #158, which is in review with the Change Request Committee, revises the scope of services and schedule to meet the priorities defined by the Authority staff.

### **Fiscal Year Hours**

The staff hours worked for Task 10 total to 5,493 labor hours for the month of December which was 6.7% below the monthly budgeted hours 5,885 for December. Cumulative labor hours (28,908) from July 1st to date are 25.3% below the budgeted labor hours (38,702) for the fiscal year to date.

**Hours Summary FY 2012 - 2013**

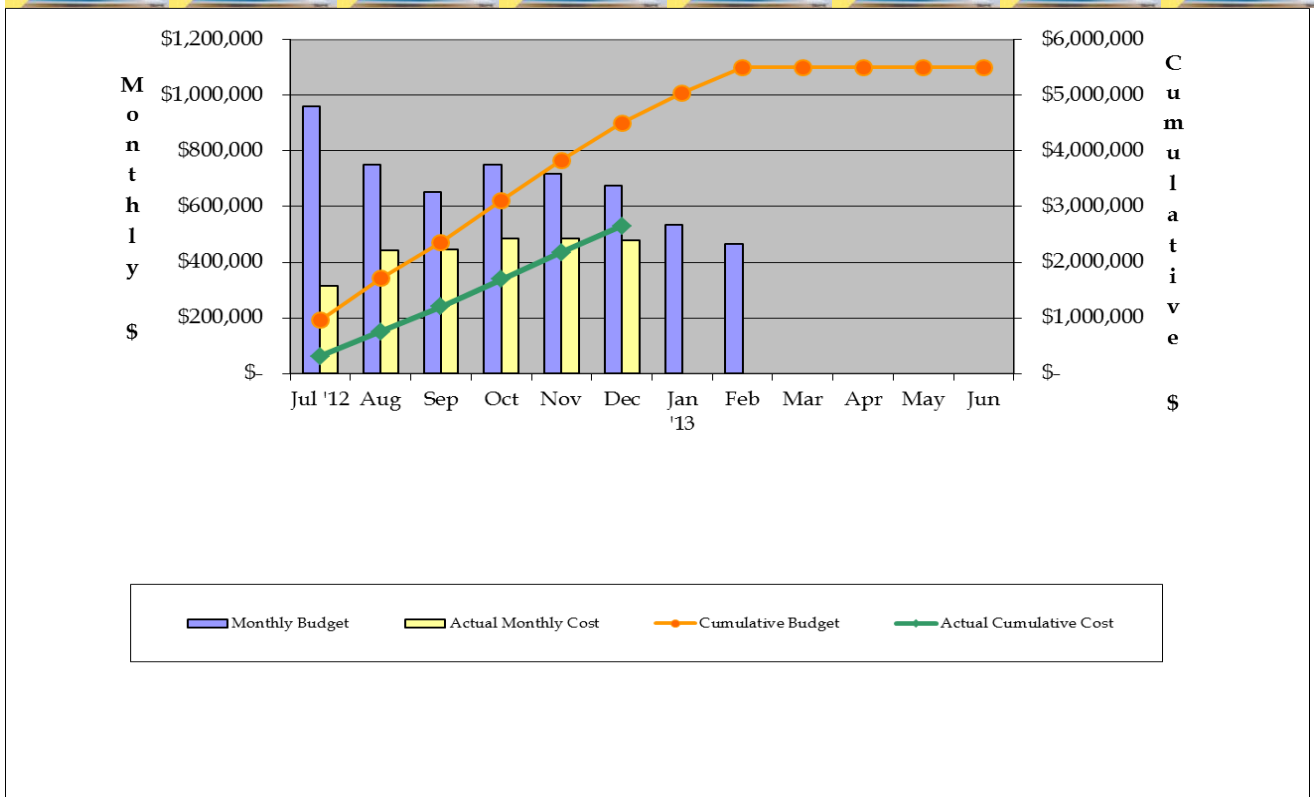


**Fiscal Year Dollars**

Task 10 expenditures for the month of December were \$477,950, which was 29% below the budget of \$675,032. Cumulative dollars (\$2,651,455) from July 1 to date were approximately 41% below budget (\$4,501,323) for the fiscal year.

**Cost Summary FY 2012 – 2013**

**Merced - Fresno Section**  
**AECOM Transportation ♦ CH2M HILL Progress Report 68.3 –December 2012**



Fiscal Year Total Hours / Dollars

Section:	Merced to Fresno												
Regional Consultant	AECOM												
Hour Summary	FY 2012 -2013												
<b>HOURS</b>													
Budgeted	Total	July	August	September	October	November	December	January	February	March	April	May	June
1 Project Management	9,318	966	1,005	765	778	745	711	778	677	711	739	772	671
2 Public / Agency Participation	5,149	455	475	396	451	431	412	451	392	412	431	451	392
3 Alternative Analysis	-	-	-	-	-	-	-	-	-	-	-	-	-
<b>4 Engineering</b>													
15% Preliminary Engineering	-	-	-	-	-	-	-	-	-	-	-	-	-
30% Preliminary Engineering	21,916	2,761	2,708	2,355	2,116	1,734	1,644	1,556	1,353	1,421	1,445	1,510	1,313
5 EIR / EIS Analysis	-	-	-	-	-	-	-	-	-	-	-	-	-
6 Station Area Planning	-	-	-	-	-	-	-	-	-	-	-	-	-
7 Draft & Final EIR/EIS	-	-	-	-	-	-	-	-	-	-	-	-	-
8 Certification of EIR/EIS & ROD	23,048	2,574	2,482	2,158	1,868	1,786	1,705	1,868	1,624	1,705	1,786	1,868	1,624
9 ROW EIR/EIS Process	-	-	-	-	-	-	-	-	-	-	-	-	-
10 ROW Activities	46,802	7,755	6,551	5,697	6,551	6,266	5,885	4,331	3,766	-	-	-	-
ODC ODCs	-	-	-	-	-	-	-	-	-	-	-	-	-
<b>Totals</b>	<b>106,233</b>	<b>14,511</b>	<b>13,221</b>	<b>11,371</b>	<b>11,764</b>	<b>10,962</b>	<b>10,357</b>	<b>8,984</b>	<b>7,812</b>	<b>4,249</b>	<b>4,401</b>	<b>4,601</b>	<b>4,000</b>
26,554													
Actual / Forecast	Total	July	August	September	October	November	December	January	February	March	April	May	June
1 Project Management	8,214	471	815	328	1,010	564	678	778	677	711	739	772	671
2 Public / Agency Participation	4,785	230	734	188	303	148	653	451	392	412	431	451	392
3 Alternative Analysis	-	-	-	-	-	-	-	-	-	-	-	-	-
<b>4 Engineering</b>													
15% Preliminary Engineering	-	-	-	-	-	-	-	-	-	-	-	-	-
30% Preliminary Engineering	13,123	552	716	685	882	1,149	541	1,556	1,353	1,421	1,445	1,510	1,313
5 EIR / EIS Analysis	-	-	-	-	-	-	-	-	-	-	-	-	-
6 Station Area Planning	-	-	-	-	-	-	-	-	-	-	-	-	-
7 Draft & Final EIR/EIS	-	-	-	-	-	-	-	-	-	-	-	-	-
8 Certification of EIR/EIS & ROD	25,936	2,375	3,685	1,417	3,965	1,309	2,710	1,868	1,624	1,705	1,786	1,868	1,624
9 ROW EIR/EIS Process	-	-	-	-	-	-	-	-	-	-	-	-	-
10 ROW Activities	37,005	3,727	5,128	4,629	4,738	5,193	5,493	4,331	3,766	-	-	-	-
ODC ODCs	-	-	-	-	-	-	-	-	-	-	-	-	-
<b>Monthly Totals</b>	<b>89,063</b>	<b>7,355</b>	<b>11,078</b>	<b>7,246</b>	<b>10,898</b>	<b>8,363</b>	<b>10,075</b>	<b>8,984</b>	<b>7,812</b>	<b>4,249</b>	<b>4,401</b>	<b>4,601</b>	<b>4,000</b>
<b>Cumulative Totals</b>		<b>7,355</b>	<b>18,433</b>	<b>25,680</b>	<b>36,578</b>	<b>44,941</b>	<b>55,016</b>	<b>64,000</b>	<b>71,812</b>	<b>76,061</b>	<b>80,462</b>	<b>85,063</b>	<b>89,063</b>
Cost Summary	FY 2012 -2013												
<b>DOLLARS</b>													
Budgeted	Total	July	August	September	October	November	December	January	February	March	April	May	June
1 Project Management	\$1,360,983	\$150,668	\$156,373	\$114,159	\$111,785	\$106,925	\$102,065	\$111,785	\$97,205	\$102,065	\$104,230	\$108,968	\$94,755
2 Public / Agency Participation	\$564,941	\$50,219	\$52,502	\$43,693	\$49,365	\$47,218	\$45,072	\$49,365	\$42,926	\$45,072	\$47,218	\$49,365	\$42,926
3 Alternative Analysis	\$0	\$0	\$0	\$0	\$0	\$0	\$0	\$0	\$0	\$0	\$0	\$0	\$0
<b>4 Engineering</b>													
15% Preliminary Engineering	\$0	\$0	\$0	\$0	\$0	\$0	\$0	\$0	\$0	\$0	\$0	\$0	\$0
30% Preliminary Engineering	\$3,067,701	\$382,010	\$372,224	\$330,624	\$295,258	\$244,585	\$231,956	\$220,930	\$192,113	\$201,718	\$201,819	\$210,992	\$183,472
5 EIR / EIS Analysis	\$0	\$0	\$0	\$0	\$0	\$0	\$0	\$0	\$0	\$0	\$0	\$0	\$0
6 Station Area Planning	\$0	\$0	\$0	\$0	\$0	\$0	\$0	\$0	\$0	\$0	\$0	\$0	\$0
7 Draft & Final EIR/EIS	\$0	\$0	\$0	\$0	\$0	\$0	\$0	\$0	\$0	\$0	\$0	\$0	\$0
8 Certification of EIR/EIS & ROD	\$2,802,166	\$315,746	\$295,680	\$257,671	\$227,740	\$218,025	\$208,309	\$227,740	\$198,592	\$208,308	\$218,023	\$227,740	\$198,592
9 ROW EIR/EIS Process	\$0	\$0	\$0	\$0	\$0	\$0	\$0	\$0	\$0	\$0	\$0	\$0	\$0
10 ROW Activities	\$5,500,002	\$958,340	\$749,578	\$651,807	\$749,578	\$716,988	\$675,032	\$534,177	\$464,502	\$0	\$0	\$0	\$0
ODC ODCs	\$0	\$0	\$0	\$0	\$0	\$0	\$0	\$0	\$0	\$0	\$0	\$0	\$0
<b>Totals</b>	<b>\$13,295,793</b>	<b>\$1,856,983</b>	<b>\$1,626,357</b>	<b>\$1,397,954</b>	<b>\$1,433,726</b>	<b>\$1,333,741</b>	<b>\$1,262,434</b>	<b>\$1,143,997</b>	<b>\$995,338</b>	<b>\$557,163</b>	<b>\$571,290</b>	<b>\$597,065</b>	<b>\$519,745</b>
\$3,109,303													
Actual / Forecast	Total	July	August	September	October	November	December	January	February	March	April	May	June
1 Project Management	\$1,246,469	\$76,042	\$120,793	\$110,119	\$138,193	\$84,596	\$97,718	\$111,785	\$97,205	\$102,065	\$104,230	\$108,968	\$94,755
2 Public / Agency Participation	\$460,766	\$20,548	\$30,424	\$25,231	\$30,396	\$13,586	\$63,709	\$49,365	\$42,926	\$45,072	\$47,218	\$49,365	\$42,926
3 Alternative Analysis	\$0	\$0	\$0	\$0	\$0	\$0	\$0	\$0	\$0	\$0	\$0	\$0	\$0
<b>4 Engineering</b>													
15% Preliminary Engineering	\$0	\$0	\$0	\$0	\$0	\$0	\$0	\$0	\$0	\$0	\$0	\$0	\$0
30% Preliminary Engineering	\$1,866,256	\$77,123	\$161,513	\$117,237	\$151,860	\$55,238	\$92,241	\$220,930	\$192,113	\$201,718	\$201,819	\$210,992	\$183,472
5 EIR / EIS Analysis	\$0	\$0	\$0	\$0	\$0	\$0	\$0	\$0	\$0	\$0	\$0	\$0	\$0
6 Station Area Planning	\$0	\$0	\$0	\$0	\$0	\$0	\$0	\$0	\$0	\$0	\$0	\$0	\$0
7 Draft & Final EIR/EIS	\$0	\$0	\$0	\$0	\$0	\$0	\$0	\$0	\$0	\$0	\$0	\$0	\$0
8 Certification of EIR/EIS & ROD	\$3,202,018	\$247,289	\$402,190	\$323,325	\$456,874	\$159,726	\$333,619	\$227,740	\$198,592	\$208,308	\$218,023	\$227,740	\$198,592
9 ROW EIR/EIS Process	\$0	\$0	\$0	\$0	\$0	\$0	\$0	\$0	\$0	\$0	\$0	\$0	\$0
10 ROW Activities	\$3,649,975	\$313,380	\$443,485	\$446,662	\$485,870	\$483,949	\$477,950	\$534,177	\$464,502	\$0	\$0	\$0	\$0
ODC ODCs	\$0	\$0	\$0	\$0	\$0	\$0	\$0	\$0	\$0	\$0	\$0	\$0	\$0
<b>Monthly Totals</b>	<b>10,425,484</b>	<b>\$734,382</b>	<b>\$1,158,405</b>	<b>\$1,022,574</b>	<b>\$1,263,193</b>	<b>\$797,095</b>	<b>\$1,065,237</b>	<b>\$1,143,997</b>	<b>\$995,338</b>	<b>\$557,163</b>	<b>\$571,290</b>	<b>\$597,065</b>	<b>\$519,745</b>
<b>Cumulative Totals</b>		<b>\$734,382</b>	<b>1,892,787</b>	<b>2,915,361</b>	<b>4,178,554</b>	<b>4,975,649</b>	<b>6,040,886</b>	<b>7,184,883</b>	<b>8,180,221</b>	<b>8,737,384</b>	<b>9,308,674</b>	<b>9,905,739</b>	<b>10,425,484</b>
Forecast in RED													

**Program Total Hours / Dollars**

Hour Summary	FY 2006 -2014									
<b>HOURS</b>										
<b>Budgeted</b>	<b>Total</b>	<b>2006/07</b>	<b>2007/08</b>	<b>2008/09</b>	<b>2009/10</b>	<b>2010/11</b>	<b>2011/12</b>	<b>2012/13</b>	<b>2013/14</b>	
1 Project Management	37,910	410	145	1,200	3,784	6,276	7,807	9,318	8,970	
2 Public / Agency Participation	26,272	143	1,163	3,372	2,277	3,242	6,007	5,149	4,919	
3 Alternative Analysis	12,144	355	53	5,700	5,343	694	-	-	-	
<b>4 Engineering</b>										
15% Preliminary Engineering	70,741	249	-	3,000	18,089	48,125	1,278	-	-	
30% Preliminary Engineering	163,250	-	-	-	-	-	38,433	21,916	102,901	
5 EIR / EIS Analysis	131,642	1,020	532	7,000	28,134	68,728	26,229	-	-	
6 Station Area Planning	4,193	-	-	1,330	2,294	570	-	-	-	
7 Draft & Final EIR/EIS	34,551	-	-	-	1,290	9,306	23,955	-	-	
8 Certification of EIR/EIS & ROD	46,687	-	-	-	-	30	12,153	23,048	11,456	
9 ROW EIR/EIS Process	5,446	-	-	-	-	42	5,404	-	-	
10 ROW Activities	74,834	-	-	-	-	-	28,032	46,802	-	
ODC ODCs	-	-	-	-	-	-	-	-	-	
<b>Totals</b>	<b>607,670</b>	<b>2,177</b>	<b>1,892</b>	<b>21,602</b>	<b>61,211</b>	<b>137,012</b>	<b>149,297</b>	<b>106,233</b>	<b>128,246</b>	
<b>Actual / Forecast</b>										
<b>Total</b>	<b>2006/07</b>	<b>2007/08</b>	<b>2008/09</b>	<b>2009/10</b>	<b>2010/11</b>	<b>2011/12</b>	<b>2012/13</b>	<b>2013/14</b>		
1 Project Management	35,490	410	145	785	2,953	6,276	7,739	8,214	8,970	
2 Public / Agency Participation	26,673	143	1,163	3,082	3,063	3,242	6,277	4,785	4,919	
3 Alternative Analysis	16,594	355	53	4,287	11,206	694	-	-	-	
<b>4 Engineering</b>										
15% Preliminary Engineering	62,837	249	-	271	12,914	48,125	1,278	-	-	
30% Preliminary Engineering	148,060	-	-	-	-	-	32,036	13,123	102,901	
5 EIR / EIS Analysis	137,986	1,020	532	1,743	33,768	68,728	32,197	-	-	
6 Station Area Planning	3,093	-	-	552	1,972	570	-	-	-	
7 Draft & Final EIR/EIS	41,749	-	-	-	-	9,306	32,444	-	-	
8 Certification of EIR/EIS & ROD	44,873	-	-	-	-	30	7,451	25,936	11,456	
9 ROW EIR/EIS Process	5,446	-	-	-	-	42	5,404	-	-	
10 ROW Activities	65,037	-	-	-	-	-	28,032	37,005	-	
ODC ODCs	-	-	-	-	-	-	-	-	-	
<b>Monthly Totals</b>	<b>587,839</b>	<b>2,177</b>	<b>1,892</b>	<b>10,719</b>	<b>65,874</b>	<b>137,012</b>	<b>152,856</b>	<b>89,063</b>	<b>128,246</b>	
<b>Cumulative Totals</b>		<b>2,177</b>	<b>4,069</b>	<b>14,788</b>	<b>80,663</b>	<b>217,675</b>	<b>370,530</b>	<b>459,593</b>	<b>587,839</b>	

**Merced - Fresno Section  
AECOM Transportation ♦ CH2M HILL**

**Progress Report 68.3 –December 2012**

Cost Summary		FY 2006-2014								
<b>DOLLARS</b>										
Budgeted	Total	2006/07	2007/08	2008/09	2009/10	2010/11	2011/12	2012/13	2013/14	
<b>1 Project Management</b>	\$5,722,693	\$96,458	\$35,642	\$166,087	\$526,999	\$1,021,639	\$1,156,364	\$1,360,983	\$1,358,521	
<b>2 Public / Agency Participation</b>	\$3,239,070	\$29,776	\$188,260	\$341,001	\$366,931	\$355,898	\$861,211	\$564,941	\$531,053	
<b>3 Alternative Analysis</b>	\$2,079,159	\$33,819	\$8,395	\$522,722	\$1,450,484	\$63,739	\$0	\$0	\$0	
<b>4 Engineering</b>										
15% Preliminary Engineering	\$8,210,722	\$51,166	\$0	\$60,393	\$1,858,126	\$6,051,827	\$189,210	\$0	\$0	
30% Preliminary Engineering	\$22,690,765	\$0	\$0	\$0	\$0	\$0	\$4,863,206	\$3,067,701	\$14,759,858	
<b>5 EIR / EIS Analysis</b>	\$16,223,046	\$103,203	\$84,576	\$208,702	\$4,382,677	\$7,915,585	\$3,528,303	\$0	\$0	
<b>6 Station Area Planning</b>	\$488,467	\$0	\$0	\$78,660	\$321,976	\$87,831	\$0	\$0	\$0	
<b>7 Draft &amp; Final EIR/EIS</b>	\$4,219,725	\$0	\$0	\$0	\$0	\$956,964	\$3,262,761	\$0	\$0	
<b>8 Certification of EIR/EIS &amp; ROD</b>	\$5,031,715	\$0	\$0	\$0	\$0	\$7,954	\$894,745	\$2,802,166	\$1,326,850	
<b>9 ROW Effort EIR/EIS Process</b>	\$509,645	\$0	\$0	\$0	\$0	\$10,598	\$499,047	\$0	\$0	
<b>10 ROW Activities</b>	\$8,737,327	\$0	\$0	\$0	\$0	\$0	\$3,237,325	\$5,500,002	\$0	
<b>ODC ODCs</b>	\$0	\$0	\$0	\$0	\$0	\$0	\$0	\$0	\$0	
<b>Totals</b>	\$77,152,334	\$314,421	\$316,872	\$1,377,565	\$8,907,194	\$16,472,035	\$18,492,172	\$13,295,793	\$17,976,282	
<b>Actual / Forecast</b>										
<b>1 Project Management</b>	\$5,645,867	\$96,458	\$35,642	\$166,087	\$526,999	\$1,021,639	\$1,194,052	\$1,246,469	\$1,358,521	
<b>2 Public / Agency Participation</b>	\$3,219,756	\$29,776	\$188,260	\$341,001	\$366,931	\$355,898	\$946,072	\$460,766	\$531,053	
<b>3 Alternative Analysis</b>	\$2,079,159	\$33,820	\$8,395	\$522,722	\$1,450,484	\$63,739	\$0	\$0	\$0	
<b>4 Engineering</b>										
15% Preliminary Engineering	\$8,204,724	\$51,167	\$0	\$60,393	\$1,858,126	\$6,051,827	\$183,210	\$0	\$0	
30% Preliminary Engineering	\$21,115,083	\$0	\$0	\$0	\$0	\$0	\$4,488,969	\$1,866,256	\$14,759,858	
<b>5 EIR / EIS Analysis</b>	\$16,207,245	\$103,203	\$84,576	\$208,702	\$4,382,677	\$7,915,585	\$3,512,502	\$0	\$0	
<b>6 Station Area Planning</b>	\$488,467	\$0	\$0	\$78,660	\$321,976	\$87,831	\$0	\$0	\$0	
<b>7 Draft &amp; Final EIR/EIS</b>	\$4,444,646	\$0	\$0	\$0	\$0	\$956,964	\$3,487,682	\$0	\$0	
<b>8 Certification of EIR/EIS &amp; ROD</b>	\$5,375,108	\$0	\$0	\$0	\$0	\$7,954	\$838,286	\$3,202,018	\$1,326,850	
<b>9 ROW EIR/EIS Process</b>	\$509,645	\$0	\$0	\$0	\$0	\$10,598	\$499,047	\$0	\$0	
<b>10 ROW Activities</b>	\$6,887,300	\$0	\$0	\$0	\$0	\$0	\$3,237,325	\$3,649,975	\$0	
<b>ODC ODCs</b>	\$0	\$0	\$0	\$0	\$0	\$0	\$0	\$0	\$0	
<b>Monthly Totals</b>	\$74,177,000	\$314,423	\$316,872	\$1,377,565	\$8,907,194	\$16,472,035	\$18,387,145	\$10,425,484	\$17,976,282	
<b>Cumulative Totals</b>		\$314,423	\$631,295	\$2,008,860	\$10,916,054	\$27,388,089	\$45,775,234	\$56,200,718	\$74,177,000	
<i>Italics = Forecast</i>										

<b>Physical Percent Complete - Program Total* (Actual/Forecast)</b>										
	2006/07	2007/08	2008/09	2009/10	2010/11	2011/12	2012/13	2013/14		
<b>1 Project Management</b>	2%	2%	5%	15%	33%	54%	76%	100%		
<b>2 Public / Agency Participation</b>	1%	7%	17%	29%	40%	69%	84%	100%		
<b>3 Alternative Analysis</b>	2%	2%	27%	97%	100%	100%	100%	100%		
<b>4 Engineering</b>										
15% Preliminary Engineering	1%	1%	1%	24%	98%	100%	100%	100%		
30% Preliminary Engineering	0%	0%	0%	0%	0%	21%	30%	100%		
<b>5 EIR / EIS Analysis</b>	1%	1%	2%	29%	78%	100%	100%	100%		
<b>6 Station Area Planning</b>	0%	0%	16%	82%	100%	100%	100%	100%		
<b>7 Draft &amp; Final EIR/EIS</b>	0%	0%	0%	0%	22%	100%	100%	100%		
<b>8 Certification of EIR/EIS &amp; ROD</b>	0%	0%	0%	0%	0%	16%	75%	100%		
<b>9 ROW Effort EIR/EIS Process</b>	0%	0%	0%	0%	2%	100%	100%	100%		
<b>10 ROW Activities</b>	0%	0%	0%	0%	0%	47%	100%	100%		
<b>TOTAL Annual PROGRESS</b>	0%	1%	3%	15%	37%	62%	76%	100%		
*Physical Percent Complete = Actual Cost / (Actual Cost + Estimate Cost to Completion)										





California High Speed Rail Authority

Cost Performance Report  
December 2012

Merced-Fresno

Planned Progress 71.0%  
Actual Progress 69.7%

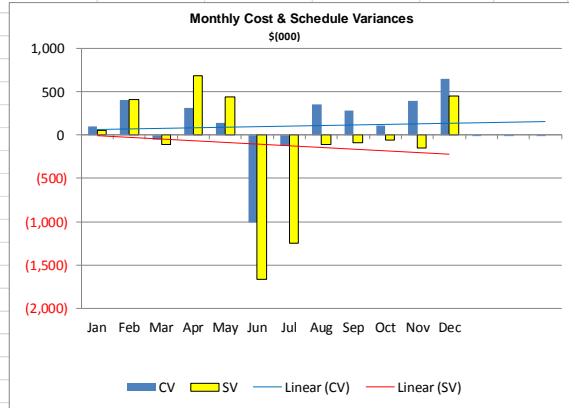
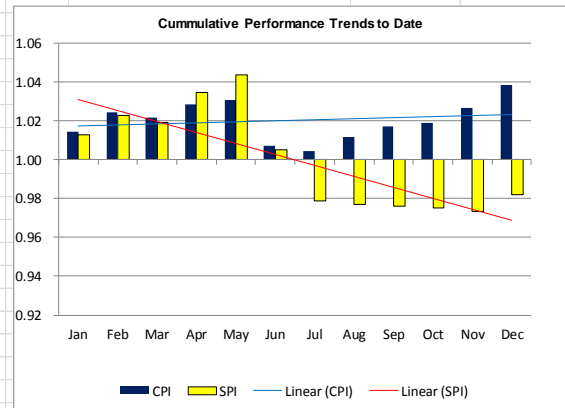
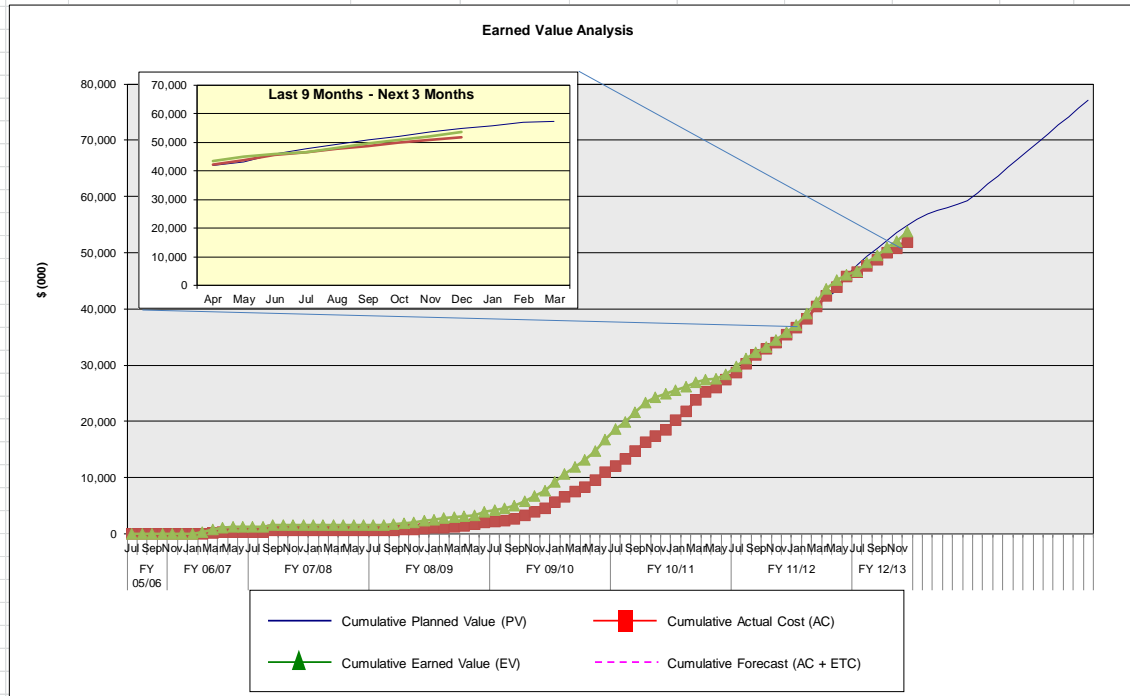


Dollar amounts in thousands

WBS	Task	Total Labor Budget* (BAC)	Planned (PV)	Actual Cost (AC)	Earned (EV)	Forecast (ETC)	Total Cost (EAC)	CPI	SPI
1	Project Management	\$5,723	\$3,745	\$3,668	\$3,602	\$1,978	\$5,646	0.98	0.96
2	Public / Agency Participation	\$3,239	\$2,431	\$2,412	\$2,413	\$808	\$3,220	1.00	0.99
3	Project Definition	\$2,079	\$2,079	\$2,079	\$2,079	\$0	\$2,079	1.00	1.00
4	Preliminary Engineering	\$30,901	\$14,931	\$13,349	\$13,725	\$15,971	\$29,320	1.03	0.92
4.1	Infrastructure 15%	\$8,211	\$8,211	\$8,205	\$8,211	\$0	\$8,205	1.00	1.00
4.11	Infrastructure 30%	\$22,691	\$6,720	\$5,144	\$5,514	\$15,971	\$21,115	1.07	0.82
5	EIR/EIS Analysis	\$16,223	\$16,223	\$16,207	\$16,229	\$0	\$16,207	1.00	1.00
6	Station Area Planning	\$488	\$488	\$488	\$489	\$0	\$488	1.00	1.00
7	Draft and Final EIR/EIS	\$4,220	\$4,220	\$4,445	\$4,221	\$0	\$4,445	0.95	1.00
8	Certification of EIR/EIS and ROD	\$5,032	\$2,426	\$2,769	\$3,422	\$2,606	\$5,375	1.24	1.41
9	ROW EIR/EIS Process	\$510	\$510	\$510	\$510	\$0	\$510	1.00	1.00
10	ROW Activities	\$8,737	\$7,739	\$5,889	\$7,121	\$999	\$6,887	1.21	0.92
ODC	Other Direct Costs *	\$0	\$0	\$0	\$0	\$0	\$0	NA	NA
<b>Total</b>		<b>\$77,152</b>	<b>\$54,791</b>	<b>\$51,816</b>	<b>\$53,809</b>	<b>\$22,361</b>	<b>\$74,177</b>	<b>1.04</b>	<b>0.98</b>

\* Total Labor Budget - is the planned cost of all work less Other Direct Costs (ODC's).

Current Cost Variance (CV) to Date (EV - AC):	\$1,993	Percent under (+) or over (-) budget	3.8%	<b>UNDER BUDGET</b>
Current Schedule Variance (SV) to Date (EV - PV):	(\$983)	Percent ahead (+) or behind (-) schedule	-1.8%	<b>BEHIND SCHEDULE</b>



**Task 9. Rights-of-Way Effort to Support EIR/EIS Process**

- a) Completed the ROW plans for the December 2011 package submittal.

**Task 10. Rights-of-Way Activities this period.**

**AECOM**

- a) Completed Segment 2 Phase 1 efforts. Submitted DRAFT ISA Phase 1 reports to PMT/Authority on 12/21/2012.
- b) Continued coordination with CH2M Hill and AECOM Engineering on design ROW requirements. Continual updates to ROW deliverables such as appraisal maps, displays and exhibits. Sample engineering design refinements includes Klein's site civil, Avenue 15 ½ Jug-handles, and other engineering improvement features (TPSS, emergency egress road, basins, 3<sup>rd</sup> season crossings, etc.) in Segment 2.
- c) Continued appraisal map development from future Veterans Blvd. to Avenue 7. Updated appraisal maps incorporating feedbacks from PMT/Authority on City of Fresno work limits versus the CHSRA work limits.
- d) Continued appraisal map development from Ave. 7 to Ave. 17.
- e) Future Veterans Blvd. to Avenue 7 prepared and coordinated NODA authorization exhibits and letter for Segment 1. Updated exhibits and NODA line list, letters, and other supporting documents.
- f) Revised Preliminary Roadway Design from Avenue 7 to Avenue 17 grade separation to include roadway revisions/ROW impacts resulting from input from local agencies. See section b discussion.
- g) Continued to process information requests and pass information along to various ROW team members (i.e., BRI, O'Dell, Paragon Partners, etc.).
- h) Continued responding to BRI RFI for NODA.
- i) Continued coordination with cultural resources to provide joint access to parcels during the ROW activity.
- j) Continued ISA Phase 2 parcel field investigation/sampling work in Segment 1.
- k) Continued Appraisal Management activities. Includes bi-weekly ROW meetings, internal ROW team meetings, and others.
  - l) Reviewed Paragon Partners Acquisition Plans.
  - m) Continued Mitigation Lands Coordination efforts for 7 EA proposed mitigation sites.
  - n) Continued supporting procurement activities such as addendums for DB procurements modifying appraisal maps for procurement exhibit use.
  - o) Public workshop in Madera (12/12/2012) and Merced (12/13/2012). Includes work efforts for exhibits, attending, and rehearsals.

**CH2M Hill Effort**

- a) Provided design refinement options for access in support of ROW team.
- b) Participated in ROW utility review.

- c) Updated parcel acquisition spreadsheet for design changes.
- d) Supported preparation of a ROW access plan for cultural and biological surveys.

### **O'Dell Effort**

O'Dell Engineering continued the right-of-way mapping and surveying of the Merced-to Fresno section.

For the Clinton Avenue to Avenue 7 portion (Segment 1) our work this period included:

- Began work on request of 33 legal descriptions.
- Provided continued support of the appraisal mapping process.
- Continued work on corridor control and boundary Record of Survey.
- Continued surveying of boundary and control points.

For the Avenue 7 to Avenue 17 section (Segment 2) our work included:

- Continued field surveys and research of private properties affected by the alignment.
- Delivered the boundaries and easements for 6 properties.
- Delivered 2nd review of 45 Appraisal Maps.

### **BRI Effort**

- a) Determined number of impacted parcels requiring an appraisal by BRI in Segment 1 is 122 parcels.
- b) To date BRI has delivered 41 appraisals to AECOM.
- c) Completed 87 draft appraisal reports for review.
- d) Inspected a total of 99 parcels.
- e) Sent out 116 NODA letters.
- f) Completed preliminary appraisal research efforts between Avenue 7 and Avenue 17.
- g) Responded to requests to attend property owner and stakeholder meetings.
- h) Continued Property Liaison efforts.
- i) Continued PTE efforts for Phase 2 & bio and cultural inspections.
- j) Received direction to appraise 5 environmental mitigation sites.
- k) Received approval to mobilize on Segment 2 appraisals.
- l) Program Management:
  - Continued to develop appraisal status tracking/management procedures and tools to handle the over-209 parcels currently underway and the over-100 additional appraisals to be started in January 2013. Sharepoint-based status tools were rolled out and shared with RC and Authority staff. This effort required one part-time person during the month of August. (0.5 FTE)

- Continued to be available to attend special meetings and conference calls requested by Authority and RC staff with property owners, local elected officials, and staff. Specifically:
    - i. December 10 & 11 - public workshop preparation teleconferences.
    - ii. December 21, 2012 - meeting to go over ROW Plan.
    - iii. December 12 & 13, 2012 - community meetings in Madera and Merced.
  - Continued to provide 0.6 to 0.9 FTE of effort in support of “Property Liaison” services, including dozens of phone calls to and from property owners, their agents, and other 3<sup>rd</sup> parties.
- m) Appraisal Management:
- Continued to work with Authority and RC staff to address decisions and data issues affecting more than half of all parcels, including structural “cut and reface” cost estimates, civil/site plans, Phase 2 environmental study needs, utility easement issues, and other policy issues such as property access and use under HST structures.
  - Continued to expend major effort in managing appraisal subconsultants in light of frequent changes in direction regarding appraisal responsibilities, priorities, and methods. Required extensive rework of subconsultant agreements to address shifts in responsibilities and delivery timetables. BRI currently has 9 subconsultants working on the project. This effort was roughly 0.5 FTE during the month.

**ROW Outreach and Communications**

- a) Responded to ROW related inquires and coordinated with project and Authority ROW staff to address questions or concerns.
- b) Began to develop outreach strategy prior to the mailing of NODA 7.
- c) Began to develop outreach strategy for initial offer letters.
- d) Attended JV/AECOM Joint ROW meeting (12/19).

**CirclePoint**

- a) Responded to information requests of property owners along the alignment that are impacted by the project and coordinated outreach needs with the Authority and the BRI team.
- b) Processed incoming comments and information requests related to ROW via CommentSense.
- c) Compiled historical data of previous communications with property owners in the initial construction segment.
- d) Participated in JV/AECOM Joint ROW teleconference (12/19).

***Planned Activities Next Period***

**Task 9 Rights-of-Way Effort to Support EIR/EIS Process**

No activity.

**Task 10 Rights-of-Way Activities**

**AECOM:**

- a) Continue ISA Phase 2 for Segments 1 and 2.

- b) Finalize appraisal-map development from future Veterans Blvd. to Avenue 7 for BRI appraisal activity. Assumes no further revisions or change in approaches.
- c) Finalize resolving easement from future Veterans Blvd. to Avenue 7.
- d) Continue appraisal-map re-development from Ave. 7 to Ave. 17 for BRI appraisal activity.
- e) Send NODA letter to parcel owners for the balance in Segment 1. Example includes Klein and other issue property owners placed on “hold” by the Authority.
- f) Continue field-appraisal support activity (RFI) to BRI specialty appraisers for Segment 1.
- g) Revise Appraisal maps based on team members and stakeholder comments. Development of DRAFT Record Map.
- h) Continue Interdisciplinary coordination of roadway, environmental footprints, and ROW team. Includes coordination meetings, focus meetings, and other similar activities.
- i) Continue Appraisal and Cultural coordination, such as cultural site review.
- j) Continue attending ROW meetings with PMT, Authority, and ROW team.
- k) Receive approval from CHSR to send appraisal notices on remaining impacted parcels from Ashlan to Avenue 7. Continue working with property owners and key stakeholders on key issues.
- l) Finalize City of Fresno remnant-parcel exhibit and coordination with JV to ensure consistency.
- m) Site Civil exhibits to support BRI appraisal activities. Scope and budget approximately 20 EA.
- n) Continue Appraisal Management.
- o) Continue to support environmental team on site-mitigation activities.

**CH2M Hill Effort**

- a) Continue to assist in design refinement options in support of ROW team.
- b) Continue to manage parcel acquisition spreadsheet for design changes.
- c) Continue to support preparation of a ROW access plan for cultural and biological surveys.


**O’Dell Effort**

- a) Topographic surveys as needed for the design team.
- b) Continue the Legal Descriptions for the partial takes and TCEs in Segment 1.
- c) Staking of fee-take areas for appraisal team and affected property owners, Segment 1.
- d) Continue work on the Segment 1 Records of Survey.
- e) Final review of Appraisal Maps in Segment 2.

**BRI Appraisal Effort**

- a) Receive approval to mobilize on UPRR appraisals.
- b) Deliver 8 additional completed appraisal reports.
- c) Mobilize on mitigation and Segment 2 appraisals.
- d) Mobilize on UPRR appraisals

**BRI Program Management Effort**

- 
- a) Continue PTE efforts for cultural and biological reports.
  - b) Respond to requests from the Authority to attend property owner and stakeholder meetings.
  - c) Continue Property Liaison efforts.
  - d) Continue supporting Authority on Program Management. Includes establishing ROW processes, procedures, protocols, etc.

**ROW Outreach and Communications**

- a) Respond to ROW related inquiries and coordinate with project and Authority ROW staff to address questions or concerns.
- b) Inform key stakeholders of NODA 7 and mail them to property owners.
- c) Continue to develop outreach strategy for initial offer letters.
- d) Attend JV/AECOM Joint ROW meetings (1/9, 1/23).
- e) Conduct individual meetings with targeted small businesses along the alignment in Merced.

**CirclePoint**

- a) Support ROW outreach activities.
- b) Transition data and information to the ROW team.

Schedule and work product progress

<b>AECOM</b>		<b>Section Summary Schedule</b>							<b>Merced to Fresno Section December 2012</b>																																																																																																																																																																																																																																																																																																																																																																																																																																																																																																																																																																																																																																																																																																																																																																																																																												
Task Description	Planned Start Date	Planned Finish Date	Actual/Forecast Start Date	Actual/Forecast Finish Date	Total Planned To Date %	Total Physical % Complete	FY Planned % Complete	FY Actual % Complete	<table border="1" style="width: 100%; border-collapse: collapse;"> <thead> <tr> <th colspan="3">2009</th> <th colspan="3">2010</th> <th colspan="3">2011</th> <th colspan="3">2012</th> <th colspan="3">2013</th> </tr> <tr> <th>Q1</th><th>Q2</th><th>Q3</th> <th>Q1</th><th>Q2</th><th>Q3</th> <th>Q1</th><th>Q2</th><th>Q3</th> <th>Q1</th><th>Q2</th><th>Q3</th> <th>Q1</th><th>Q2</th><th>Q3</th> </tr> </thead> <tbody> <tr> <td colspan="16"><b>Task 1 - Project Management</b></td> </tr> <tr> <td>1 - Project Management</td> <td>01-Jul-09</td> <td>01-Jul-13</td> <td>01-Jul-09 A</td> <td>28-Jun-13</td> <td>88</td> <td>88</td> <td>50</td> <td>50</td> <td colspan="13"></td> </tr> <tr> <td colspan="16"><b>Task 2 - Public Participation Program</b></td> </tr> <tr> <td>2 - Public Participation Program</td> <td>01-Jul-09</td> <td>21-Aug-13</td> <td>01-Jul-09 A</td> <td>04-Jan-13</td> <td>100</td> <td>99</td> <td>0</td> <td>0</td> <td colspan="13"></td> </tr> <tr> <td colspan="16"><b>Task 3 - Project Definition / Alternatives Analysis</b></td> </tr> <tr> <td>3 - Project Definition/Alternatives Analysis</td> <td>12-May-09</td> <td>05-Aug-11</td> <td>12-May-09 A</td> <td>07-Sep-10 A</td> <td>100</td> <td>100</td> <td>0</td> <td>0</td> <td colspan="13"></td> </tr> <tr> <td>3.1 - Notice of Preparation/Notice of Intent</td> <td>27-Jul-09</td> <td>30-Nov-09</td> <td>27-Jul-09 A</td> <td>30-Nov-09 A</td> <td>100</td> <td>100</td> <td>0</td> <td>0</td> <td colspan="13"></td> </tr> <tr> <td>3.2 - Project Scoping</td> <td>31-Aug-09</td> <td>23-Oct-09</td> <td>31-Aug-09 A</td> <td>23-Oct-09 A</td> <td>100</td> <td>100</td> <td>0</td> <td>0</td> <td colspan="13"></td> </tr> <tr> <td>3.3 - Refine Project Purpose &amp; Need</td> <td>31-Aug-09</td> <td>27-Jan-10</td> <td>31-Aug-09 A</td> <td>27-Jan-10 A</td> <td>100</td> <td>100</td> <td>0</td> <td>0</td> <td colspan="13"></td> </tr> <tr> <td>3.4 - Alternatives Analysis</td> <td>12-May-09</td> <td>05-Aug-11</td> <td>12-May-09 A</td> <td>07-Sep-10 A</td> <td>100</td> <td>100</td> <td>0</td> <td>0</td> <td colspan="13"></td> </tr> <tr> <td>3.4.5 - Preliminary AA</td> <td>06-Jan-10</td> <td>06-Jan-10</td> <td>06-Jan-10 A</td> <td>09-Apr-10 A</td> <td>100</td> <td>100</td> <td>0</td> <td>0</td> <td colspan="13"></td> </tr> <tr> <td>3.4.7 - AA Board Meeting</td> <td>18-Nov-09</td> <td>18-Nov-09</td> <td>18-Nov-09 A</td> <td>08-Apr-10 A</td> <td>100</td> <td>100</td> <td>0</td> <td>0</td> <td colspan="13"></td> </tr> <tr> <td>3.4.9 - Supplementary AA</td> <td>30-May-11</td> <td>05-Aug-11</td> <td>01-Jun-10 A</td> <td>10-Aug-10 A</td> <td>100</td> <td>100</td> <td>0</td> <td>0</td> <td colspan="13"></td> </tr> <tr> <td colspan="16"><b>Task 4 - Preliminary Engineering</b></td> </tr> <tr> <td>4 - Preliminary Engineering</td> <td>31-Aug-09</td> <td>03-Oct-13</td> <td>31-Aug-09 A</td> <td>28-Jun-13</td> <td>100</td> <td>100</td> <td>0</td> <td>0</td> <td colspan="13"></td> </tr> <tr> <td>4.9.7 Final 15% Design Submittal Full Package</td> <td>11-Aug-10</td> <td>27-Apr-11</td> <td>11-Aug-10 A</td> <td>18-Jul-11 A</td> <td>100</td> <td>100</td> <td>0</td> <td>0</td> <td colspan="13"></td> </tr> <tr> <td>4.19.1 Draft Procurement Contract Package 1</td> <td>28-Aug-11</td> <td>25-Apr-12</td> <td>01-Jul-11 A</td> <td>09-Dec-11 A</td> <td>100</td> <td>100</td> <td>0</td> <td>0</td> <td colspan="13"></td> </tr> <tr> <td>4.19.2 Final Procurement Contract Package 1</td> <td>30-Dec-11</td> <td>30-Jan-12</td> <td>12-Dec-11 A</td> <td>22-Feb-12 A</td> <td>100</td> <td>100</td> <td>0</td> <td>0</td> <td colspan="13"></td> </tr> <tr> <td colspan="16"><b>Task 5 - EIR / EIS Analysis</b></td> </tr> <tr> <td>5 - EIR/EIS Analysis</td> <td>20-Apr-10</td> <td>21-Apr-12</td> <td>20-Apr-10 A</td> <td>29-Jun-12 A</td> <td>100</td> <td>100</td> <td>0</td> <td>0</td> <td colspan="13"></td> </tr> <tr> <td>5.2 - Technical Reports</td> <td>20-Apr-10</td> <td>21-Apr-12</td> <td>20-Apr-10 A</td> <td>29-Jun-12 A</td> <td>100</td> <td>100</td> <td>0</td> <td>0</td> <td colspan="13"></td> </tr> <tr> <td>5.3 - EIR/EIS Baseline / Affected Environmental Analysis</td> <td>20-Apr-10</td> <td>21-Jul-11</td> <td>20-Apr-10 A</td> <td>20-Jun-11 A</td> <td>100</td> <td>100</td> <td>0</td> <td>0</td> <td colspan="13"></td> </tr> <tr> <td colspan="16"><b>Task 6 - Station Area Planning</b></td> </tr> <tr> <td>6 - Station Area Planning</td> <td>30-Apr-10</td> <td>15-Mar-11</td> <td>30-Apr-10 A</td> <td>29-Jul-11 A</td> <td>100</td> <td>100</td> <td>0</td> <td>0</td> <td colspan="13"></td> </tr> <tr> <td colspan="16"><b>Task 7 - Draft and Final EIR / EIS</b></td> </tr> <tr> <td>7 - Draft &amp; Final EIR/EIS</td> <td>15-Jun-10</td> <td>09-Mar-12</td> <td>15-Jun-10 A</td> <td>27-May-12 A</td> <td>100</td> <td>100</td> <td>0</td> <td>0</td> <td colspan="13"></td> </tr> <tr> <td>7.1 - Prepare Administrative Draft EIR/EIS</td> <td>15-Jun-10</td> <td>09-Feb-12</td> <td>15-Jun-10 A</td> <td>06-May-11 A</td> <td>100</td> <td>100</td> <td>0</td> <td>0</td> <td colspan="13"></td> </tr> <tr> <td>7.2 - Prepare Draft EIR/EIS and Public Review</td> <td>28-Aug-11</td> <td>07-Nov-11</td> <td>02-Aug-11 A</td> <td>13-Oct-11 A</td> <td>100</td> <td>100</td> <td>0</td> <td>0</td> <td colspan="13"></td> </tr> <tr> <td>7.3 - Prepare Draft Final EIR/EIS</td> <td>14-Oct-11</td> <td>14-Oct-11</td> <td>14-Oct-11 A</td> <td>15-Dec-11 A</td> <td>100</td> <td>100</td> <td>0</td> <td>0</td> <td colspan="13"></td> </tr> <tr> <td>7.6 - Final EIR/EIS</td> <td>16-Dec-11</td> <td>27-May-12</td> <td>16-Dec-11 A</td> <td>27-May-12 A</td> <td>100</td> <td>100</td> <td>0</td> <td>0</td> <td colspan="13"></td> </tr> <tr> <td>7.6.11 Board Certifies Final EIR/EIS</td> <td></td> <td>03-May-12</td> <td></td> <td>03-May-12 A</td> <td>100</td> <td>100</td> <td>0</td> <td>0</td> <td colspan="13"></td> </tr> <tr> <td colspan="16"><b>Task 8 - Certification of EIR/EIS and ROD</b></td> </tr> <tr> <td>8 - Certification of EIR/EIS &amp; ROD</td> <td>23-Mar-12</td> <td>16-Jul-13</td> <td>27-Feb-12 A</td> <td>18-Sep-12 A</td> <td>100</td> <td>100</td> <td>0</td> <td>0</td> <td colspan="13"></td> </tr> <tr> <td colspan="16"><b>Task 10 - ROW Preservation and Acquisition</b></td> </tr> <tr> <td>10 - ROW Activities</td> <td>29-Jul-11</td> <td>03-Sep-13</td> <td>01-Jul-11 A</td> <td>03-May-13</td> <td>81</td> <td>84</td> <td>50</td> <td>60</td> <td colspan="13"></td> </tr> <tr> <td colspan="16"><b>Total Section Progress Complete</b></td> </tr> <tr> <td>Total Section Progress Complete</td> <td>05-Nov-08</td> <td>28-Jun-13</td> <td>05-Nov-08 A</td> <td>28-Jun-13</td> <td>89</td> <td>89</td> <td>50</td> <td>50</td> <td colspan="13"></td> </tr> </tbody> </table>													2009			2010			2011			2012			2013			Q1	Q2	Q3	Q1	Q2	Q3	Q1	Q2	Q3	Q1	Q2	Q3	Q1	Q2	Q3	<b>Task 1 - Project Management</b>																1 - Project Management	01-Jul-09	01-Jul-13	01-Jul-09 A	28-Jun-13	88	88	50	50														<b>Task 2 - Public Participation Program</b>																2 - Public Participation Program	01-Jul-09	21-Aug-13	01-Jul-09 A	04-Jan-13	100	99	0	0														<b>Task 3 - Project Definition / Alternatives Analysis</b>																3 - Project Definition/Alternatives Analysis	12-May-09	05-Aug-11	12-May-09 A	07-Sep-10 A	100	100	0	0														3.1 - Notice of Preparation/Notice of Intent	27-Jul-09	30-Nov-09	27-Jul-09 A	30-Nov-09 A	100	100	0	0														3.2 - Project Scoping	31-Aug-09	23-Oct-09	31-Aug-09 A	23-Oct-09 A	100	100	0	0														3.3 - Refine Project Purpose & Need	31-Aug-09	27-Jan-10	31-Aug-09 A	27-Jan-10 A	100	100	0	0														3.4 - Alternatives Analysis	12-May-09	05-Aug-11	12-May-09 A	07-Sep-10 A	100	100	0	0														3.4.5 - Preliminary AA	06-Jan-10	06-Jan-10	06-Jan-10 A	09-Apr-10 A	100	100	0	0														3.4.7 - AA Board Meeting	18-Nov-09	18-Nov-09	18-Nov-09 A	08-Apr-10 A	100	100	0	0														3.4.9 - Supplementary AA	30-May-11	05-Aug-11	01-Jun-10 A	10-Aug-10 A	100	100	0	0														<b>Task 4 - Preliminary Engineering</b>																4 - Preliminary Engineering	31-Aug-09	03-Oct-13	31-Aug-09 A	28-Jun-13	100	100	0	0														4.9.7 Final 15% Design Submittal Full Package	11-Aug-10	27-Apr-11	11-Aug-10 A	18-Jul-11 A	100	100	0	0														4.19.1 Draft Procurement Contract Package 1	28-Aug-11	25-Apr-12	01-Jul-11 A	09-Dec-11 A	100	100	0	0														4.19.2 Final Procurement Contract Package 1	30-Dec-11	30-Jan-12	12-Dec-11 A	22-Feb-12 A	100	100	0	0														<b>Task 5 - EIR / EIS Analysis</b>																5 - EIR/EIS Analysis	20-Apr-10	21-Apr-12	20-Apr-10 A	29-Jun-12 A	100	100	0	0														5.2 - Technical Reports	20-Apr-10	21-Apr-12	20-Apr-10 A	29-Jun-12 A	100	100	0	0														5.3 - EIR/EIS Baseline / Affected Environmental Analysis	20-Apr-10	21-Jul-11	20-Apr-10 A	20-Jun-11 A	100	100	0	0														<b>Task 6 - Station Area Planning</b>																6 - Station Area Planning	30-Apr-10	15-Mar-11	30-Apr-10 A	29-Jul-11 A	100	100	0	0														<b>Task 7 - Draft and Final EIR / EIS</b>																7 - Draft & Final EIR/EIS	15-Jun-10	09-Mar-12	15-Jun-10 A	27-May-12 A	100	100	0	0														7.1 - Prepare Administrative Draft EIR/EIS	15-Jun-10	09-Feb-12	15-Jun-10 A	06-May-11 A	100	100	0	0														7.2 - Prepare Draft EIR/EIS and Public Review	28-Aug-11	07-Nov-11	02-Aug-11 A	13-Oct-11 A	100	100	0	0														7.3 - Prepare Draft Final EIR/EIS	14-Oct-11	14-Oct-11	14-Oct-11 A	15-Dec-11 A	100	100	0	0														7.6 - Final EIR/EIS	16-Dec-11	27-May-12	16-Dec-11 A	27-May-12 A	100	100	0	0														7.6.11 Board Certifies Final EIR/EIS		03-May-12		03-May-12 A	100	100	0	0														<b>Task 8 - Certification of EIR/EIS and ROD</b>																8 - Certification of EIR/EIS & ROD	23-Mar-12	16-Jul-13	27-Feb-12 A	18-Sep-12 A	100	100	0	0														<b>Task 10 - ROW Preservation and Acquisition</b>																10 - ROW Activities	29-Jul-11	03-Sep-13	01-Jul-11 A	03-May-13	81	84	50	60														<b>Total Section Progress Complete</b>																Total Section Progress Complete	05-Nov-08	28-Jun-13	05-Nov-08 A	28-Jun-13	89	89	50	50													
2009			2010			2011			2012			2013																																																																																																																																																																																																																																																																																																																																																																																																																																																																																																																																																																																																																																																																																																																																																																																																																									
Q1	Q2	Q3	Q1	Q2	Q3	Q1	Q2	Q3	Q1	Q2	Q3	Q1	Q2	Q3																																																																																																																																																																																																																																																																																																																																																																																																																																																																																																																																																																																																																																																																																																																																																																																																																							
<b>Task 1 - Project Management</b>																																																																																																																																																																																																																																																																																																																																																																																																																																																																																																																																																																																																																																																																																																																																																																																																																																					
1 - Project Management	01-Jul-09	01-Jul-13	01-Jul-09 A	28-Jun-13	88	88	50	50																																																																																																																																																																																																																																																																																																																																																																																																																																																																																																																																																																																																																																																																																																																																																																																																																													
<b>Task 2 - Public Participation Program</b>																																																																																																																																																																																																																																																																																																																																																																																																																																																																																																																																																																																																																																																																																																																																																																																																																																					
2 - Public Participation Program	01-Jul-09	21-Aug-13	01-Jul-09 A	04-Jan-13	100	99	0	0																																																																																																																																																																																																																																																																																																																																																																																																																																																																																																																																																																																																																																																																																																																																																																																																																													
<b>Task 3 - Project Definition / Alternatives Analysis</b>																																																																																																																																																																																																																																																																																																																																																																																																																																																																																																																																																																																																																																																																																																																																																																																																																																					
3 - Project Definition/Alternatives Analysis	12-May-09	05-Aug-11	12-May-09 A	07-Sep-10 A	100	100	0	0																																																																																																																																																																																																																																																																																																																																																																																																																																																																																																																																																																																																																																																																																																																																																																																																																													
3.1 - Notice of Preparation/Notice of Intent	27-Jul-09	30-Nov-09	27-Jul-09 A	30-Nov-09 A	100	100	0	0																																																																																																																																																																																																																																																																																																																																																																																																																																																																																																																																																																																																																																																																																																																																																																																																																													
3.2 - Project Scoping	31-Aug-09	23-Oct-09	31-Aug-09 A	23-Oct-09 A	100	100	0	0																																																																																																																																																																																																																																																																																																																																																																																																																																																																																																																																																																																																																																																																																																																																																																																																																													
3.3 - Refine Project Purpose & Need	31-Aug-09	27-Jan-10	31-Aug-09 A	27-Jan-10 A	100	100	0	0																																																																																																																																																																																																																																																																																																																																																																																																																																																																																																																																																																																																																																																																																																																																																																																																																													
3.4 - Alternatives Analysis	12-May-09	05-Aug-11	12-May-09 A	07-Sep-10 A	100	100	0	0																																																																																																																																																																																																																																																																																																																																																																																																																																																																																																																																																																																																																																																																																																																																																																																																																													
3.4.5 - Preliminary AA	06-Jan-10	06-Jan-10	06-Jan-10 A	09-Apr-10 A	100	100	0	0																																																																																																																																																																																																																																																																																																																																																																																																																																																																																																																																																																																																																																																																																																																																																																																																																													
3.4.7 - AA Board Meeting	18-Nov-09	18-Nov-09	18-Nov-09 A	08-Apr-10 A	100	100	0	0																																																																																																																																																																																																																																																																																																																																																																																																																																																																																																																																																																																																																																																																																																																																																																																																																													
3.4.9 - Supplementary AA	30-May-11	05-Aug-11	01-Jun-10 A	10-Aug-10 A	100	100	0	0																																																																																																																																																																																																																																																																																																																																																																																																																																																																																																																																																																																																																																																																																																																																																																																																																													
<b>Task 4 - Preliminary Engineering</b>																																																																																																																																																																																																																																																																																																																																																																																																																																																																																																																																																																																																																																																																																																																																																																																																																																					
4 - Preliminary Engineering	31-Aug-09	03-Oct-13	31-Aug-09 A	28-Jun-13	100	100	0	0																																																																																																																																																																																																																																																																																																																																																																																																																																																																																																																																																																																																																																																																																																																																																																																																																													
4.9.7 Final 15% Design Submittal Full Package	11-Aug-10	27-Apr-11	11-Aug-10 A	18-Jul-11 A	100	100	0	0																																																																																																																																																																																																																																																																																																																																																																																																																																																																																																																																																																																																																																																																																																																																																																																																																													
4.19.1 Draft Procurement Contract Package 1	28-Aug-11	25-Apr-12	01-Jul-11 A	09-Dec-11 A	100	100	0	0																																																																																																																																																																																																																																																																																																																																																																																																																																																																																																																																																																																																																																																																																																																																																																																																																													
4.19.2 Final Procurement Contract Package 1	30-Dec-11	30-Jan-12	12-Dec-11 A	22-Feb-12 A	100	100	0	0																																																																																																																																																																																																																																																																																																																																																																																																																																																																																																																																																																																																																																																																																																																																																																																																																													
<b>Task 5 - EIR / EIS Analysis</b>																																																																																																																																																																																																																																																																																																																																																																																																																																																																																																																																																																																																																																																																																																																																																																																																																																					
5 - EIR/EIS Analysis	20-Apr-10	21-Apr-12	20-Apr-10 A	29-Jun-12 A	100	100	0	0																																																																																																																																																																																																																																																																																																																																																																																																																																																																																																																																																																																																																																																																																																																																																																																																																													
5.2 - Technical Reports	20-Apr-10	21-Apr-12	20-Apr-10 A	29-Jun-12 A	100	100	0	0																																																																																																																																																																																																																																																																																																																																																																																																																																																																																																																																																																																																																																																																																																																																																																																																																													
5.3 - EIR/EIS Baseline / Affected Environmental Analysis	20-Apr-10	21-Jul-11	20-Apr-10 A	20-Jun-11 A	100	100	0	0																																																																																																																																																																																																																																																																																																																																																																																																																																																																																																																																																																																																																																																																																																																																																																																																																													
<b>Task 6 - Station Area Planning</b>																																																																																																																																																																																																																																																																																																																																																																																																																																																																																																																																																																																																																																																																																																																																																																																																																																					
6 - Station Area Planning	30-Apr-10	15-Mar-11	30-Apr-10 A	29-Jul-11 A	100	100	0	0																																																																																																																																																																																																																																																																																																																																																																																																																																																																																																																																																																																																																																																																																																																																																																																																																													
<b>Task 7 - Draft and Final EIR / EIS</b>																																																																																																																																																																																																																																																																																																																																																																																																																																																																																																																																																																																																																																																																																																																																																																																																																																					
7 - Draft & Final EIR/EIS	15-Jun-10	09-Mar-12	15-Jun-10 A	27-May-12 A	100	100	0	0																																																																																																																																																																																																																																																																																																																																																																																																																																																																																																																																																																																																																																																																																																																																																																																																																													
7.1 - Prepare Administrative Draft EIR/EIS	15-Jun-10	09-Feb-12	15-Jun-10 A	06-May-11 A	100	100	0	0																																																																																																																																																																																																																																																																																																																																																																																																																																																																																																																																																																																																																																																																																																																																																																																																																													
7.2 - Prepare Draft EIR/EIS and Public Review	28-Aug-11	07-Nov-11	02-Aug-11 A	13-Oct-11 A	100	100	0	0																																																																																																																																																																																																																																																																																																																																																																																																																																																																																																																																																																																																																																																																																																																																																																																																																													
7.3 - Prepare Draft Final EIR/EIS	14-Oct-11	14-Oct-11	14-Oct-11 A	15-Dec-11 A	100	100	0	0																																																																																																																																																																																																																																																																																																																																																																																																																																																																																																																																																																																																																																																																																																																																																																																																																													
7.6 - Final EIR/EIS	16-Dec-11	27-May-12	16-Dec-11 A	27-May-12 A	100	100	0	0																																																																																																																																																																																																																																																																																																																																																																																																																																																																																																																																																																																																																																																																																																																																																																																																																													
7.6.11 Board Certifies Final EIR/EIS		03-May-12		03-May-12 A	100	100	0	0																																																																																																																																																																																																																																																																																																																																																																																																																																																																																																																																																																																																																																																																																																																																																																																																																													
<b>Task 8 - Certification of EIR/EIS and ROD</b>																																																																																																																																																																																																																																																																																																																																																																																																																																																																																																																																																																																																																																																																																																																																																																																																																																					
8 - Certification of EIR/EIS & ROD	23-Mar-12	16-Jul-13	27-Feb-12 A	18-Sep-12 A	100	100	0	0																																																																																																																																																																																																																																																																																																																																																																																																																																																																																																																																																																																																																																																																																																																																																																																																																													
<b>Task 10 - ROW Preservation and Acquisition</b>																																																																																																																																																																																																																																																																																																																																																																																																																																																																																																																																																																																																																																																																																																																																																																																																																																					
10 - ROW Activities	29-Jul-11	03-Sep-13	01-Jul-11 A	03-May-13	81	84	50	60																																																																																																																																																																																																																																																																																																																																																																																																																																																																																																																																																																																																																																																																																																																																																																																																																													
<b>Total Section Progress Complete</b>																																																																																																																																																																																																																																																																																																																																																																																																																																																																																																																																																																																																																																																																																																																																																																																																																																					
Total Section Progress Complete	05-Nov-08	28-Jun-13	05-Nov-08 A	28-Jun-13	89	89	50	50																																																																																																																																																																																																																																																																																																																																																																																																																																																																																																																																																																																																																																																																																																																																																																																																																													
Project ID: MF_AECOM_28Dec12 Mon	Project Start: 05-Nov-08		<b>Section Summary Schedule</b>					Page 1 of 1																																																																																																																																																																																																																																																																																																																																																																																																																																																																																																																																																																																																																																																																																																																																																																																																																													
Layout Name: RC PSS - R2 (AECOM)	Project Finish: 02-Oct-13							07-Jan-13																																																																																																																																																																																																																																																																																																																																																																																																																																																																																																																																																																																																																																																																																																																																																																																																																													
Report Name: Section Summary	Data Date: 29-Dec-12																																																																																																																																																																																																																																																																																																																																																																																																																																																																																																																																																																																																																																																																																																																																																																																																																																				