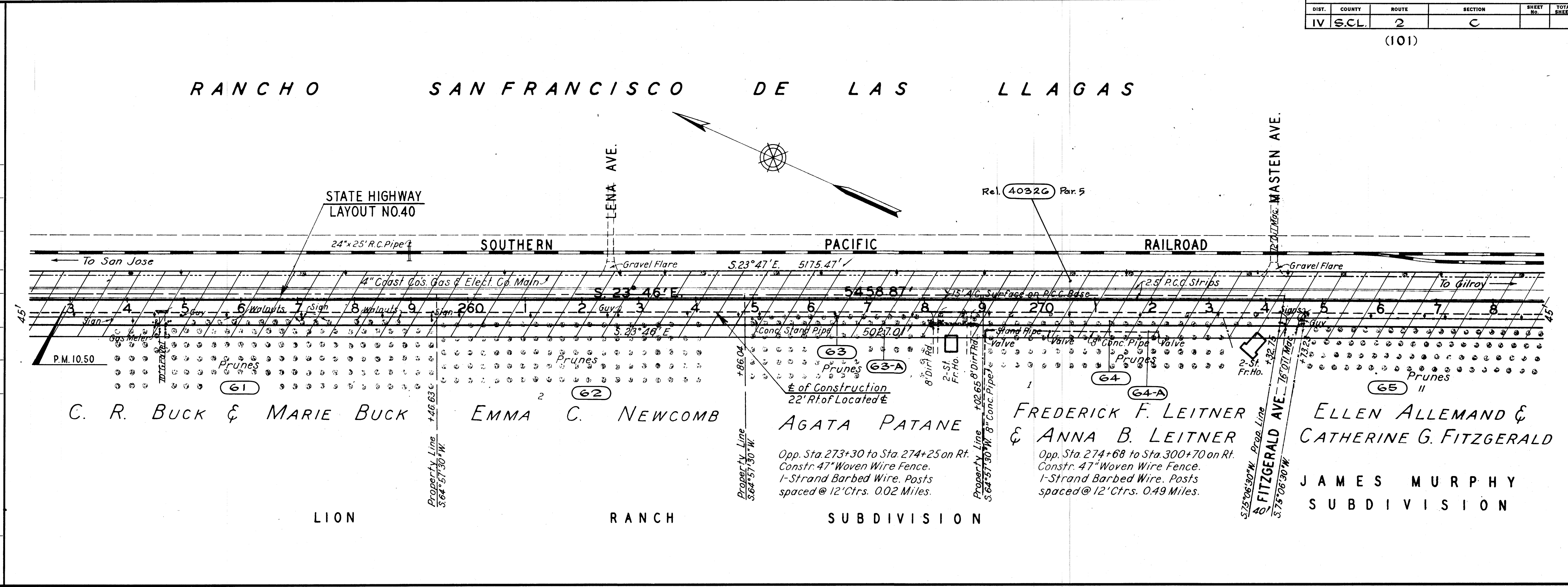


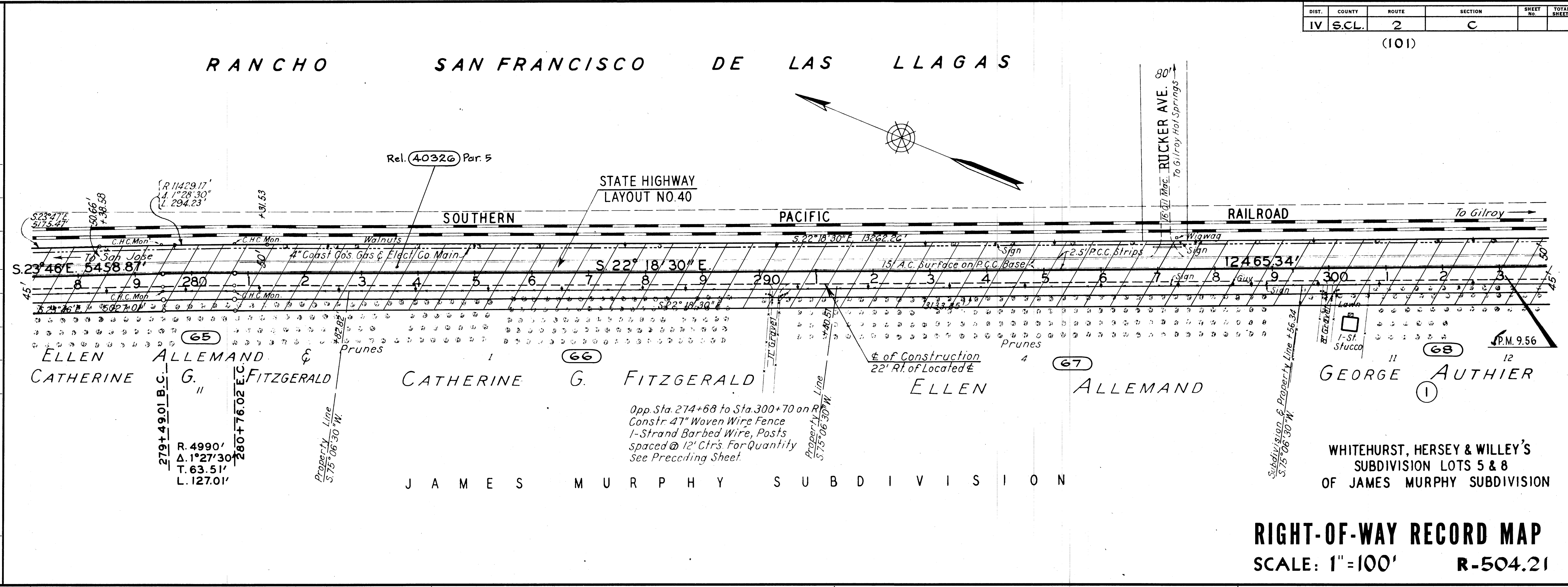
REVISIONS	DATE
Added Ref. 4032G	9-79
Conform to HF	3-91

DIST.	COUNTY	ROUTE	SECTION	SHEET NO.	TOTAL SHEETS
IV	S.C.L.	2	C	(101)	

No.	Grantor	Area Acquired (A.C.±)		Type	Deed	Recordation		Page	Remarks
		Total	R/W			Date	Book		
61	C. R. Buck et ux	1.283		F	1-14-41	1017	440		
62	Emma C. Newcomb	0.931		F	1-22-40	1016	262		
63	Agata Patane et vir	0.529		F	3-4-41	1026	382		
63-A	"	0.191		F	12-9-41	1076	276		
64	Frederick F. Leitner et ux	0.671		F	10-24-40	1003	501		
64-A	"	0.239		F	4-4-41	1030	356		
65	Ellen Allemant et al	0.654		F	11-22-40	1014	107		
4032G	State to County of Santa Clara			Rel.	6-3-79	445	301		Par. 5



No.	Grantor	Area Acquired (A.C.±)		Type	Deed	Recordation		Page	Remarks
		Total	R/W			Date	Book		
65	Ellen Allemant et al	0.654		F	11-22-40	1014	107		
66	Catherine G. Fitzgerald	0.689		F	1-22-40	1014	108		
67	Ellen Allemant et ux	0.656		F	9-4-41	1018	324		
68	George Authier et ux	0.506		F	12-3-40	1014	241		
4032G	State to County of Santa Clara			Rel.	6-3-79	445	301		Par. 5



RIGHT-OF-WAY RECORD MAP
SCALE: 1"=100' R-504.21

R504023