

Progress Report for January 2013

MERCED - FRESNO SUBSECTION

AECOM Transportation ♦ CH2M HILL

Tasks 1 – 8 Progress Report

Environmental Milestone Schedule

Section/Activity	Plan Actual/Forecast % complete	Scoping Report	Board Briefing to Approve Release of the AA Report	Release Preliminary AA Report	Board Briefing to Approve Supplemental AA Report	Release Supplemental AA Report	Technical Reports	Admin Draft EIR/EIS	15% Design	Draft EIR/EIS	Final EIR/EIS	NOD/ROD	Percent Complete Toward NOD/ROD
Merced - Fresno	Plan	Mar. '10	Apr. 8, 2010	Apr. '10	Jun. 3, 2010	June '10	Aug. '10	Aug. '10	Sept. '10	Mar. '11	Feb. '11	April '12	100%
65 miles	Actual/Forecast	Mar. 10 A	Apr. 8, 2010	Apr. '10 A	Aug. 5, 2010	Aug. '10	Dec '10	Sept. '10	Aug '11	Aug '11	May '12	Sept '12	
	% Complete	100%	100%	100%	100%	100%	100%	100%	100%	100%	100%	100%	

Major / Key Issues and Areas of Concern

SCOPE:

Environmental: Refinement of the scope for all of the permit applications and mitigation strategies was completed and is under PMT and Authority review. In addition, the PMT requested a number of new scope items (or items that have expanded from their original scope) that have required immediate attention. Among these are developing work plans for the parcels for which permission to enter (PTE) is being sought to conduct cultural & bio surveys, developing quantities to support the PMT with cost estimating of mitigation measures, completing preliminary environmental evaluations of design refinements suggested by others, assisting the PMT and Authority with mitigation planning at the targeted off-site mitigation sites, and assisting the PMT and Authority with refinements to the Programmatic Agreement governing compliance with Section 106.

15% Engineering: This work was completed by April 9, 2012, with the inclusion of the revisions to the Merced Station 15% Design.

30% Engineering: It is critical to finalize agency agreements with City of Fresno, Caltrans and UPRR to complete Construction Package 1 (CP1) per schedule. Continued to provide requested support for the EIR/EIS foot-print and documentation, Outreach support, Environmental Permitting, Procurement Package preparation, and Right-of-Way (ROW) Appraisal Program.

Procurement Package Design: Assisted in issuing the Draft Addenda for FRA review.

Engineering Support for Environmental Permitting: The AECOM Engineering Team continued providing engineering support as required for the preparation of numerous Environmental Permits for construction of CP1A.

SCHEDULE:

Environmental:

The team continued work on permit applications as well as preparation of the permittee-responsible mitigation plan (PRMP) in support of permit applications. Furthermore, the Team supported planning for implementation of mitigation at five original mitigation sites and two newly identified sites (JCR Ranch, Yosemite Lake). The 2081 permit application, the permittee-responsible mitigation plan, and the 404 permit application were submitted to the PMT. The Team prepared for and led meetings to discuss the regulatory framework for stormwater management, practical considerations for implementation during construction, and a Mitigation Task Force presentation to the PMT. The Team prepared impact and mitigation data for use by the COE for the 404 permit. All permit applications and the PRMP (with the original five sites) will be submitted to regulatory agencies in the next reporting period.

The Team responded to Authority/FRA comments on Section 106 documentation for the Fresno area and provided copies to the Authority for submittal to the SHPO in late January 2013.

Since August, the PMT and RC have evaluated the priorities for conducting environmental activities that were included in the initial AWP and those that were not. These revised scope items include surveys for biological and cultural resources needed prior to construction (scheduled to start in 2013), as well as assessment of design changes suggested by others.

In light of the planned design changes, a refined strategy and timeline for preparation of permit applications required for the COE's ROD and CP1A section construction are needed.

It is critical to finalize agency agreements with the City of Fresno, Caltrans and UPRR to complete Construction Package 1 per schedule.

Engineering:

Realignment of Golden State Boulevard (GSB) study almost complete as is the alignment refinement of Chowchilla to Merced. SR99 project report submitted to Caltrans.

BUDGET

Budget: On July 27th the Limited Notice to Proceed (LNTP-01) was issued for Tasks 1-8 for \$2,500,000. On November 16, 2012, LNTP-01A was issued for Tasks 1-8, for \$3,371,989, bringing the total authorized value to \$5,871,989.

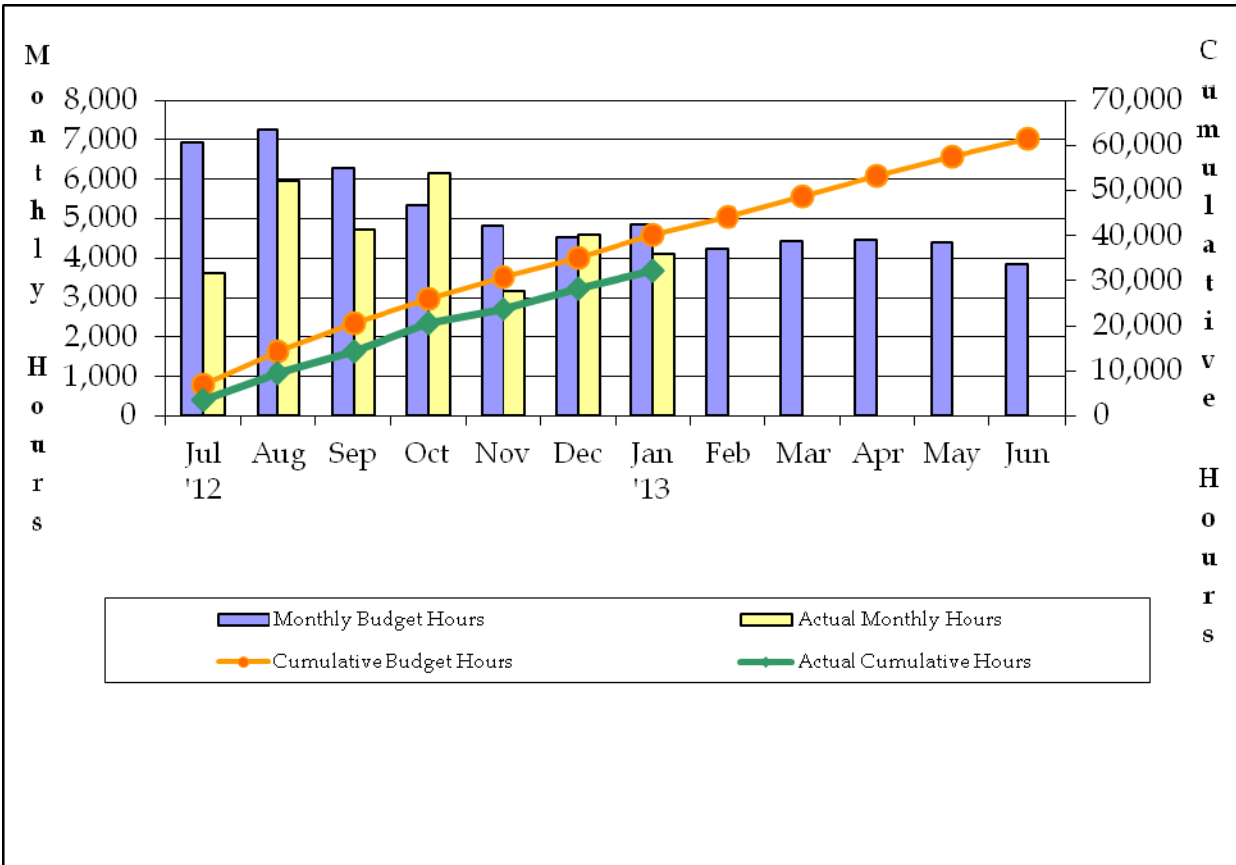
Regarding proposed changes to scope of work priorities identified above, AWP Rev 4 was revised to reflect the most up-to-date scope/schedule/budget for FY 12/13 and is awaiting approval.

Financial Reporting

Fiscal Year Hours

The staff hours worked for Task 1 thru Task 8 total to 4,121 labor hours for the month of January, which was 15.3% below the monthly budgeted hours of 4,867 for January. Cumulative labor hours worked (32,336) from July 1st to date are 19.3% below the budgeted labor hours (40,074) for the fiscal year to date.

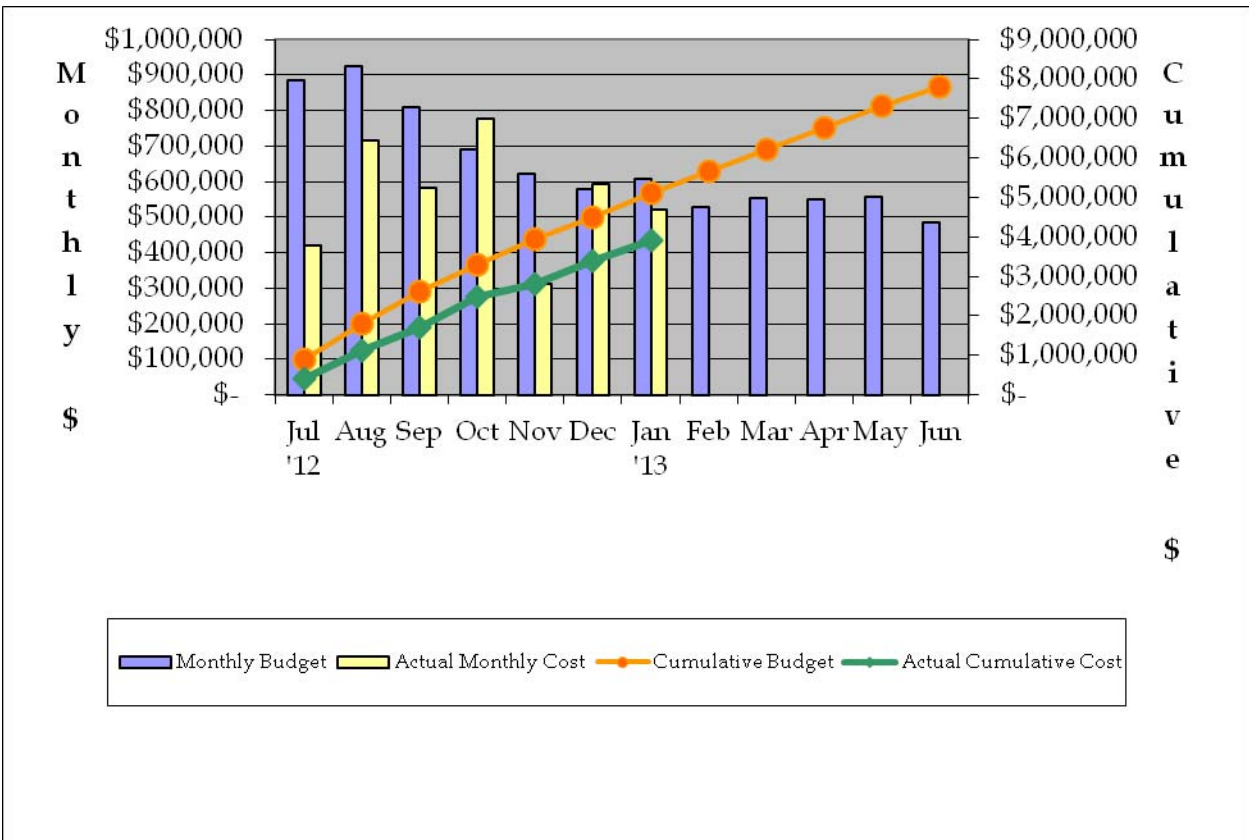
Hours Summary FY 2012 - 2013



Fiscal Year Dollars

As of January 31, 2013 the unapproved submitted AWP Rev 4 budget for FY12/13 for Merced – Fresno Task 1-8 is \$7,795,797. On November 16, 2012 the LNTP-01A authorized a total budget of \$5,871,989. Task 1-8 expenditures for the month of January were \$522,873 which was 14.0% below the budget of \$608,196. Task 1-8 cumulative dollars (\$3,924,022) from July 1 to date were approximately 23.4% below the cumulative budget (\$5,119,459) to date.

Cost Summary FY 2012 – 2013



Fiscal Year Total Hours / Dollars,

Section:	Merced to Fresno												
Regional Consultant	AECOM												
Hour Summary	FY 2012 -2013												
HOURS													
Budgeted	Total	July	August	September	October	November	December	January	February	March	April	May	June
1 Project Management	9,425	957	1,001	870	900	861	817	788	685	719	618	647	562
2 Public / Agency Participation	3,578	313	328	273	314	301	287	314	273	287	301	314	273
3 Alternative Analysis	-	-	-	-	-	-	-	-	-	-	-	-	-
4 Engineering													
15% Preliminary Engineering	-	-	-	-	-	-	-	-	-	-	-	-	-
30% Preliminary Engineering	11,657	1,737	1,816	1,579	1,223	880	829	664	577	606	591	618	537
5 EIR / EIS Analysis	-	-	-	-	-	-	-	-	-	-	-	-	-
6 Station Area Planning	-	-	-	-	-	-	-	-	-	-	-	-	-
7 Draft & Final EIR/EIS	-	-	-	-	-	-	-	-	-	-	-	-	-
8 Certification of EIR/EIS & ROD	36,810	3,935	4,114	3,577	2,918	2,791	2,586	3,101	2,696	2,831	2,966	2,832	2,463
9 ROW EIR/EIS Process	-	-	-	-	-	-	-	-	-	-	-	-	-
10 ROW Activities	53,395	5,127	5,360	4,661	5,360	5,635	5,610	4,423	3,846	3,470	3,636	3,351	2,916
ODC ODCs	-	-	-	-	-	-	-	-	-	-	-	-	-
Totals	114,865	12,069	12,619	10,960	10,715	10,468	10,129	9,290	8,077	7,913	8,112	7,762	6,751
20,508													
Actual / Forecast	Total	July	August	September	October	November	December	January	February	March	April	May	June
1 Project Management	8,203	471	815	743	1,010	564	678	691	685	719	618	647	562
2 Public / Agency Participation	3,961	230	734	246	303	148	653	199	273	287	301	314	273
3 Alternative Analysis	-	-	-	-	-	-	-	-	-	-	-	-	-
4 Engineering													
15% Preliminary Engineering	-	-	-	-	-	-	-	-	-	-	-	-	-
30% Preliminary Engineering	8,143	552	716	875	882	1,149	541	499	577	606	591	618	537
5 EIR / EIS Analysis	-	-	-	-	-	-	-	-	-	-	-	-	-
6 Station Area Planning	-	-	-	-	-	-	-	-	-	-	-	-	-
7 Draft & Final EIR/EIS	-	-	-	-	-	-	-	-	-	-	-	-	-
8 Certification of EIR/EIS & ROD	33,447	2,375	3,685	2,883	3,965	1,309	2,710	2,732	2,696	2,831	2,966	2,832	2,463
9 ROW EIR/EIS Process	-	-	-	-	-	-	-	-	-	-	-	-	-
10 ROW Activities	51,707	3,727	5,128	4,629	4,738	5,193	5,493	5,580	3,846	3,470	3,636	3,351	2,916
ODC ODCs	-	-	-	-	-	-	-	-	-	-	-	-	-
Monthly Totals	105,462	7,355	11,078	9,376	10,898	8,363	10,075	9,701	8,077	7,913	8,112	7,762	6,751
Cumulative Totals		7,355	18,433	27,810	38,708	47,071	57,146	66,847	74,924	82,837	90,949	98,711	105,462
Cost Summary	FY 2012 -2013												
DOLLARS													
Budgeted	Total	July	August	September	October	November	December	January	February	March	April	May	June
1 Project Management	\$1,334,034	\$136,637	\$142,848	\$124,215	\$123,671	\$118,294	\$112,535	\$114,876	\$99,892	\$104,887	\$86,707	\$90,648	\$78,824
2 Public / Agency Participation	\$368,893	\$32,282	\$33,749	\$28,173	\$32,399	\$30,991	\$29,582	\$32,399	\$28,173	\$29,582	\$30,991	\$32,399	\$28,173
3 Alternative Analysis	\$0	\$0	\$0	\$0	\$0	\$0	\$0	\$0	\$0	\$0	\$0	\$0	\$0
4 Engineering													
15% Preliminary Engineering	\$0	\$0	\$0	\$0	\$0	\$0	\$0	\$0	\$0	\$0	\$0	\$0	\$0
30% Preliminary Engineering	\$1,688,139	\$242,189	\$252,524	\$226,537	\$175,557	\$130,055	\$122,626	\$101,064	\$87,882	\$92,276	\$87,130	\$91,090	\$79,209
5 EIR / EIS Analysis	\$0	\$0	\$0	\$0	\$0	\$0	\$0	\$0	\$0	\$0	\$0	\$0	\$0
6 Station Area Planning	\$0	\$0	\$0	\$0	\$0	\$0	\$0	\$0	\$0	\$0	\$0	\$0	\$0
7 Draft & Final EIR/EIS	\$0	\$0	\$0	\$0	\$0	\$0	\$0	\$0	\$0	\$0	\$0	\$0	\$0
8 Certification of EIR/EIS & ROD	\$4,404,728	\$474,679	\$496,256	\$431,527	\$357,789	\$342,233	\$313,915	\$359,857	\$312,919	\$328,565	\$344,211	\$343,811	\$298,966
9 ROW EIR/EIS Process	\$0	\$0	\$0	\$0	\$0	\$0	\$0	\$0	\$0	\$0	\$0	\$0	\$0
10 ROW Activities	\$5,500,000	\$523,375	\$547,164	\$475,795	\$547,164	\$577,645	\$574,868	\$477,402	\$415,132	\$353,619	\$370,458	\$340,923	\$296,455
ODC ODCs	\$0	\$0	\$0	\$0	\$0	\$0	\$0	\$0	\$0	\$0	\$0	\$0	\$0
Totals	\$13,295,794	\$1,409,162	\$1,472,541	\$1,286,247	\$1,236,580	\$1,199,218	\$1,153,526	\$1,085,598	\$943,998	\$908,929	\$919,497	\$898,871	\$781,627
\$2,093,498													
Actual / Forecast	Total	July	August	September	October	November	December	January	February	March	April	May	June
1 Project Management	\$1,187,438	\$76,042	\$120,793	\$110,119	\$138,193	\$84,596	\$97,718	\$99,019	\$99,892	\$104,887	\$86,707	\$90,648	\$78,824
2 Public / Agency Participation	\$360,093	\$20,548	\$30,424	\$25,231	\$30,396	\$13,586	\$63,709	\$26,881	\$28,173	\$29,582	\$30,991	\$32,399	\$28,173
3 Alternative Analysis	\$0	\$0	\$0	\$0	\$0	\$0	\$0	\$0	\$0	\$0	\$0	\$0	\$0
4 Engineering													
15% Preliminary Engineering	\$0	\$0	\$0	\$0	\$0	\$0	\$0	\$0	\$0	\$0	\$0	\$0	\$0
30% Preliminary Engineering	\$1,170,243	\$77,123	\$161,513	\$117,237	\$151,860	\$55,238	\$92,241	\$77,444	\$87,882	\$92,276	\$87,130	\$91,090	\$79,209
5 EIR / EIS Analysis	\$0	\$0	\$0	\$0	\$0	\$0	\$0	\$0	\$0	\$0	\$0	\$0	\$0
6 Station Area Planning	\$0	\$0	\$0	\$0	\$0	\$0	\$0	\$0	\$0	\$0	\$0	\$0	\$0
7 Draft & Final EIR/EIS	\$0	\$0	\$0	\$0	\$0	\$0	\$0	\$0	\$0	\$0	\$0	\$0	\$0
8 Certification of EIR/EIS & ROD	\$3,871,025	\$247,289	\$402,190	\$323,325	\$456,874	\$159,726	\$333,619	\$319,530	\$312,919	\$328,565	\$344,211	\$343,811	\$298,966
9 ROW EIR/EIS Process	\$0	\$0	\$0	\$0	\$0	\$0	\$0	\$0	\$0	\$0	\$0	\$0	\$0
10 ROW Activities	\$5,025,556	\$313,380	\$443,485	\$446,662	\$485,870	\$483,949	\$477,950	\$597,673	\$415,132	\$353,619	\$370,458	\$340,923	\$296,455
ODC ODCs	\$0	\$0	\$0	\$0	\$0	\$0	\$0	\$0	\$0	\$0	\$0	\$0	\$0
Monthly Totals	\$11,614,355	\$734,382	\$1,158,405	\$1,022,574	\$1,263,193	\$797,095	\$1,065,237	\$1,120,547	\$943,998	\$908,929	\$919,497	\$898,871	\$781,627
Cumulative Totals		\$734,382	\$1,892,787	\$2,915,361	\$4,178,554	\$4,975,649	\$6,040,886	\$7,161,433	\$8,105,431	\$9,014,360	\$9,933,857	\$10,832,728	\$11,614,355

Program Total Hours / Dollars

Hour Summary	FY 2006 -2014									
HOURS										
Budgeted	Total	2006/07	2007/08	2008/09	2009/10	2010/11	2011/12	2012/13	2013/14	
1 Project Management	38,017	410	145	1,200	3,784	6,276	7,807	9,425	8,970	
2 Public / Agency Participation	24,701	143	1,163	3,372	2,277	3,242	6,007	3,578	4,919	
3 Alternative Analysis	12,144	355	53	5,700	5,343	694	-	-	-	
4 Engineering										
15% Preliminary Engineering	70,741	249	-	3,000	18,089	48,125	1,278	-	-	
30% Preliminary Engineering	152,991	-	-	-	-	-	38,433	11,657	102,901	
5 EIR / EIS Analysis	131,642	1,020	532	7,000	28,134	68,728	26,229	-	-	
6 Station Area Planning	4,193	-	-	1,330	2,294	570	-	-	-	
7 Draft & Final EIR/EIS	34,551	-	-	-	1,290	9,306	23,955	-	-	
8 Certification of EIR/EIS & ROD	60,449	-	-	-	-	30	12,153	36,810	11,456	
9 ROW EIR/EIS Process	5,446	-	-	-	-	42	5,404	-	-	
10 ROW Activities	117,541	-	-	-	-	-	28,032	53,395	36,114	
ODC ODCs	-	-	-	-	-	-	-	-	-	
Totals	652,416	2,177	1,892	21,602	61,211	137,012	149,297	114,865	164,360	
Actual / Forecast	Total	2006/07	2007/08	2008/09	2009/10	2010/11	2011/12	2012/13	2013/14	
1 Project Management	35,480	410	145	785	2,953	6,276	7,739	8,203	8,970	
2 Public / Agency Participation	25,849	143	1,163	3,082	3,063	3,242	6,277	3,961	4,919	
3 Alternative Analysis	16,594	355	53	4,287	11,206	694	-	-	-	
4 Engineering										
15% Preliminary Engineering	62,837	249	-	271	12,914	48,125	1,278	-	-	
30% Preliminary Engineering	143,080	-	-	-	-	-	32,036	8,143	102,901	
5 EIR / EIS Analysis	137,986	1,020	532	1,743	33,768	68,728	32,197	-	-	
6 Station Area Planning	3,093	-	-	552	1,972	570	-	-	-	
7 Draft & Final EIR/EIS	41,749	-	-	-	-	9,306	32,444	-	-	
8 Certification of EIR/EIS & ROD	52,384	-	-	-	-	30	7,451	33,447	11,456	
9 ROW EIR/EIS Process	5,446	-	-	-	-	42	5,404	-	-	
10 ROW Activities	115,853	-	-	-	-	-	28,032	51,707	36,114	
ODC ODCs	-	-	-	-	-	-	-	-	-	
Monthly Totals	640,352	2,177	1,892	10,719	65,874	137,012	152,856	105,462	164,360	
Cumulative Totals		2,177	4,069	14,788	80,663	217,675	370,530	475,992	640,352	

Cost Summary		FY 2006-2014								
DOLLARS										
Budgeted	Total	2006/07	2007/08	2008/09	2009/10	2010/11	2011/12	2012/13	2013/14	
1 Project Management	\$5,695,744	\$96,458	\$35,642	\$166,087	\$526,999	\$1,021,639	\$1,156,364	\$1,334,034	\$1,358,521	
2 Public / Agency Participation	\$3,043,022	\$29,776	\$188,260	\$341,001	\$366,931	\$355,898	\$861,211	\$368,893	\$531,053	
3 Alternative Analysis	\$2,079,159	\$33,819	\$8,395	\$522,722	\$1,450,484	\$63,739	\$0	\$0	\$0	
4 Engineering										
15% Preliminary Engineering	\$8,210,722	\$51,166	\$0	\$60,393	\$1,858,126	\$6,051,827	\$189,210	\$0	\$0	
30% Preliminary Engineering	\$21,311,203	\$0	\$0	\$0	\$0	\$0	\$4,863,206	\$1,688,139	\$14,759,858	
5 EIR / EIS Analysis	\$16,223,046	\$103,203	\$84,576	\$208,702	\$4,382,677	\$7,915,585	\$3,528,303	\$0	\$0	
6 Station Area Planning	\$488,467	\$0	\$0	\$78,660	\$321,976	\$87,831	\$0	\$0	\$0	
7 Draft & Final EIR/EIS	\$4,219,725	\$0	\$0	\$0	\$0	\$956,964	\$3,262,761	\$0	\$0	
8 Certification of EIR/EIS & ROD	\$6,634,277	\$0	\$0	\$0	\$0	\$7,954	\$894,745	\$4,404,728	\$1,326,850	
9 ROW Effort EIR/EIS Process	\$509,645	\$0	\$0	\$0	\$0	\$10,598	\$499,047	\$0	\$0	
10 ROW Activities	\$12,367,583	\$0	\$0	\$0	\$0	\$0	\$3,237,325	\$5,500,000	\$3,630,258	
ODC ODCs	\$0	\$0	\$0	\$0	\$0	\$0	\$0	\$0	\$0	
Totals	\$80,782,593	\$314,421	\$316,872	\$1,377,565	\$8,907,194	\$16,472,035	\$18,492,172	\$13,295,794	\$21,606,540	
Actual / Forecast	Total	2006/07	2007/08	2008/09	2009/10	2010/11	2011/12	2012/13	2013/14	
1 Project Management	\$5,586,836	\$96,458	\$35,642	\$166,087	\$526,999	\$1,021,639	\$1,194,052	\$1,187,438	\$1,358,521	
2 Public / Agency Participation	\$3,119,083	\$29,776	\$188,260	\$341,001	\$366,931	\$355,898	\$946,072	\$360,093	\$531,053	
3 Alternative Analysis	\$2,079,159	\$33,820	\$8,395	\$522,722	\$1,450,484	\$63,739	\$0	\$0	\$0	
4 Engineering										
15% Preliminary Engineering	\$8,204,724	\$51,167	\$0	\$60,393	\$1,858,126	\$6,051,827	\$183,210	\$0	\$0	
30% Preliminary Engineering	\$20,419,070	\$0	\$0	\$0	\$0	\$0	\$4,488,969	\$1,170,243	\$14,759,858	
5 EIR / EIS Analysis	\$16,207,245	\$103,203	\$84,576	\$208,702	\$4,382,677	\$7,915,585	\$3,512,502	\$0	\$0	
6 Station Area Planning	\$488,467	\$0	\$0	\$78,660	\$321,976	\$87,831	\$0	\$0	\$0	
7 Draft & Final EIR/EIS	\$4,444,646	\$0	\$0	\$0	\$0	\$956,964	\$3,487,682	\$0	\$0	
8 Certification of EIR/EIS & ROD	\$6,044,115	\$0	\$0	\$0	\$0	\$7,954	\$838,286	\$3,871,025	\$1,326,850	
9 ROW EIR/EIS Process	\$509,645	\$0	\$0	\$0	\$0	\$10,598	\$499,047	\$0	\$0	
10 ROW Activities	\$11,893,139	\$0	\$0	\$0	\$0	\$0	\$3,237,325	\$5,025,556	\$3,630,258	
ODC ODCs	\$0	\$0	\$0	\$0	\$0	\$0	\$0	\$0	\$0	
Monthly Totals	\$78,996,129	\$314,423	\$316,872	\$1,377,565	\$8,907,194	\$16,472,035	\$18,387,145	\$11,614,355	\$21,606,540	
Cumulative Totals		\$314,423	\$631,295	\$2,008,860	\$10,916,054	\$27,388,089	\$45,775,234	\$57,389,589	\$78,996,129	
<i>Italics = Forecast</i>										

Physical Percent Complete - Program Total* (Actual/Forecast)										
	2006/07	2007/08	2008/09	2009/10	2010/11	2011/12	2012/13	2013/14		
1 Project Management	2%	2%	5%	15%	33%	54%	76%	100%		
2 Public / Agency Participation	1%	7%	18%	30%	41%	71%	83%	100%		
3 Alternative Analysis	2%	2%	27%	97%	100%	100%	100%	100%		
4 Engineering										
15% Preliminary Engineering	1%	1%	1%	24%	98%	100%	100%	100%		
30% Preliminary Engineering	0%	0%	0%	0%	0%	22%	28%	100%		
5 EIR / EIS Analysis	1%	1%	2%	29%	78%	100%	100%	100%		
6 Station Area Planning	0%	0%	16%	82%	100%	100%	100%	100%		
7 Draft & Final EIR/EIS	0%	0%	0%	0%	22%	100%	100%	100%		
8 Certification of EIR/EIS & ROD	0%	0%	0%	0%	0%	14%	78%	100%		
9 ROW Effort EIR/EIS Process	0%	0%	0%	0%	2%	100%	100%	100%		
10 ROW Activities	0%	0%	0%	0%	0%	27%	69%	100%		
TOTAL Annual PROGRESS	0%	1%	3%	14%	35%	58%	73%	100%		
*Physical Percent Complete = Actual Cost / (Actual Cost + Estimate Cost to Completion)										



California High Speed Rail Authority

Cost Performance Report
January 2013

Merced-Fresno

Planned Progress 67.7%
Actual Progress 65.7%

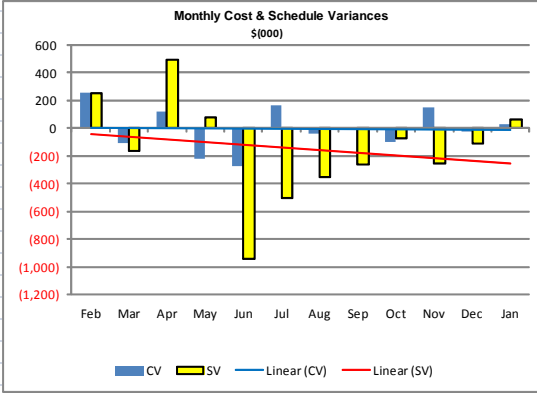
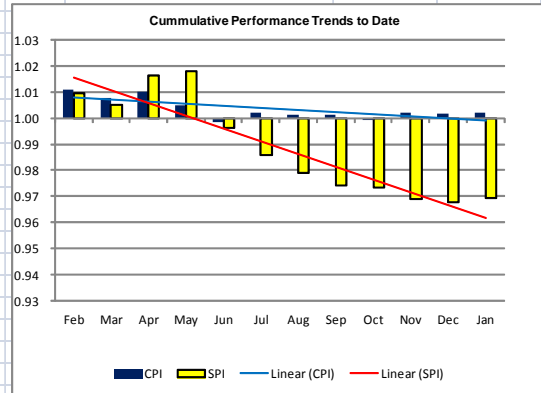
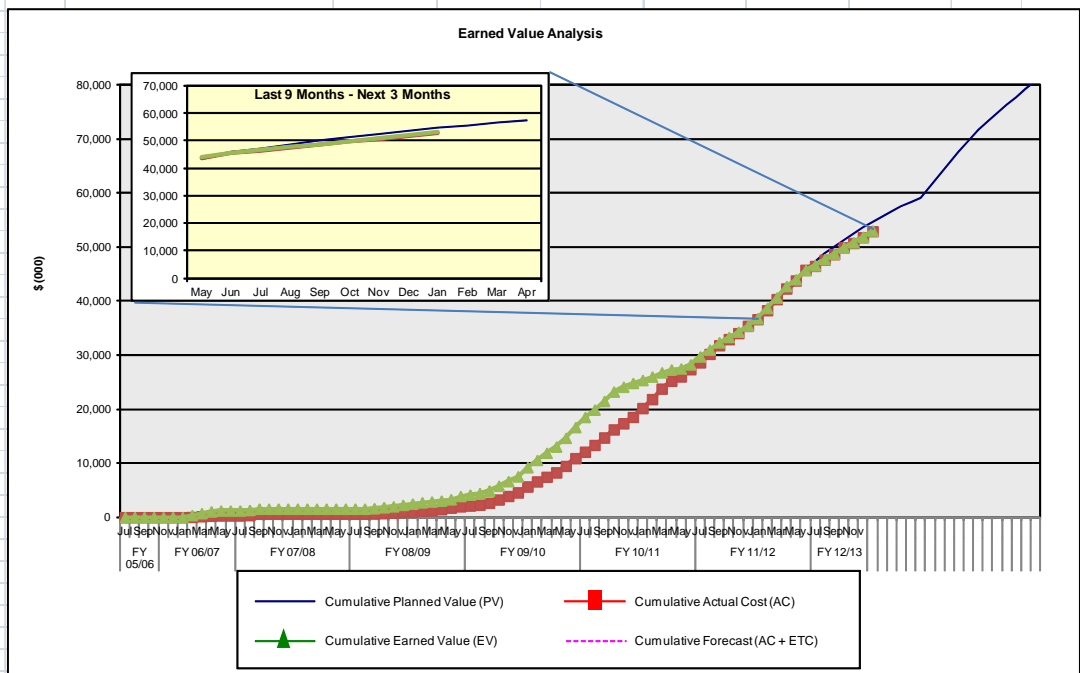


Dollar amounts in thousands

WBS	Task	Total Labor Budget* (BAC)	Planned (PV)	Actual Cost (AC)	Earned (EV)	Forecast (ETC)	Total Cost (EAC)	CPI	SPI
1	Project Management	\$5,696	\$3,876	\$3,767	\$3,813	\$1,819	\$5,587	1.01	0.98
2	Public / Agency Participation	\$3,043	\$2,363	\$2,439	\$2,404	\$680	\$3,119	0.99	1.02
3	Project Definition	\$2,079	\$2,079	\$2,079	\$2,079	\$0	\$2,079	1.00	1.00
4	Preliminary Engineering	\$29,522	\$14,324	\$13,426	\$13,389	\$15,197	\$28,624	1.00	0.93
4.1	Infrastructure 15%	\$8,211	\$8,211	\$8,205	\$8,211	\$0	\$8,205	1.00	1.00
4.11	Infrastructure 30%	\$21,311	\$6,114	\$5,222	\$5,179	\$15,197	\$20,419	0.99	0.85
5	ER/EIS Analysis	\$16,223	\$16,203	\$16,207	\$16,229	\$0	\$16,207	1.00	1.00
6	Station Area Planning	\$488	\$488	\$488	\$489	\$0	\$488	1.00	1.00
7	Draft and Final ER/EIS	\$4,220	\$4,220	\$4,445	\$4,221	\$0	\$4,445	0.95	1.00
8	Certification of ER/EIS and ROD	\$6,634	\$3,679	\$3,089	\$3,118	\$2,955	\$6,044	1.01	0.85
9	ROW ER/EIS Process	\$510	\$510	\$510	\$510	\$0	\$510	1.00	1.00
10	ROW Activities	\$12,368	\$6,961	\$6,486	\$6,802	\$5,407	\$11,893	1.05	0.98
ODC	Other Direct Costs *	\$0	\$0	\$0	\$0	\$0	\$0	NA	NA
Total		\$80,783	\$54,723	\$52,937	\$53,053	\$26,059	\$78,996	1.00	0.97

* Total Labor Budget - is the planned cost of all work less Other Direct Costs (ODCs).

Current Cost Variance (CV) to Date (EV - AC):	\$116	Percent under (+) or over (-) budget	0.2%	UNDER BUDGET
Current Schedule Variance (SV) to Date (EV - PV):	(\$1,670)	Percent ahead (+) or behind (-) schedule	-3.1%	BEHIND SCHEDULE



Deliverables Status (Percent Complete)

Task	Sub-task	Deliverable	Version	Start Date	Due Date	Date Delivered	Percent Complete	ProjectSolve Location
1	1.1	Project Management Plan	Draft	7/30/09	7/30/09	7/30/09	100%	
1	1.1	Project Management Plan	Revised	8/21/09	10/1/09	8/25/09	100%	https://ww3.projectsolve2.com/eRoom/SFOF/CAHSRProgramMgmt/0_53641
2	2.1	Public Participation Plan	Draft	7/1/09	7/24/09	7/24/09	100%	
2	2.1	Public Participation Plan	Revised	8/15/09	8/30/09	9/1/09	100%	https://ww3.projectsolve2.com/eRoom/SFOF/CHSTP-MercedtoFresnoSection/0_59376
2	2.2	Agency Coordination Plan	Draft	8/15/09	8/14/09	8/14/08	100%	
2	2.2	Agency Coordination Plan	Revised	8/14/09	12/9/10	8/25/09	100%	https://ww3.projectsolve2.com/eRoom/SFOF/CHSTP-MercedtoFresnoSection/0_72ec1
3	3.1	NOI/NOP	Revised	2/2/09	3/10/09	3/10/09	100%	https://ww3.projectsolve2.com/eRoom/SFOF/CHSTP-MercedtoFresnoSection/0_5934e
3	3.2	Prior Studies Technical Memorandum	Draft	1/1/09	4/27/09	9/11/09	100%	https://ww3.projectsolve2.com/eRoom/SFOF/CHSTP-MercedtoFresnoSection/0_60c87
3	3.2	Scoping Report	Revised	3/09	4/09	4/09	100%	https://ww3.projectsolve2.com/eRoom/SFOF/CHSTP-MercedtoFresnoSection/0_59351
3	3.3	Refine Purpose and Need	Draft	4/10	7/10	10/4/10	100%	https://ww3.projectsolve2.com/eRoom/SFOF/CHSTP-MercedtoFresnoSection/0_59a8a
3	3.4	Alternatives Analysis Report	Draft	10/09	11/09	3/1/10	100%	
3	3.4	Alternatives Analysis Report	Revised	11/09	3/29/10	4/7/10	100%	https://ww3.projectsolve2.com/eRoom/SFOF/CHSTP-MercedtoFresnoSection/0_59b95
3	3.4	Supplemental AA Report	Draft	4/7/10	7/29/10	7/29/10	100%	https://ww3.projectsolve2.com/eRoom/SFOF/CHSTP-MercedtoFresnoSection/0_9d43c
3	3.5	Project Description	Draft	11/09	7/27/10	10/4/10	100%	https://ww3.projectsolve2.com/eRoom/SFOF/CHSTP-MercedtoFresnoSection/0_59a8a
3	3.6	Existing Transportation Conditions	Draft	4/7/10	9/30/10	9/30/10	100%	https://ww3.projectsolve2.com/eRoom/SFOF/CHSTP-MercedtoFresnoSection/0_59a3e
4	4.1.9	15% Draft Hydraulic & Floodplain	Draft	7/1/10	10/28/10	12/9/10	100%	https://ww3.projectsolve2.com/eRoom/SFOF/CHSTP-MercedtoFresnoSection/0_b0f04
4	4.1.9	15% Draft SWDR	Draft	7/1/10	12/10/10	12/9/10	100%	https://ww3.projectsolve2.com/eRoom/SFOF/CHSTP-MercedtoFresnoSection/0_b0f04
4	4.1.9	15% Draft SWMP	Draft	7/1/10	12/10/10	12/9/10	100%	https://ww3.projectsolve2.com/eRoom/SFOF/CHSTP-MercedtoFresnoSection/0_b0f04

Task	Sub-task	Deliverable	Version	Start Date	Due Date	Date Delivered	Percent Complete	ProjectSolve Location
4.	4.1.11	Geotechnical Report BNSF & Wyes	Draft	7/1/10	12/23/10	12/23/10	100%	https://ww3.projectsolve2.com/eRoom/SFOF/CHSTP-MercedtoFresnoSection/0_b0f04
4.	4.1.11	Geotechnical Report BNSF & Wyes	Draft	7/1/10	12/23/10	12/23/10	100%	https://ww3.projectsolve2.com/eRoom/SFOF/CHSTP-MercedtoFresnoSection/0_b0f04
4	4.1.11	Geotechnical Report UPRR-SR99	Draft	7/1/10	12/23/10	12/23/10	100%	https://ww3.projectsolve2.com/eRoom/SFOF/CHSTP-MercedtoFresnoSection/0_b0f04
4	4.1.13	Right Of Way Report	Draft	7/1/10	12/23/10	12/23/10	100%	https://ww3.projectsolve2.com/eRoom/SFOF/CHSTP-MercedtoFresnoSection/0_b0f04
4	4.9.1	15% In-Progress Track Alignment Submittal	In-progress	7/1/10	10/28/10	10/28/10	100%	https://ww3.projectsolve2.com/eRoom/SFOF/CHSTP-MercedtoFresnoSection/0_acad5
4	4.9.2	15% In-Progress Structure Plan Submittal	In-progress	7/1/10	10/26/10	10/26/10	100%	https://ww3.projectsolve2.com/eRoom/SFOF/CHSTP-MercedtoFresnoSection/0_ad350
4	4.9.3	15% In-Progress Station Plan Submittal	In-progress	7/1/10	10/26/10	10/26/10	100%	https://ww3.projectsolve2.com/eRoom/SFOF/CHSTP-MercedtoFresnoSection/0_ada7f
4	4.9.3	Maintenance Facilities Report	Draft	7/1/10	12/23/10	12/23/10	100%	https://ww3.projectsolve2.com/eRoom/SFOF/CHSTP-MercedtoFresnoSection/0_b0f04
4	4.9.5	15% In-Progress Traction Power Plan Submittal	In-progress	7/1/10	10/26/10	10/26/10	100%	https://ww3.projectsolve2.com/eRoom/SFOF/CHSTP-MercedtoFresnoSection/0_ada76
4	4.9.5	15% Utility Report Submittal	Draft	7/1/10	10/28/10	12/23/10	100%	https://ww3.projectsolve2.com/eRoom/SFOF/CHSTP-MercedtoFresnoSection/0_b0f04
4	4.9.15	15% In-Progress Roadway Plan Submittal	In-progress	7/1/10	10/26/10	10/26/10	100%	https://ww3.projectsolve2.com/eRoom/SFOF/CHSTP-MercedtoFresnoSection/0_ad12c
4	4.9.7	15% Draft Design Full Package submittal	Draft	10/26/10	11/23/10	12/23/10	100%	https://ww3.projectsolve2.com/eRoom/SFOF/CHSTP-MercedtoFresnoSection/0_59aed
4	4.9.7	Record Set 15% Draft Design Submittal	Record Set	12/23/10	2/24/11	5/03/11	100%	CD
4	4.9.9	15% Final Design Full Package submittal	Final		12/30/10	8/1/11	100%	https://ww3.projectsolve2.com/eRoom/SFOF/CHSTP-MercedtoFresnoSection/0_59ae4
4	4.9.9	15% Final Station Design Site C	Final		6/30/11	6/29/11	100%	https://ww3.projectsolve2.com/eRoom/SFOF/CHSTP-MercedtoFresnoSection/0_59ae4
4	4.19.1	In-Progress Procurement Contract Package 1A	Draft	7/1/11	8/30/11	8/30/11	100%	https://ww3.projectsolve2.com/eRoom/SFOF/CHSTP-MercedtoFresnoSection/0_cc5a1
4	4.19.1	Draft Procurement Contract Package 1A	Draft	9/1/11	9/30/11	9/30/11	100%	https://ww3.projectsolve2.com/eRoom/SFOF/CHSTP-MercedtoFresnoSection/0_59adb

Task	Sub-task	Deliverable	Version	Start Date	Due Date	Date Delivered	Percent Complete	ProjectSolve Location
4	4.19.2	Draft /Final Procurement Contract Package 1A	Draft/ Final	10/1/11	11/11/11	11/11/11	100%	https://ww3.projectsolve2.com/eRoom/SFOF/CHSTP-MercedtoFresnoSection/0_cfbe5
4	4.11.1	Survey & Mapping- Trackway	final	8/1/12	12/25/12	12/21/12	100%	
4	4.11.1	Survey & Mapping- Channels	final	8/1/12	12/25/12		85%	
4	4.11.2	Alignment –Plan & Profiles design files	draft	12/25/12	2/28/13		10%	
4	4.11.5	Structures- review with data	draft	8/1/12	4/23/13		0%	
4	4.11.9	H&H for permitting	draft	8/5/12	1/2/13		85%	
4	4.11.10	Utilities	draft	8/1/12	12/28/12		0%	
4	4.11.11	Geotech Baseline Report	final	8/1/12	10/12/12		99%	
4	4.11.15	Roadway facility review	draft	10/9/12	4/15/13		0%	
5	5.2.1	Transportation TR	Final	6/1/11	8/30/11	8/12/11	100%	https://ww3.projectsolve2.com/eRoom/SFOF/CHSTP-MercedtoFresnoSection/0_596fe
6	6.2	Station Area Development Planning Document	Draft	5/7/10	7/30/11	7/30/11	100%	
7	7.1	Prepare Admin Draft EIR/EIS	Draft	7/1/10	9/30/10	10/5/10	100%	https://ww3.projectsolve2.com/eRoom/SFOF/CHSTP-MercedtoFresnoSection/0_598f3
7	7.2	Prepare Draft EIR/EIS	Revised	1/1/11	7/13/11	7/25/11	100%	https://ww3.projectsolve2.com/eRoom/SFOF/CHSTP-MercedtoFresnoSection/0_598f3
7	7.2	Draft EIR/EIS	FINAL	7/13/11	8/3/11	8/3/11	100%	https://ww3.projectsolve2.com/eRoom/SFOF/CHSTP-MercedtoFresnoSection/0_598f3
7	7.3	Admin DRAFT/FINAL EIR/EIS	Draft	10/15/11	12/30/11	12/30/11	100%	https://ww3.projectsolve2.com/eRoom/SFOF/CHSTP-MercedtoFresnoSection/0_59713
7	7.6	Final EIR/EIS	Final	2/1/12	4/9/12	4/10/12	100%	https://ww3.projectsolve2.com/eRoom/SFOF/CHSTP-MercedtoFresnoSection/0_59713
7	7.6	Appendices	Final	2/12/12	4/10/12	2/27/12	100%	https://ww3.projectsolve2.com/eRoom/SFOF/CHSTP-MercedtoFresnoSection/0_d4d50
7	7.6	Volume III Plans	Final	2/12/12	4/10/12	4/5/12	100%	https://ww3.projectsolve2.com/eRoom/SFOF/CHSTP-MercedtoFresnoSection/0_d7a15
8	8.4.1	USACE 404 Permit	Final	4/6/11	6/29/13		50%	
8	8.4.2	SWRCB – 401 Certification	Final	7/2/12	5/7/13		50%	
8	8.4.3	CDFG – 1602 Agreements	Final	6/1/12	4/30/13		50%	
8	8.4.4	Section 106 Consultation	Final	4/2/12	4/18/13		50%	
8	8.4.5	CDFG 2081 Permit	Final	3/26/12	6/7/13		50%	
8	8.4.7	Permittee-Responsible Mitigation Site Survey	Final	4/2/12	3/18/13		50%	
8	8.4.8.1	FOE Addendum	Final	2/13	3/13		0%	
8	8.4.8.2	ATP Addendum	Final	2/13	3/13		0%	
8	8.4.8.3	BETP Addendum	Final	1/13	3/13		0%	
8	8.4.8.4	Monthly Progress Reports and Supplemental Section 106 Documents	Final	1/13	6/13		0%	

8	8.4.8.5	Identification Level Archaeological Surveys	Final	1/13	6/13		0%	
8	8.4.8.6	Geoarchaeological Surveys	Final	1/13	4/13		0%	
8	8.4.8.7	Preconstruction Conditions Assessments	Final	1/13	4/13		0%	
8	8.4.8.8	Plans for Protection and Stabilization	Final	3/13	5/13		0%	
8	8.4.8.9	Response Plans for Unanticipated Effects	Final	3/13	5/13		0%	
8	8.4.8.10	Plans for Noise/Vibration Effects	Final	3/13	5/13		0%	
8	8.4.8.11	HABS/HAER/HALS Documentation	Final	4/13	5/13		0%	
8	8.4.8.12	Historic Preservation Design Review	Final	TBD	TBD		0%	
8	8.4.8.13	Extended Phase I Archaeological Survey	Final	1/13	5/13		0%	
8	8.4.8.14	Intensive Level Archaeological Investigations	Final	2/13	6/13		0%	
8	8.4.8.15	Data Recovery Investigations	Final	3/13	6/13		0%	
8	8.4.9	Support for Litigation and Construction (MM+)	Final	7/1/12	6/30/13		50%	
8	8.4.10	Support for Additional Enviro Analysis (Design Refinements)	Final	7/1/12	6/30/12		25%	
8	8.4.12	402 Waste Discharge Report	Final	9/12	FY13/14		10%	
8	8.4.13	Administrative Record	Final	12/1/12	6/30/13		0%	

Key Developments and Accomplishments

Environmental:

The team continued work on permit applications as well as preparation of the permittee-responsible mitigation plan in support of permit applications. Furthermore, the team supported planning for implementation of mitigation at five mitigation sites and commenced initial review of information available for two additional sites (JCR Ranch and Yosemite Lake). The 2081 permit application, the permittee-responsible mitigation plan, the regulatory framework for stormwater management, and impact/mitigation data for the COE were submitted to the PMT for review in December. Completed support for PMT’s cost estimating effort.

Engineering: Continued support to PMT and Authority on CP1 and agency permitting. Continued to support CVFPB and USACE on hydraulic studies needed for 408/208.10 permits.

Task 1. Project Management

- a) Monthly Progress Report covering December 2012 was prepared and transmitted to the Program Management Team (PMT) for review.
- b) Processed invoice and transmitted it to CHSRA.
- c) Responded to request for information regarding Master Personnel Request (MPR) database by the PMO. Received resolution and an updated MPR from the PMO on Jan 23rd.
- d) Participated in several coordination meetings among task leaders.
- e) Participated in weekly meetings with Regional Program Manager.

- f) Participated in weekly Engineering meetings.
- g) Participated in bi-weekly joint ROW meetings with URS team and the Authority (i.e., Patricia Jones and her staff).
- h) Revised and submitted project schedule weekly to reflect changes to delivery dates. Revised and submitted CR#152 for comment to the PMO & PMT. Responded to comments and incorporated revisions into AWP rev 4. Three complete binders were submitted to the Authority on Feb 1st.
- i) Met on January 24 with four stakeholder business owners that will be relocated by the HST in Merced. Our team consisted of Authority, PMT and AECOM staff.

CH2M Hill

- a) Participated in MF Management Team/PMT Coordination Meetings (Jan 9th, 16th, 23rd, and 30th).
- b) Coordinated meetings and teleconferences with AECOM.
- c) Coordinated meetings and teleconferences with PMT.
- d) Prepared weekly schedule updates for internal task-tracking purposes.
- e) Supported AWP v4 efforts, including responses to PMT/PMO comments.
- f) Conducted administrative activities including contract/subcontract management and task/budget reconciliation.

Task 1.6 Special Projects

Civil Site Design/Planning for Klein's Truck Stop

- a) Finalized review comments from the HSR Authority on the Klein's Truck Stop [Millennium Acquisitions] exhibit in support of their schedule to submit a 'Notice of Decision to Appraise' the parcels involved.
- b) QC was performed on the exhibit, and it was transmitted to the Authority and other concerned parties.

Task 2. Public Participation Program

- a) Completed the following tasks related to regional and statewide communications:
 - o Worked with Authority Communications and Regional Communications Team to develop outreach strategy and determine outreach and communication priorities for the Merced to Fresno Project Section.
 - o Managed and responded to stakeholder inquires.
 - o Identified and scheduled priority stakeholder meetings.
 - o Viewed January 23rd CHSRA Board meeting.
- b) Completed the following tasks related to project management:
 - o Submitted AWP scope changes.
 - o Submitted CommentSense monthly report (1/11).
 - o Managed stakeholder toll free phone number.
 - o Submitted weekly progress reports to environmental and communications teams (1/1, 1/8, 1/15, 1/22, 1/29).

- Completed December progress report (1/7).
 - Participated in weekly environmental coordination calls (1/7, 1/14, 1/21, 1/28).
 - Conducted weekly M-F outreach team coordination calls (1/3, 1/8, 1/15, 1/22, 1/29).
 - Attended monthly M-F AECOM Team meeting (1/30).
 - Participated in AECOM Management Team Weekly Conference Call (1/31).
- c) Completed the following tasks related to outreach:
- Drafted and mailed letters from Jeff Morales and Diana Gomez to the attendees of the December community meetings held in Madera and Merced.
 1. Translated letter into Spanish.
 - Scheduled and attended stakeholder meetings:
 1. Pazin & Myers (1/24).
 2. C & S Motors and Towing (1/24).
 3. Taco Bell (1/24).
 4. Cyril Lawrence (1/24).
 5. Fred Fagundes (1/25).
 - Attended swearing-in ceremony for Merced Supervisor John Pedrozo (1/4).
 - Attended UC Merced tribute to retiring Representative Dennis Cardoza (1/11).

CirclePoint

- a) Coordinated with SJ-M team on Wye outreach conducted to date.
- b) Coordinated with environmental team on communication with Fresno DMV to date.
- c) Managed stakeholder toll free phone number and returned calls.
- d) Managed and responded to 21 new CommentSense inquiries.
- e) Updated meeting log.
- f) Continued to update the project mailing list.
- g) Distributed follow-up thank you letters to December community meeting attendees.
- h) Completed December progress report and invoice.
- i) Participated in weekly M-F outreach team coordination calls (1/3, 1/8, 1/15, 1/22, 1/29).
- j) Attended monthly M-F AECOM team meeting (1/30).

Task 3. Project Definition

Task completed.

Task 4. Preliminary Engineering

4.1 15% Engineering

Fifteen Percent Engineering activities were completed by April 11, 2012.

4.11 Preliminary Engineering for Procurement

4.11.1 Surveys & Mapping (PSOMAS)

- a) No activity

4.11.2 Alignment & Typical Sections

- a) Completed initial Sandy Mush to downtown Merced alignment study to identify discrepancies between 15% and 30% mapping.
- b) Initiated top of rail profile adjustments to accommodate proposed under crossings of existing roads in Merced.

4.11.3 Temporary Construction Facilities

No Activity.

4.11.4 Stations

No Activity

4.11.5 Bridges and Elevated Structures

- a) Initiated design refinements of proposed under crossings of existing roads in Merced.

4.11.6 Tunnels

There are no HST tunnels in the M-F Segment of CP1.

4.11.7 Buildings

There are no HST buildings in the M-F Segment of CP1.

4.11.8 Grading & Drainage/Earthwork

No Activity.

4.11.9 Hydrology & Hydraulics (Floodplain Impacts) and Drainage (Storm Water)

No Activity.

4.11.10 Utilities

- a) Investigate issue regarding conflicts with a gas line and placement of columns of the straddle bents. Completed task and provided guidance to structural team.

4.11.11 Geotechnical (PARIKH)

No Activity.

4.11.12 Seismic Analyses

No application / no activity.

4.11.13 Right of Way

No Activity.

4.11.14 Construction Cost Estimate

- a) The AECOM team was asked to sign-off on the quantities provided for the portions of the design developed to 30%. In addition, the team was requested to review, comment upon the basis of estimate developed by others and, at a high level, review the unit rates also developed by others. This work was still in progress through January with completion scheduled for early February.

4.11.15 Roadway Plans
See CH2M Hill update below.

4.12 30% Systems
No Activity.

4.13 through 4.16 & 4.18 – Not Used in Current Scope of Work (SOW)

4.17 Capital Cost Estimate 30%
This activity is already covered under Task 4.11.14.

4.19 30% Design Submittals

4.19.1 Design Deliverables Required for Design-Build RFP
No activity.

4.19.2 Issue-for-Review Submittals
Completed.

4.19.3 Issue-for-Record Submittals
The Final “Issue-for-Record” submittals were completed on December 8th, 2011.

4.19.4 Final Electronic Files Submittals
No activity.

4.19 30% Design Submittals (Continue)

4.19.5 CP1A Support
No activity.

CH2M Hill Effort

- a) Participated in MF Management Team meeting (Jan. 30th). Participated in weekly PMT Coordination Meetings (Jan. 2nd, 9th, 16th, 23rd).
- b) Coordinated meetings and teleconferences with AECOM.
- c) Coordinated meetings and teleconferences with PMT.
- d) QA/QC of deliverables including PR.
- e) Coordinated with Caltrans and submittal of design exceptions and project report.
- f) Supported CVFPB and USACE on hydraulic studies needed for 408/208.10 permits.
- g) Prepared Addendum 6 design documents.
- h) Provided design refinement options for access, utility easement, and systems/operations.
- i) Provided Golden State Boulevard alignment refinements.
- j) Supported profile vertical realignment.
- k) Reviewed Survey Data prepared for Duck Slough and Miles Creek.
- l) Requested Merced OH CAD files from District 6.

Task 5. Project Level Environmental Impact Analysis

This task is complete.

Task 6. Station Area Development Planning

This task is complete.

Task 7. Prepare Draft and Final Project Level EIR/EIS Document

No Activity.

Task 8 Certification of EIR/EIS Documents and Permitting

- a) Participated in FRA Environmental Coordination Update conference calls.
- b) Participated in PMT Environmental Coordination conference calls.

Permitting

- a) Prepared and participated in weekly USFWS and CDFW meetings and joint FB/MF meetings.
- b) Continued to review design changes, as needed, in accordance with PMT's anticipated change control process.
- c) Participated in ROW utility review.
- d) Supported work on permit applications, including continuous planning for execution of work in FY12/13 (e.g., for change requests).
- e) Supported preparation of a ROW access plan for cultural and biological surveys.
- f) Continued to prepare permit applications.
- g) Submitted final CRAM reports for the mitigation sites to regulatory agencies.
- h) Submitted final environmental site assessment reports for the mitigation sites to regulatory agencies.

Cultural Resources

- a) Completed revisions to the Finding of Effect Addendum, the Archaeological Treatment Plan Addendum, and the Built Environment Treatment Plan Addendum, incorporating comments from the PMT, Authority and FRA. Submitted to the Authority for transmittal to SHPO.
- b) Conducted first round of archaeological field surveys on parcels for which PTE had been granted.
- c) Continued to coordinate planning for field surveys on other parcels once PTE is granted, and identifying those parcels that are not constrained and suitable for construction.
- d) Coordinated with the PMT/Authority in the review of the Programmatic Agreement and identified areas for clarification, guidance, and refinement.

Biological Resources Permitting and Mitigation

- a) FY12/13 work planning (permit strategies and applications, field work, mitigation).
- b) 401 Water Quality Certification/402 NPDES (State Water Resources Control Board [SWRCB]) – coordinating re regulatory framework with agency. Prepared attachment with post-development design standards for PMT review.
- c) 404 Impacts to Waters of the US (incl. wetlands) (COE) – prepared and submitted to COE a list of impacts by feature and CRAM extrapolation information; continued work on miti-

gation ratios; Wetland Delineation Report to get revised PJD (Hybrid only); revised 404 permit (Hybrid only). Prepared 404 application for submittal to COE.

- d) 1602 Streambed Alteration Agreement (California Dept of Fish & Wildlife [CDFW]) – advanced development of Notification. Coordinated with irrigation districts and Authority Outreach regarding canals for which CDFW requests notification.
- e) 2081 Incidental Take Permit (CDFW) – prepared and submitted the draft 2081 application for CDFW review.
- f) Submitted final CRAM reports for the mitigation sites to regulatory agencies.
- g) Finalized the Draft Permittee-Responsible Mitigation Plan.
- h) Submitted final Phase I environmental site assessments for remaining two mitigation sites to regulatory agencies.

Other Environmental

- a) Provided litigation support to the AG’s office.
- b) Reviewed design changes (e.g., utility relocation, access roads). Prepared memoranda for Olive, Belmont, McKinley, and GSB.
- c) Supported ROW utility review.

Planned Activities Next Period

Task 1 Project Management

- a) Prepare, review and process Monthly Progress Report, Schedule updates, Earned Value Report and invoice.
- b) Prepare for and manage a project monthly status meeting on February 27th at AECOM’s Sacramento offices.
- c) Hold weekly meetings with PMT.
- d) Hold monthly meeting with PMO.
- e) Attend weekly Engineering meetings.
- f) Attend bi-weekly ROW meetings.
- g) Submit weekly project updates.
- h) Attend weekly Environmental coordination conference calls.
- i) Attend meetings with Merced business-owner stakeholders impacted by HST alignment.
- j) Attend meeting with Authority Finance & Accounting Team.

Task 1.6 Special Projects

Civil Site Design/Planning for Klein’s Truck Stop.

- a) Completed

Civil Site Design/Planning for Merced Evergreen Cemetery

- a) Requested to assist HSR Right of Way on the effort at Merced Evergreen Cemetery where the alignment is crossing an undeveloped parcel they own and plan to expand onto in the near future, but our proposed alignment will not allow that expansion to take place.

Task 2 Public Outreach and Communications

- a) Work with Authority Communications and Regional Communications Teams to develop outreach strategy and determine outreach and communication priorities for the Merced to Fresno Project Section.
- b) Manage and responded to stakeholder inquires.
- c) Identify and scheduled priority stakeholder meetings.
- d) Email attendees of Madera and Merced Community Meetings with link to sign-up for Authority email notifications.
- e) Submit weekly outreach report and meeting log to Authority.
- f) Schedule and attend meetings with Merced businesses impacted by alignment.
- g) Authority update to Merced City Council (2/4).
- h) Complete January progress report (2/5).
- i) Fred Fagundes meeting (2/8).
- j) Conduct weekly M-F outreach team coordination calls (2/5, 2/12, 2/19, 2/26).
- k) Participate in weekly environmental coordination calls (2/4, 2/11, 2/18, 2/25).
- l) Participate in AECOM Management Team Weekly Conference Call (2/7, 2/14, 2/21, 2/28).
- m) Submit CommentSense Monthly Report to Authority (2/15).
- n) Attend monthly M-F team meeting (2/27).

CirclePoint

- a) Attend monthly M-F team meeting (2/27).
- b) Monitor and process stakeholder inquiries via CommentSense.
- c) Support Wye public outreach activities and the supplemental environmental process.
- d) Conduct public outreach related activities.
- e) Coordinate with the Fresno to Bakersfield and San Jose to Merced teams as necessary.
- f) Update and refine the project mailing list.

Task 4 Preliminary Engineering

- a) Continue to support PMT communications team upon request.
- b) Complete final alignment and profile adjustments for HST alignment between Sandy Mush and downtown Merced.
- c) The AECOM team was asked to sign-off on the quantities provided for the portions of the design developed to 30%. This work has a completion scheduled for early February.

Psomas Effort

No activity anticipated.

CH2M Hill Effort

- a) Complete Project Report for Caltrans District 6.
- b) Continue coordination with District 10 on the ongoing Caltrans projects between Downtown Merced and north of Chowchilla.
- c) Continue to assist as needed on review of H&H Reports.
- d) Support Authority in Merced property owner meetings.
- e) Continue to refine Golden State Boulevard as needed.
- f) Incorporate City of Fresno comments on GSB alignment.

- g) Continue to support HST profile/alignment refinement.

Task 5 Environmental Review Work

- a) No activity anticipated.

Task 6 Station Area Development

- a) No activity anticipated.

Task 7 Prepare Project Level Draft and Final EIR/EIS Documents

- a) No activity anticipated.

Task 8 Certification of EIR/EIS Documents and Permitting

- a) Submit design change memoranda to PMT for review and address comments. Continue to evaluate design changes, as needed, in accordance with PMT's anticipated change control process.
- b) Participate in ROW utility review.
- c) Support preparation of a ROW access plan for cultural and biological surveys; conduct cultural and biology surveys of parcels for which access has been granted.
- d) Conduct surveys at mitigation sites.
- e) Submit to SHPO the addenda for Section 106 documents (FOE, ATP, BETP for downtown Fresno area).
- f) Continue pre-construction built environment and archaeological surveys and mitigation measures, in accordance with the Built Environment and Archaeological Treatment Plans.
- g) Finalize and submit to the regulatory agencies all permit applications. (e.g., 2081, 404, 401, 1602) and the PMRP.
- h) Support and participate in consultation meetings with permitting agencies and internal meetings with HSRA, AG, FB, FRA, and PMT.
- i) Provide litigation support, as needed.

Schedule and work product progress

Our Outreach effort continues to provide work sessions with the staff of each City, County, Water District and various other stakeholders to gain mutually acceptable solutions regarding mitigation of environmental impacts resulting from the Project. It is anticipated that permit applications and the mitigation plan will be submitted to regulatory agencies in early 2013.

AECOM		Section Summary Schedule								Merced to Fresno Section January 2013																					
		Planned Start Date	Planned Finish Date	Actual/Forecast Start Date	Actual/Forecast Finish Date	Total Planned To Date %	Total Physical % Complete	FY Planned % Complete	FY Actual % Complete	2009	2010	2011	2012	2013																	
Task 1 - Project Management															11	03	04	0	03	03	0	0	03	04	01	0	03	04	0	02	03
1 - Project Management																															
Task 2 - Public Participation Program																															
2 - Public Participation Program																															
Task 3 - Project Definition / Alternatives Analysis																															
3 - Project Definition/Alternatives Analysis																															
3.1 - Notice of Preparation/Notice of Intent																															
3.2 - Project Scoping																															
3.3 - Refine Project Purpose & Need																															
3.4 - Alternatives Analysis																															
3.4.5 - Preliminary AA																															
3.4.7 - AA Board Meeting																															
3.4.9 - Supplementary AA																															
Task 4 - Preliminary Engineering																															
4 - Preliminary Engineering																															
4.9.7 Final 15% Design Submittal Full Package																															
4.19.1 Draft Procurement Contract Package 1																															
4.19.2 Final Procurement Contract Package 1																															
Task 5 - EIR / EIS Analysis																															
5 - EIR/EIS Analysis																															
5.2 - Technical Reports																															
5.3 - EIR/EIS Baseline / Affected Environmental Analysis																															
Task 6 - Station Area Planning																															
6 - Station Area Planning																															
Task 7 - Draft and Final EIR / EIS																															
7 - Draft & Final EIR/EIS																															
7.1 - Prepare Administrative Draft EIR/EIS																															
7.2 - Prepare Draft EIR/EIS and Public Review																															
7.3 - Prepare Draft Final EIR/EIS																															
7.6 - Final EIR/EIS																															
7.6.11 Board Certifies Final EIR/EIS																															
Task 8 - Certification of EIR/EIS and ROD																															
8 - Certification of EIR/EIS & ROD																															
8.4 - Permitting																															
Task 10 - ROW Preservation and Acquisition																															
10 - ROW Activities																															
Total Section Progress Complete																															
Total Section Progress Complete																															
Project ID: MF_AECOM		Project Start: 05-Nov-08		Page 1 of 1		01-Feb-13		Primary Baseline		Mile...		Actual Work		Critical...		Remaining Work															
Layout Name: MF AECOM - RC PSS - R2 (AECOM)		Project Finish: 17-Sep-13		Section Summary Schedule		01-Feb-13																									
		Data Date: 26-Jan-13																													