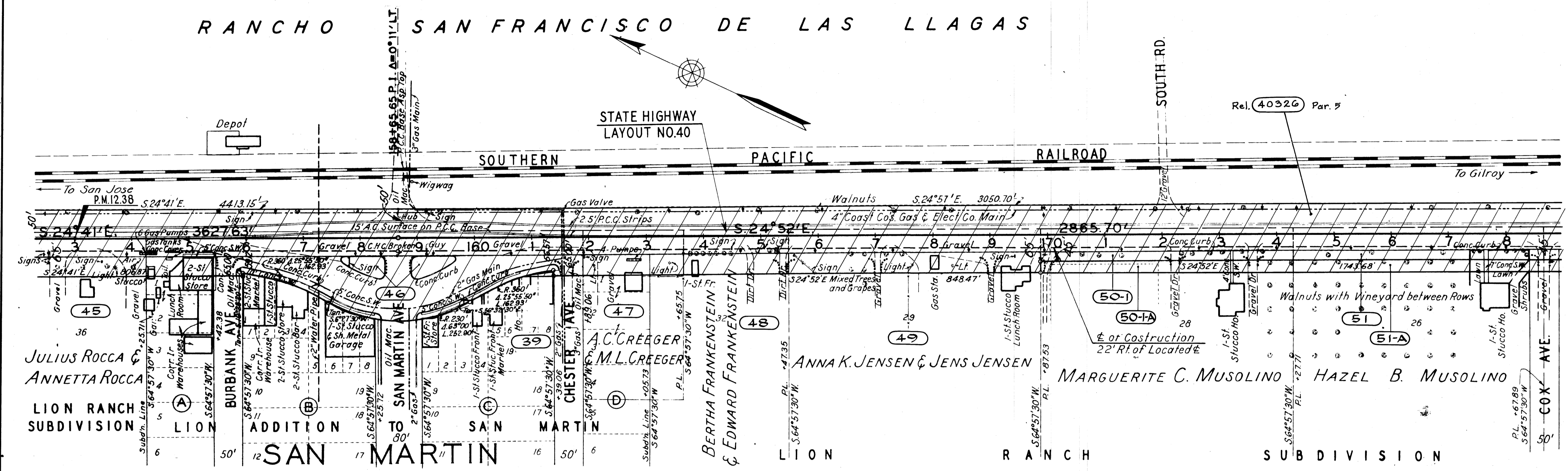
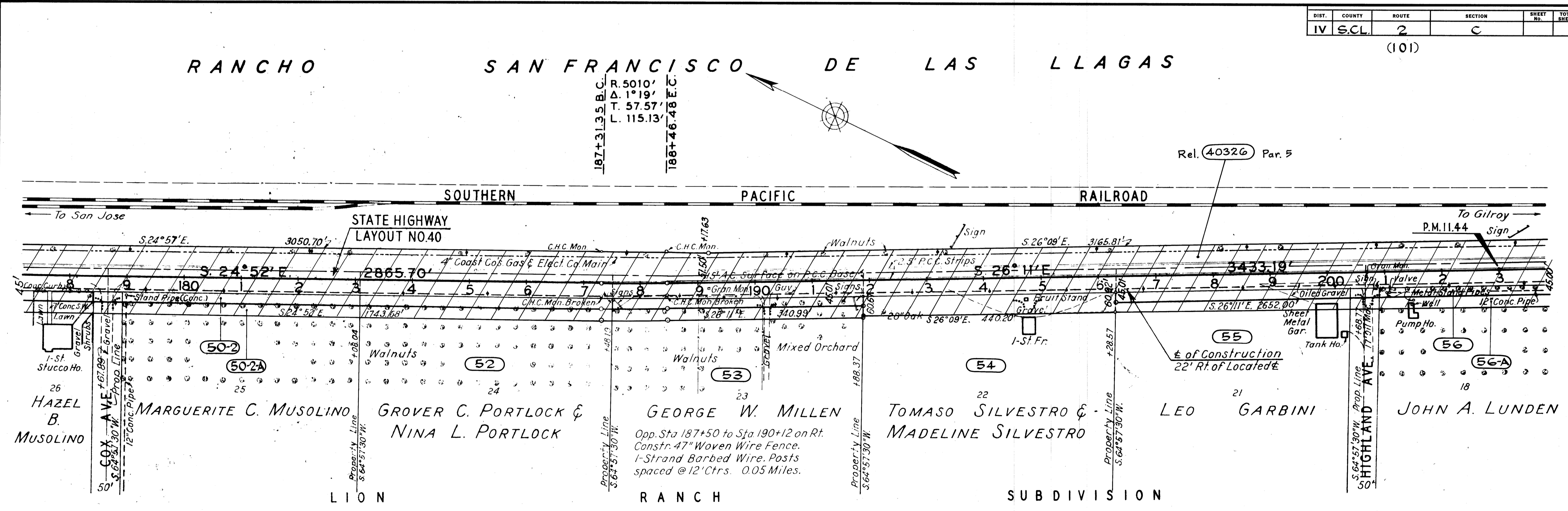


No.	Grantor	Area Acquired (A.C.E.)		Type Deed	Recordation		Remarks	
		Total	R/W		Date	Book Page		
3-9	Waldon Howard et ux	0.005		F	12-10-40	1015	390	
4-5	Julius Rocca et ux	0.859		F	12-9-40	1018	56	
4-6	Lion Ranch Company	0.11		F.O.C.	10-23-46	1403	210	
4-7	A.C. Creeger et ux	0.306		F.O.C.	1-20-41	1022	41	
4-8	Edward Frankenstein et ux	0.316		F	10-16-40	1011	13	
4-9	Jens Jensen et ux	0.711		F	10-16-40	1004	406	
5-0-1	Marguerite C. Musolino	0.875		F.O.C.	1-28-42	1069	546	
5-0-1A	Hazel B. Musolino	0.202		F.O.C.	1-28-42	1069	546	
5-1	Hazel B. Musolino	0.582						
5-1-A		0.192						
40326	State to County of Santa Clara			Rel.	6-3-79	443	301	Par. 5



No.	Grantor	Area Acquired (A.C.E.)		Type Deed	Recordation		Remarks	
		Total	R/W		Date	Book Page		
5-0-2	Marguerite C. Musolino	0.790		F.O.C.	1-28-42	1069	546	
5-2	Grover C. Portlock et ux	0.797		F	1-17-41	1013	490	
5-3	George W. Millen	0.779		F	4-3-41	1036	114	
5-4	Tomaso Silvestro et ux	0.727		F	9-7-38	895	244	
5-5	Leo Garbini et ux	0.566		F	12-18-40	1019	167	
5-6	John A. Lunden	1.815		F	1-6-42	1074	433	
5-0-2-A	Marguerite C. Musolino	0.202						
5-6-A	John A. Lunden	0.655						
40326	State to County of Santa Clara			Rel.	6-3-79	443	301	Par. 5



RIGHT-OF-WAY RECORD MAP  
 SCALE: 1"=100' R-504.19

R504021