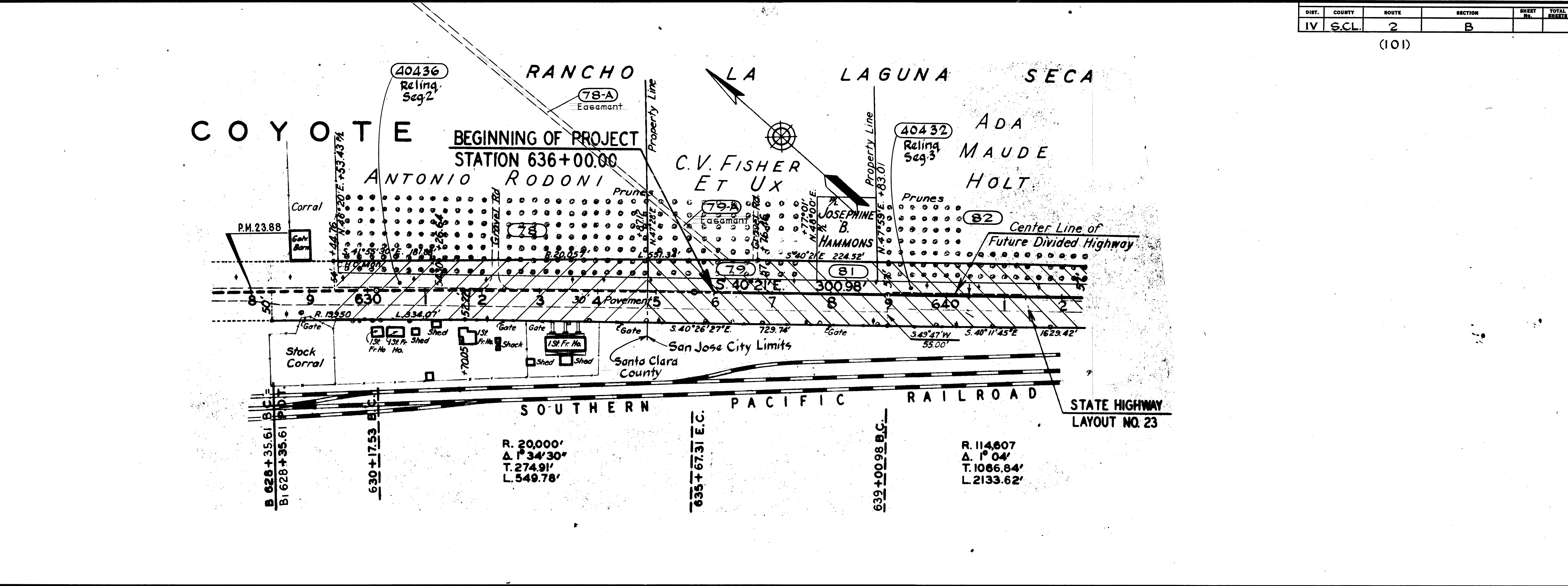


REVISION DATE
Conf to HF 3-91

DIST.	COUNTY	ROUTE	SECTION	SHEET NO.	TOTAL SHEETS
IV	SCL	2	B	(101)	

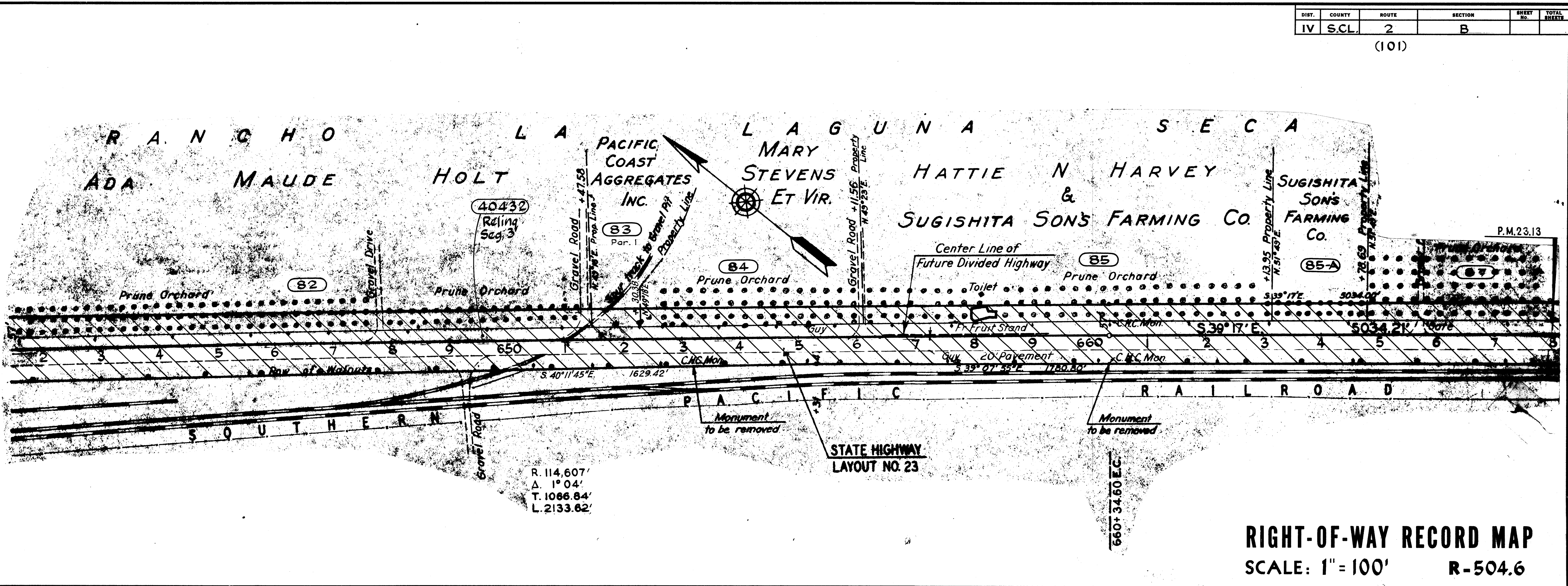
No.	Grantor	Area Acquired (A.C.±)		Type	Recordation		Remarks	
		Total	R/W		Date	Book		Page
78	Antonio Rodoni et ux	0.341		F	4-5-38	879	104	10 Strip Pipe Line Easement
78-A	"			E	1-7-38	879	262	"
79	C. V. Fisher et ux	0.227		F	5-24-38	878	223	10 Strip Pipe Line Easement
79-A	"			E	11-17-38	903	221	"
81	Josephine B. Hammon	0.084		F	12-17-37	834	335	
82	Ada Maude Holt et vir	0.93		F	15-28-38	878	224	
40432	Share to City of San Jose			Rel.	9-9-85	K674	2057	Seg. 3
40436	Share to County of Santa Clara			Rel.	10-1-87	K512	1791	Seg. 2



REVISION DATE
Conf to HF 3-91

DIST.	COUNTY	ROUTE	SECTION	SHEET NO.	TOTAL SHEETS
IV	SCL	2	B	(101)	

No.	Grantor	Area Acquired (A.C.±)		Type	Recordation		Remarks	
		Total	R/W		Date	Book		Page
82	Ada Maude Holt et vir	0.93		F	5-24-38	878	224	Parcel 1
83	Pacific Coast Aggregates Inc	0.056		F	2-24-38	861	407	
84	Mary Stevens et vir	0.288		F	12-17-37	850	450	
85	Sugishita Sons Farming Co.	0.524		F	2-24-38	866	450	
85-A	"	0.103		F	2-24-38	860	450	
87	Charles O. Becke	0.127		F	3-10-38	855	211	
40432	Share to City of San Jose			Rel.	9-9-85	K674	2057	Seg. 3



RIGHT-OF-WAY RECORD MAP
SCALE: 1" = 100' R-504.6

R504008