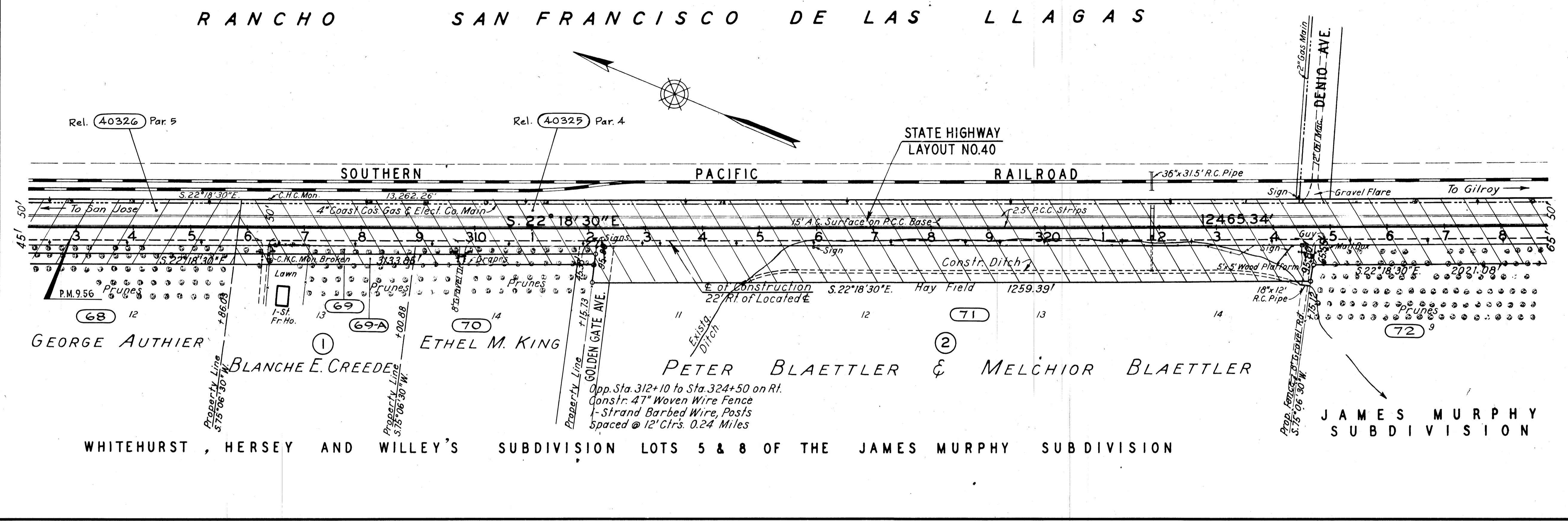


REVISIONS DATE  
 Added Rel. 40325 9-75  
 Conform to HF 3-91

DIST.	COUNTY	ROUTE	SECTION	SHEET NO.	TOTAL SHEETS
IV	SCL.	2	C	(101)	

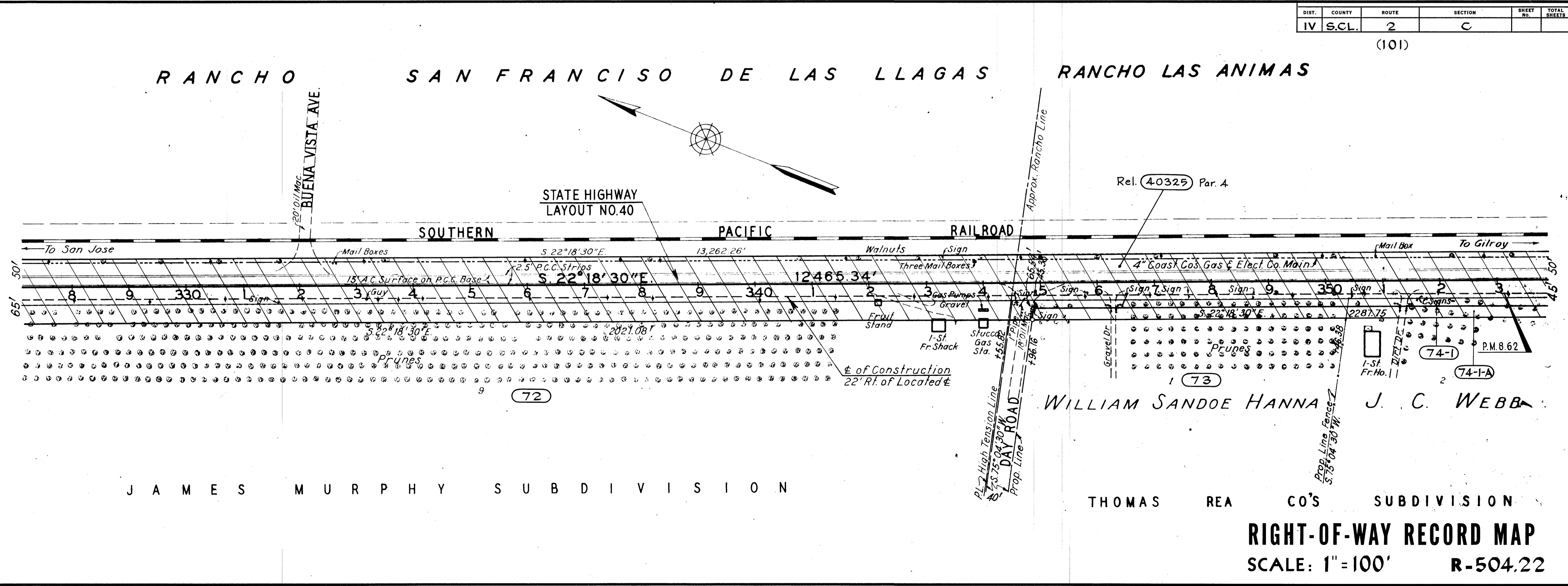
No.	Grantor	Area Acquired (A.C.±)		Type	Date	Recordation		Remarks
		Total	R/W			Book	Page	
68	George Authier et ux	0.506		F	12-3-40	1014	241	
68	Blanche Edith Orledge	0.106		F	6-3-41	999	421	
69-A	Ethel M. King	0.145		F	12-9-40	1011	501	
70	Peter Blaettler et ux	0.253		F	4-4-41	1030	355	
71	B. Samuels	1.879		F	10-4-40	1010	32	
72	B. Samuels	1.591		F	12-23-40	1012	330	
40325	State to the City of Gilroy			Rel.	6-3-75	443	299	Par. 4
40326	State to County of Santa Clara			Rel.	6-3-75	443	301	Par. 5



REVISIONS DATE  
 Added Rel. 40325 9-75  
 Conform to HF 3-91

DIST.	COUNTY	ROUTE	SECTION	SHEET NO.	TOTAL SHEETS
IV	SCL.	2	C	(101)	

No.	Grantor	Area Acquired (A.C.±)		Type	Date	Recordation		Remarks
		Total	R/W			Book	Page	
72	B. Samuels	1.591		F	12-23-40	1012	330	
73	William Sandoe Hanna et ux	0.410		F	3-23-41	1032	6	
74-1	J. C. Webb et ux	0.205		F	1-26-41	1017	596	
74-1A	J. C. Webb et ux	0.271		F				
40325	State to the City of Gilroy			Rel.	6-3-75	443	299	Par. 4



**RIGHT-OF-WAY RECORD MAP**  
 SCALE: 1"=100'  
 R-504.22

R504024